



CDA SERIES IE3 GENERAL PURPOSE MOTORS

CDA SERIES

IE3 GENERAL PURPOSE MOTORS

marathon[®]
Motors

The CDA series is a range of totally enclosed fan cooled cast iron construction motors built for general industry application. The simple design and robust construction of the motors make them suitable to meet the tough and demanding applications in various industries.

SPECIFICATIONS

| | |
|---------------|--|
| Output: | 0.75kW to 355kW |
| Pole: | 2 to 6 pole standard (others on request) |
| Frame: | IEC [®] * 80 - 280 standard (others on request) |
| Power supply: | 230VY/400VD up to 3kW; 400VY/690VD for >3kW (Special voltages 100V to 1100V, 50 or 60Hz on request) |
| Ambient: | -20°C to 40°C (Higher Temperature at request) |
| Construction: | Cast iron with integrally cast feet |
| Terminal box: | Cast iron with metric cable entry |
| Protection: | IP66 |
| Insulation: | Class F insulation & Class B temperature rise |
| Bearings: | Sealed bearings for IEC 80-132 |
| Fan: | Bi-directional fan |
| Mounting: | All standard mountings B3, B5, B35, (V1, V3, V5, V6 on request) (B14 and B34 for IEC 80-132) |

OPTIONAL ACCESSORIES

Winding temperature monitors and thermistors, Anti-condensation heaters, rain canopy for V1 mounting, Flying leads options, Air Stream rated, Alternative bearing types, Insulated Bearings, Forced Ventilation Kits, Tropic proofing, Oil seals for wet-face applications, special paints, special shafts.

APPLICATIONS

- Material handling
- Machine tools
- Fans
- Compressors
- Centrifugal roof units

CERTIFICATIONS (ON REQUEST)



* The following trademarks are not owned by, or under the control of Regal Beloit Corporation: CE is a trademark or tradename of European Unions; IEC is a trademark of International Electrotechnical Commission.



PERFORMANCE DATA

CDA SERIES THREE PHASE IP66 F CLASS INSULATION B CLASS TEMPERATURE RISE

| Type | Rated Output | | Efficiency[%] at % F.L. | | | | Power factor at % F.L. | | | | Current | | Torque | | | Weight (kg) |
|----------------------|--------------|------|----------------------------|------|------|------|---------------------------|------|------|------|-----------|-----------|------------|-----------|-----------|----------------|
| | kW | RPM | 125 | 100 | 75 | 50 | 125 | 100 | 75 | 50 | FL [A] | IL /IN | FL [Nm] | TL /TN | TB /TN | |
| 2 POLE MOTORS | | | | | | | | | | | | | | | | |
| CDA-80M1-2 | 0.75 | 2880 | 79.2 | 80.7 | 81.5 | 80.7 | 0.89 | 0.82 | 0.79 | 0.74 | 1.63 | 6.2 | 2.5 | 2.4 | 2.9 | 18 |
| CDA-80M2-2 | 1.1 | 2870 | 79.7 | 83.1 | 84.3 | 81.2 | 0.82 | 0.78 | 0.73 | 0.55 | 2.5 | 6.0 | 3.7 | 2.3 | 2.6 | 20 |
| CDA-90S-2 | 1.5 | 2885 | 82.2 | 84.3 | 85.6 | 86.0 | 0.86 | 0.83 | 0.79 | 0.72 | 3.1 | 7.4 | 5 | 2.7 | 2.9 | 24 |
| CDA-90L-2 | 2.2 | 2915 | 85.7 | 86.4 | 86.5 | 86.7 | 0.86 | 0.83 | 0.82 | 0.80 | 4.5 | 8.8 | 7.3 | 3.5 | 4.1 | 27 |
| CDA-100L-2 | 3 | 2880 | 86.8 | 87.4 | 87.4 | 85.8 | 0.88 | 0.86 | 0.82 | 0.72 | 5.8 | 7.5 | 9.9 | 2.6 | 3.3 | 35 |
| CDA-112M-2 | 4 | 2915 | 87.0 | 87.8 | 88.3 | 88.5 | 0.88 | 0.88 | 0.87 | 0.84 | 7.5 | 8.8 | 13.1 | 2.8 | 3.1 | 42 |
| CDA-132S1-2 | 5.5 | 2930 | 88.7 | 89.2 | 89.3 | 89.1 | 0.91 | 0.89 | 0.88 | 0.85 | 10 | 8.6 | 17.9 | 3.0 | 3.4 | 64 |
| CDA-132S2-2 | 7.5 | 2915 | 88.3 | 89.7 | 90.2 | 89.6 | 0.92 | 0.92 | 0.91 | 0.85 | 13.2 | 8.1 | 24 | 2.5 | 2.9 | 70 |
| CDA-160M1-2 | 11 | 2950 | 91.4 | 91.7 | 91.9 | 92.1 | 0.90 | 0.90 | 0.89 | 0.88 | 19.3 | 8.0 | 36 | 2.7 | 3.2 | 140 |
| CDA-160M2-2 | 15 | 2950 | 92.0 | 92.3 | 92.6 | 92.6 | 0.89 | 0.89 | 0.88 | 0.87 | 26.4 | 8.5 | 49 | 2.9 | 3.2 | 154 |
| CDA-160L2-2 | 18.5 | 2945 | 91.9 | 92.4 | 92.6 | 92.9 | 0.91 | 0.91 | 0.90 | 0.90 | 32 | 8.2 | 60 | 3.0 | 3.0 | 162 |
| CDA-180M-2 | 22 | 2960 | 93.5 | 93.6 | 93.6 | 93.5 | 0.91 | 0.90 | 0.89 | 0.88 | 37.7 | 9.8 | 71.2 | 3.4 | 4.1 | 198 |
| CDA-200L2-2 | 30 | 2965 | 93.3 | 93.3 | 93.3 | 93.3 | 0.87 | 0.86 | 0.85 | 0.83 | 53.9 | 8.1 | 96.6 | 2.8 | 3.5 | 260 |
| CDA-200L2-2 | 37 | 2960 | 93.4 | 93.9 | 94.1 | 93.3 | 0.91 | 0.92 | 0.91 | 0.85 | 62.2 | 7.9 | 119 | 2.6 | 3.3 | 280 |
| CDA-225SM-2 | 45 | 2970 | 94.6 | 94.7 | 94.8 | 94.9 | 0.90 | 0.90 | 0.89 | 0.88 | 76.3 | 9.1 | 145 | 2.8 | 3.6 | 330 |
| CDA-250SM-2 | 55 | 2975 | 94.2 | 94.3 | 94.4 | 94.4 | 0.90 | 0.89 | 0.88 | 0.87 | 94.4 | 9.2 | 177 | 2.6 | 3.4 | 390 |
| CDA-280SM-2 | 75 | 2985 | 94.7 | 94.8 | 94.8 | 94.7 | 0.88 | 0.88 | 0.87 | 0.86 | 130.1 | 8.3 | 240 | 2.7 | 3.4 | 498 |
| CDA-280SM-2 | 90 | 2980 | 95.0 | 95.1 | 95.1 | 95.1 | 0.89 | 0.89 | 0.88 | 0.87 | 154.4 | 8.4 | 289 | 3.2 | 3.5 | 680 |
| 4 POLE MOTORS | | | | | | | | | | | | | | | | |
| CDA-80M2-4 | 0.75 | 1450 | 82.9 | 83.0 | 81.8 | 77.7 | 0.75 | 0.68 | 0.59 | 0.46 | 1.9 | 5.5 | 5 | 2.3 | 2.7 | 18 |
| CDA-90S-4 | 1.1 | 1430 | 81.8 | 84.0 | 85.4 | 84.7 | 0.78 | 0.75 | 0.69 | 0.57 | 2.6 | 5.5 | 7.3 | 2.1 | 2.5 | 25 |
| CDA-90L-4 | 1.5 | 1445 | 83.1 | 85.3 | 86.3 | 84.4 | 0.79 | 0.75 | 0.69 | 0.54 | 3.4 | 6.8 | 10 | 2.3 | 2.8 | 27 |
| CDA-100L1-4 | 2.2 | 1455 | 86.4 | 87.1 | 87.0 | 85.1 | 0.88 | 0.80 | 0.73 | 0.61 | 4.6 | 7.9 | 14.5 | 3 | 3.5 | 34 |
| CDA-100L2-4 | 3 | 1460 | 86.0 | 87.6 | 88.2 | 87.7 | 0.83 | 0.78 | 0.71 | 0.62 | 6.4 | 6.6 | 19.9 | 2.4 | 2.5 | 39 |
| CDA-112M-4 | 4 | 1455 | 87.8 | 88.9 | 89.3 | 87.9 | 0.83 | 0.81 | 0.79 | 0.68 | 8.3 | 8.4 | 26.3 | 2.9 | 3.3 | 45 |
| CDA-132S-4 | 5.5 | 1460 | 87.6 | 89.1 | 89.9 | 89.3 | 0.86 | 0.85 | 0.80 | 0.68 | 10.6 | 7.9 | 35.9 | 2.4 | 2.8 | 70 |
| CDA-132M-4 | 7.5 | 1460 | 89.2 | 90.6 | 91.5 | 90.3 | 0.83 | 0.80 | 0.74 | 0.56 | 14.9 | 6.1 | 48.9 | 2.2 | 2.4 | 80 |
| CDA-160M-4 | 11 | 1470 | 91.0 | 91.3 | 91.4 | 91.5 | 0.84 | 0.83 | 0.81 | 0.79 | 21.1 | 7.9 | 71.5 | 2.1 | 2.9 | 130 |
| CDA-160L-4 | 15 | 1470 | 91.9 | 92.1 | 92.3 | 92.3 | 0.84 | 0.83 | 0.81 | 0.78 | 28.4 | 8.6 | 97.4 | 2.4 | 3 | 150 |
| CDA-180M-4 | 18.5 | 1465 | 91.5 | 92.4 | 92.8 | 91.3 | 0.86 | 0.84 | 0.78 | 0.61 | 34.4 | 6.6 | 120 | 2.5 | 2.6 | 190 |
| CDA-180L-4 | 22 | 1475 | 93.0 | 93.7 | 94.1 | 93.8 | 0.88 | 0.86 | 0.82 | 0.72 | 39.7 | 7.2 | 143 | 2.1 | 2.7 | 210 |
| CDA-200L-4 | 30 | 1475 | 93.9 | 94.4 | 94.7 | 94.2 | 0.87 | 0.85 | 0.82 | 0.72 | 53.8 | 7.8 | 194 | 2.8 | 2.9 | 280 |
| CDA-225SM-4 | 37 | 1480 | 93.6 | 94.2 | 94.5 | 94.0 | 0.86 | 0.84 | 0.80 | 0.71 | 67.8 | 6.9 | 239 | 2.3 | 3.4 | 320 |
| CDA-225SM-4 | 45 | 1475 | 93.6 | 94.3 | 94.8 | 94.6 | 0.87 | 0.85 | 0.82 | 0.74 | 80.5 | 7.5 | 290 | 2.5 | 2.7 | 350 |
| CDA-250SM-4 | 55 | 1485 | 95.2 | 95.6 | 95.8 | 95.8 | 0.85 | 0.83 | 0.82 | 0.79 | 100.4 | 8.2 | 354 | 2.9 | 3.1 | 450 |
| CDA-280SM-4 | 75 | 1485 | 95.8 | 96.1 | 96.4 | 96.6 | 0.87 | 0.87 | 0.86 | 0.85 | 130.1 | 7.4 | 481 | 2.4 | 3.1 | 590 |
| CDA280SM-4 | 90 | 1485 | 95.0 | 95.1 | 95.2 | 95.2 | 0.88 | 0.87 | 0.87 | 0.85 | 156.7 | 7.6 | 577 | 2.6 | 3.3 | 670 |

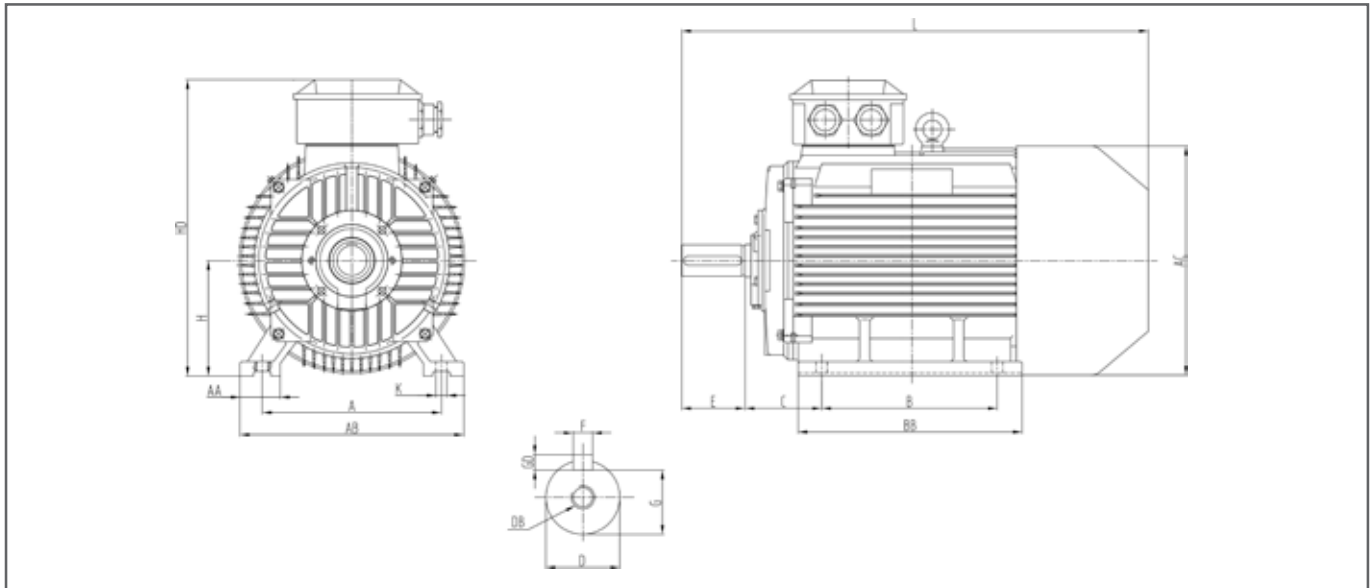
PERFORMANCE DATA

CDA SERIES THREE PHASE IP66 F CLASS INSULATION B CLASS TEMPERATURE RISE

| Type | Rated Output | | Efficiency[%] at % FL. | | | | Power factor at % FL. | | | | Current | | Torque | | | Weight (kg) |
|----------------------|--------------|-----|------------------------|------|------|------|-----------------------|------|------|------|---------|--------|---------|--------|--------|-------------|
| | kW | RPM | 125 | 100 | 75 | 50 | 125 | 100 | 75 | 50 | FL [A] | IL /IN | FL [Nm] | TL /TN | TB /TN | |
| 6 POLE MOTORS | | | | | | | | | | | | | | | | |
| CDA-90S-6 | 0.75 | 950 | 77.9 | 79.2 | 79.1 | 76.0 | 0.76 | 0.69 | 0.60 | 0.47 | 1.97 | 4.7 | 7.6 | 1.8 | 2.1 | 26 |
| CDA-90L-6 | 1.1 | 950 | 79.4 | 82.1 | 82.3 | 80.1 | 0.72 | 0.72 | 0.62 | 0.49 | 2.7 | 5.7 | 11.1 | 2.6 | 2.9 | 28 |
| CDA-100L-6 | 1.5 | 950 | 81.0 | 83.5 | 85.2 | 84.2 | 0.75 | 0.72 | 0.67 | 0.55 | 3.6 | 5.2 | 15.1 | 2.3 | 2.4 | 36 |
| CDA-112M-6 | 2.2 | 975 | 84.3 | 85.5 | 85.8 | 84.2 | 0.77 | 0.72 | 0.63 | 0.50 | 5.2 | 7.2 | 21.8 | 2.4 | 3 | 42 |
| CDA-132S-6 | 3 | 975 | 85.1 | 86.0 | 85.9 | 83.8 | 0.78 | 0.73 | 0.64 | 0.51 | 7 | 7.2 | 29.4 | 2.3 | 2.7 | 60 |
| CDA-132M1-6 | 4 | 975 | 85.3 | 87.1 | 86.8 | 84.5 | 0.73 | 0.74 | 0.64 | 0.50 | 9 | 4.9 | 39.2 | 2.4 | 2.7 | 72 |
| CDA-132M2-6 | 5.5 | 975 | 86.2 | 87.6 | 88.3 | 87.6 | 0.81 | 0.77 | 0.71 | 0.59 | 11.8 | 7.6 | 53.9 | 2.4 | 2.7 | 79 |
| CDA-160M-6 | 7.5 | 980 | 87.7 | 89.1 | 89.0 | 87.0 | 0.78 | 0.77 | 0.71 | 0.58 | 15.7 | 6.5 | 73.1 | 2.2 | 2.6 | 125 |
| CDA-160L-6 | 11 | 980 | 87.6 | 89.5 | 90.4 | 89.3 | 0.84 | 0.83 | 0.79 | 0.63 | 21.3 | 5.9 | 107 | 2.3 | 2.4 | 155 |
| CDA-180L-6 | 15 | 980 | 90.4 | 91.4 | 91.8 | 91.2 | 0.84 | 0.82 | 0.77 | 0.66 | 28.9 | 8.0 | 146 | 2.2 | 2.5 | 185 |
| CDA-200L1-6 | 18.5 | 980 | 90.3 | 91.3 | 91.7 | 91.1 | 0.84 | 0.83 | 0.78 | 0.69 | 35.5 | 6.6 | 179 | 2.1 | 2.6 | 240 |
| CDA-200L2-6 | 22 | 985 | 90.9 | 92.3 | 92.6 | 91.7 | 0.82 | 0.81 | 0.76 | 0.64 | 42.5 | 6.8 | 213 | 2.4 | 2.7 | 250 |
| CDA-225SM-6 | 30 | 985 | 92.0 | 93.1 | 93.8 | 93.2 | 0.87 | 0.83 | 0.84 | 0.76 | 56.2 | 6.0 | 291 | 2.3 | 2.5 | 300 |
| CDA-250SM-6 | 37 | 985 | 93.5 | 93.6 | 93.8 | 93.7 | 0.84 | 0.83 | 0.81 | 0.79 | 69.1 | 7.8 | 359 | 2.4 | 3.3 | 384 |
| CDA-280SM-6 | 45 | 990 | 93.4 | 93.6 | 93.7 | 93.7 | 0.85 | 0.84 | 0.83 | 0.81 | 82.6 | 7.4 | 434 | 2.3 | 3 | 419 |
| CDA-280SM-6 | 55 | 990 | 94.0 | 94.1 | 94.2 | 94.2 | 0.85 | 0.84 | 0.83 | 0.81 | 100.6 | 8.1 | 531 | 2.5 | 3.3 | 600 |

DIMENSIONS

CDA SERIES THREE PHASE IP66 F CLASS INSULATION B CLASS TEMPERATURE RISE

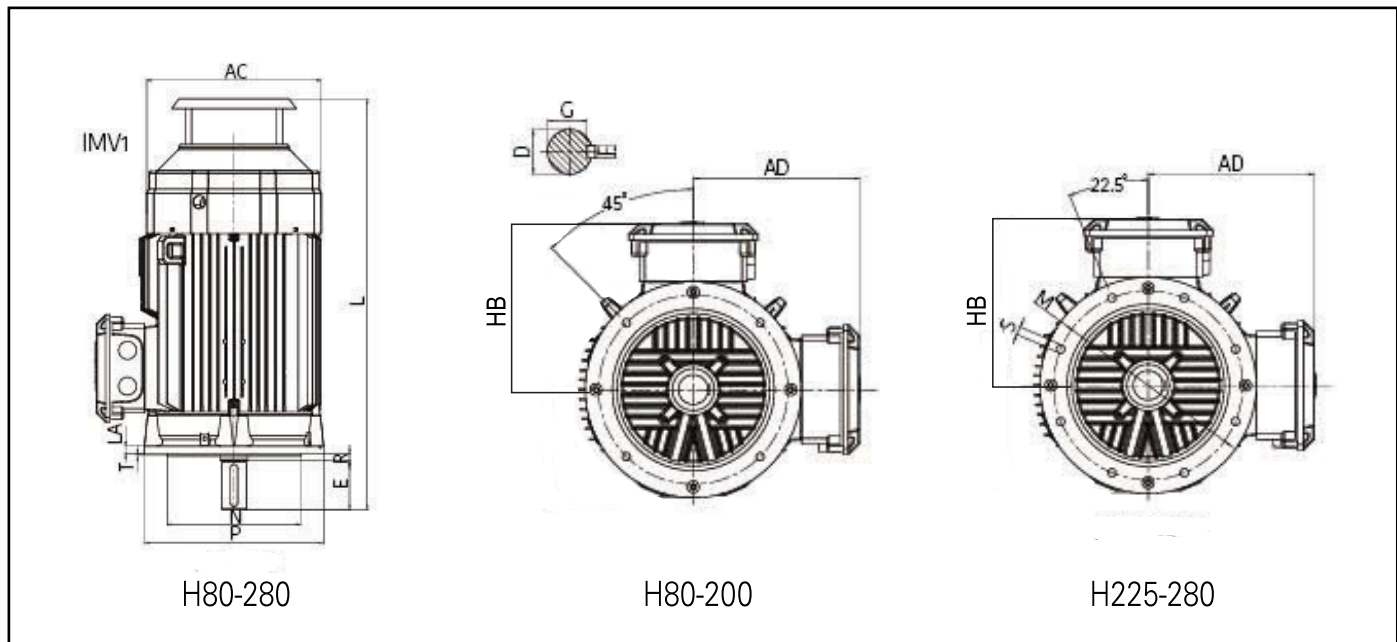


FOOT MOUNTING DIMENSIONS FOR INSTALLATION B3

| Type | Foot Mounting Dimensions (mm) | | | | | | | | | | | | | | | | | | |
|-------|-------------------------------|----|-----|-----|-----|-----|-----|-----|----|-----|-----|----|------|----|-----|----|-----|--------|------|
| | A | AA | AB | AC | B | B2 | BB | C | D | DB | E | F | G | GD | H | HA | HD | K | L |
| 80 | 125 | 34 | 160 | 175 | 100 | - | 130 | 50 | 19 | M6 | 40 | 6 | 15.5 | 6 | 80 | 10 | 230 | 4x10 | 290 |
| 90S | 140 | 36 | 180 | 195 | 100 | - | 140 | 56 | 24 | M8 | 50 | 8 | 20 | 7 | 90 | 12 | 245 | 4x10 | 320 |
| 90L | 140 | 36 | 180 | 195 | 125 | - | 165 | 56 | 24 | M8 | 50 | 8 | 20 | 7 | 90 | 12 | 245 | 4x10 | 345 |
| 100L | 160 | 40 | 200 | 215 | 140 | - | 176 | 63 | 28 | M10 | 60 | 8 | 24 | 7 | 100 | 14 | 270 | 4x12 | 380 |
| 112M | 190 | 45 | 226 | 240 | 140 | - | 180 | 70 | 28 | M10 | 60 | 8 | 24 | 7 | 112 | 15 | 300 | 4x12 | 400 |
| 132M | 216 | 55 | 262 | 275 | 178 | - | 224 | 89 | 38 | M12 | 80 | 10 | 33 | 8 | 132 | 18 | 345 | 4x12 | 505 |
| 132S | 216 | 55 | 262 | 275 | 140 | - | 186 | 89 | 38 | M12 | 80 | 10 | 33 | 8 | 132 | 18 | 345 | 4x12 | 470 |
| 160M | 254 | 65 | 314 | 330 | 210 | - | 260 | 108 | 42 | M16 | 110 | 12 | 37 | 8 | 160 | 20 | 430 | 4x14.5 | 615 |
| 160L | 254 | 65 | 314 | 330 | 254 | - | 304 | 108 | 42 | M16 | 110 | 12 | 37 | 8 | 160 | 20 | 430 | 4x14.5 | 660 |
| 180M | 279 | 70 | 349 | 380 | 241 | - | 311 | 121 | 48 | M16 | 110 | 14 | 42.5 | 9 | 180 | 22 | 465 | 4x14.5 | 695 |
| 180L | 279 | 70 | 349 | 380 | 279 | - | 349 | 121 | 48 | M16 | 110 | 14 | 42.5 | 9 | 180 | 22 | 465 | 4x14.5 | 730 |
| 200L | 318 | 70 | 388 | 420 | 305 | - | 369 | 133 | 55 | M20 | 110 | 16 | 49 | 10 | 200 | 25 | 520 | 4x18.5 | 780 |
| 225SM | 356 | 75 | 431 | 470 | 286 | 311 | 393 | 149 | 55 | M20 | 110 | 16 | 49 | 10 | 225 | 28 | 570 | 4x18.5 | 810 |
| 225SM | 356 | 75 | 431 | 470 | 286 | 311 | 393 | 149 | 60 | M20 | 140 | 18 | 53 | 11 | 225 | 28 | 570 | 4x18.5 | 840 |
| 250SM | 406 | 80 | 484 | 510 | 311 | 349 | 445 | 168 | 60 | M20 | 140 | 18 | 53 | 11 | 250 | 30 | 635 | 6x24 | 915 |
| 250SM | 406 | 80 | 484 | 510 | 311 | 349 | 445 | 168 | 65 | M20 | 140 | 18 | 58 | 11 | 250 | 30 | 635 | 6x24 | 915 |
| 280SM | 457 | 85 | 542 | 580 | 368 | 419 | 536 | 190 | 65 | M20 | 140 | 18 | 58 | 11 | 280 | 35 | 695 | 6x24 | 1010 |
| 280SM | 457 | 85 | 542 | 580 | 368 | 419 | 536 | 190 | 75 | M20 | 140 | 20 | 67.5 | 12 | 280 | 35 | 695 | 6x24 | 1030 |

DIMENSIONS

CDA SERIES THREE PHASE IP66 F CLASS INSULATION B CLASS TEMPERATURE RISE

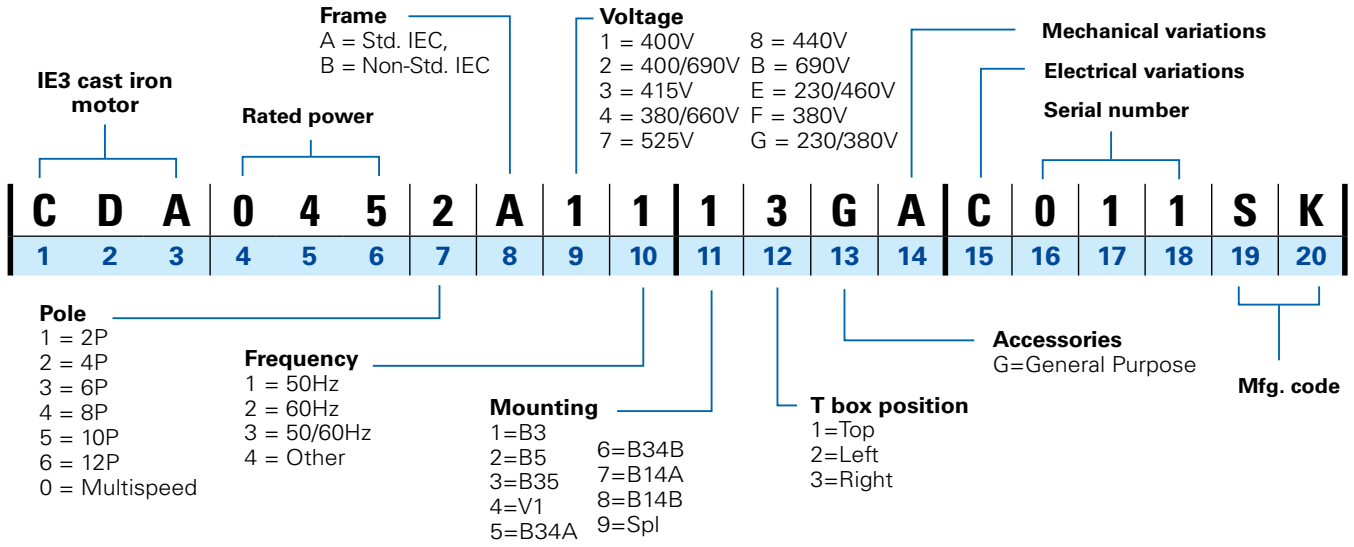


FLANGE MOUNTING DIMENSIONS FOR INSTALLATION B5

| Type | Flange Mounting Dimensions (mm) | | | | | | |
|-------|---------------------------------|-----|-----|----|-----|-----|--------|
| | HB | M | P | LA | N | T | S |
| 80 | 150 | 165 | 200 | 12 | 130 | 3.5 | 4x12 |
| 90S | 155 | 165 | 200 | 12 | 130 | 3.5 | 4x12 |
| 90L | 155 | 165 | 200 | 12 | 130 | 3.5 | 4x12 |
| 100L | 170 | 215 | 250 | 13 | 180 | 4 | 4x14.5 |
| 112M | 188 | 215 | 250 | 14 | 180 | 4 | 4x14.5 |
| 132M | 213 | 265 | 300 | 14 | 230 | 4 | 4x14.5 |
| 132S | 213 | 265 | 300 | 14 | 230 | 4 | 4x14.5 |
| 160M | 270 | 300 | 350 | 16 | 250 | 5 | 4x18.5 |
| 160L | 270 | 300 | 350 | 16 | 250 | 5 | 4x18.5 |
| 180M | 285 | 300 | 350 | 15 | 250 | 5 | 4x18.5 |
| 180L | 285 | 300 | 350 | 15 | 250 | 5 | 4x18.5 |
| 200L | 320 | 350 | 400 | 17 | 300 | 5 | 4x18.5 |
| 225SM | 345 | 400 | 450 | 20 | 350 | 5 | 8x18.5 |
| 225SM | 345 | 400 | 450 | 20 | 350 | 5 | 8x18.5 |
| 250SM | 385 | 500 | 550 | 22 | 450 | 5 | 8x18.5 |
| 250SM | 385 | 500 | 550 | 22 | 450 | 5 | 8x18.5 |
| 280SM | 415 | 500 | 550 | 22 | 450 | 5 | 8x18.5 |
| 280SM | 415 | 500 | 550 | 22 | 450 | 5 | 8x18.5 |

PART NUMBER LOGIC

Marathon® CDA Series standard product configuration confirms to IEC frame, product code specified as per below.



For additional details, please contact our technical support team.

NOTES:



HEAD OFFICE - AUSTRALIA

Regal Beloit Australia Pty Ltd ABN 61 122 303 084
19 Corporate Ave (PO Box 2340)
Rowville VIC 3178, Australia
Customer Service: 1300 888 853
Fax: +61 3 9237 4050
www.regalaustralia.com.au

STATE OFFICES

VICTORIA

19 Corporate Avenue
Rowville VIC 3178
T: 1300 888 853
F: +61 3 9237 4050

NEW SOUTH WALES

8 Bushells Place
Wetherill Park NSW 2164
T: 1300 888 853
F: +61 2 8781 3131

QUEENSLAND

7 Mahogany Court
Willawong QLD 4110
T: 1300 888 853
F: +61 7 3246 3210

PRESENT IN

MACKAY

SOUTH AUSTRALIA

WESTERN AUSTRALIA

T: 1300 888 853

NEW ZEALAND

Regal Beloit New Zealand Limited
18 Jomac Place Avondale
Auckland, New Zealand
T: 0800 676 722
F: +64 9 820 8504

PRESENT IN

CHRISTCHURCH

ROTORUA

T: 0800 676 722

APPLICATION CONSIDERATIONS

The proper selection and application of motors and components, including the related area of product safety, is the responsibility of the customer. Operating and performance requirements and potential associated issues will vary appreciably depending upon the use and application of such products and components. The scope of the technical and application information included in this publication is necessarily limited. Unusual operating environments and conditions, lubrication requirements, loading supports, and other factors can materially affect the application and operating results of the products and components and the customer should carefully review its requirements. Any technical advice or review furnished by Regal Beloit Australia Pty Ltd and its affiliates with respect to the use of products and components is given in good faith and without charge, and Regal assumes no obligation or liability for the advice given, or results obtained, all such advice and review being given and accepted at customer's risk.

For a copy of our Standard Terms and Conditions of Sale, please visit <http://www.regalbeloit.com> (please see link at bottom of page to "Standard Terms and Conditions of Sale"). These terms and conditions of sale, disclaimers and limitations of liability apply to any person who may buy, acquire or use a Regal product referred to herein, including any person who buys from a licensed distributor of these branded products.

The following trademarks are not owned by, or under the control of Regal Beloit Corporation: CE is a trademark or tradename of European Unions; IEC is a trademark of International Electrotechnical Commission.

Regal and Marathon are trademarks of Regal Beloit Corporation or one of its affiliated companies.
©2019, 2020, 2021 Regal Beloit Corporation. All Rights Reserved. MCB20004E • Form# SB0218E

The Regal logo, consisting of the word "REGAL" in a bold, uppercase, sans-serif font. The text is white and is set against a dark grey, trapezoidal background that tapers to the right. A registered trademark symbol (®) is located to the upper right of the logo.