



# TWIN BELT DRIVE BLOWERS

BPC SERIES

**REGAL**®

# BELT DRIVE BLOWER, DOUBLE INLET FORWARD CURVE CENTRIFUGAL BLOWERS, TWIN BELT DRIVE

---

<b>INTRODUCTION</b>	<b>3</b>
---------------------	----------

---

<b>PART NUMBER IDENTIFICATION</b>	<b>3</b>
-----------------------------------	----------

---

<b>DOUBLE BELT DRIVE</b>	<b>4 - 21</b>
9" x 7"	4 - 5
9" x 9"	6 - 7
10" x 8"	8 - 9
10" x 10"	10 - 11
12" x 9"	12 - 13
12" x 12"	14 - 15
15" x 11"	16 - 17
15" x 15"	18 - 19
18" x 19"	20 - 21

---

# INTRODUCTION

## DESCRIPTION

The BPC range of forward curved double width double inlet twin blowers from Regal are manufactured with wheel diameters from 241mm (9 inch) to 457mm (18 inch) and can deliver air volumes of up to 16000L/S.

Housings and wheels are manufactured from galvanised steel, wheels are forward curve design with inserted blades, hubs are available with 1 inch or 25mm bores.

## ACCESSORIES

Housing support brackets are available separately for each blower size.

## APPLICATIONS

Air handling units, fan coil units, evaporative condensers, cooling towers, air conditioning units, general ventilation.

## PART NUMBER IDENTIFICATION

When placing an order the blower product code should be specified.

This product code is composed in accordance with the following example:

<b>B</b>	<b>P</b>	<b>C</b>	<b>3</b>	<b>8</b>	<b>1</b>	-	<b>3</b>	<b>8</b>	<b>1</b>	-	<b>7</b>	<b>5</b>	<b>A</b>
1	2	3	4 - 6		7		8 - 10		11		12 - 14		

### POSITION 1

Type of drive

**B** = Belt

### POSITION 2

Configuration

**P** = Pair of housings

### POSITION 3

Wheel type

**C** = Inserted blade (CR) type

### POSITION 4 TO 6

Wheel diameter

In millimeters

### POSITION 7

Dash

### POSITION 8 TO 10

Wheel width

In millimeters

### POSITION 11

Dash

### POSITIONS 12 TO 14

Shaft configuration

**75A** = ø25mm Standard (a/c)

**75C** = ø25mm Standard (c/w)

Code examples:

BPC381-381-75A

BPC381-381-75C



# TWIN BELT DRIVE, 9" X 7" STANDARD DUTY

## BPC241-181-XXX

### APPLICATIONS

- Air handling units
- Fan coil units
- Evaporative condensers
- Cooling towers
- Air conditioning units
- General ventilation

### HOUSING

- Galvanised steel

### WHEEL

- Galvanised steel

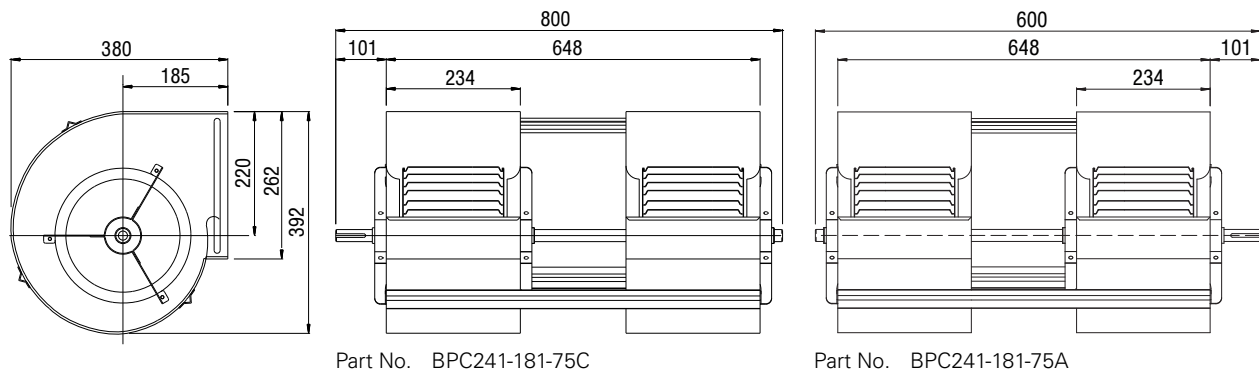
### WEIGHT

- 14.0 kg

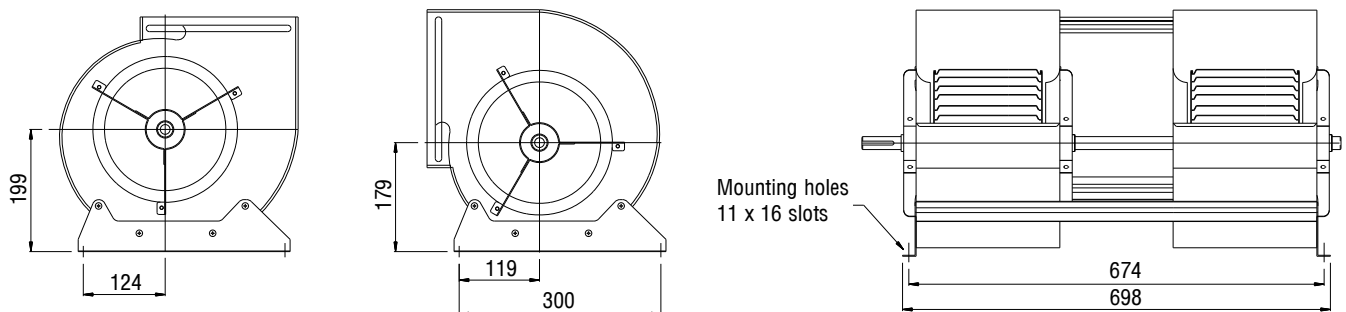
### SHAFT

- Bright mild steel

### DIMENSIONS



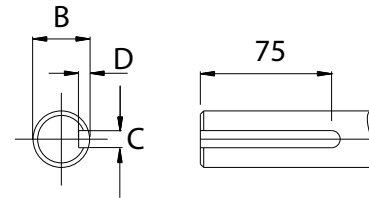
### DISCHARGE POSITIONS



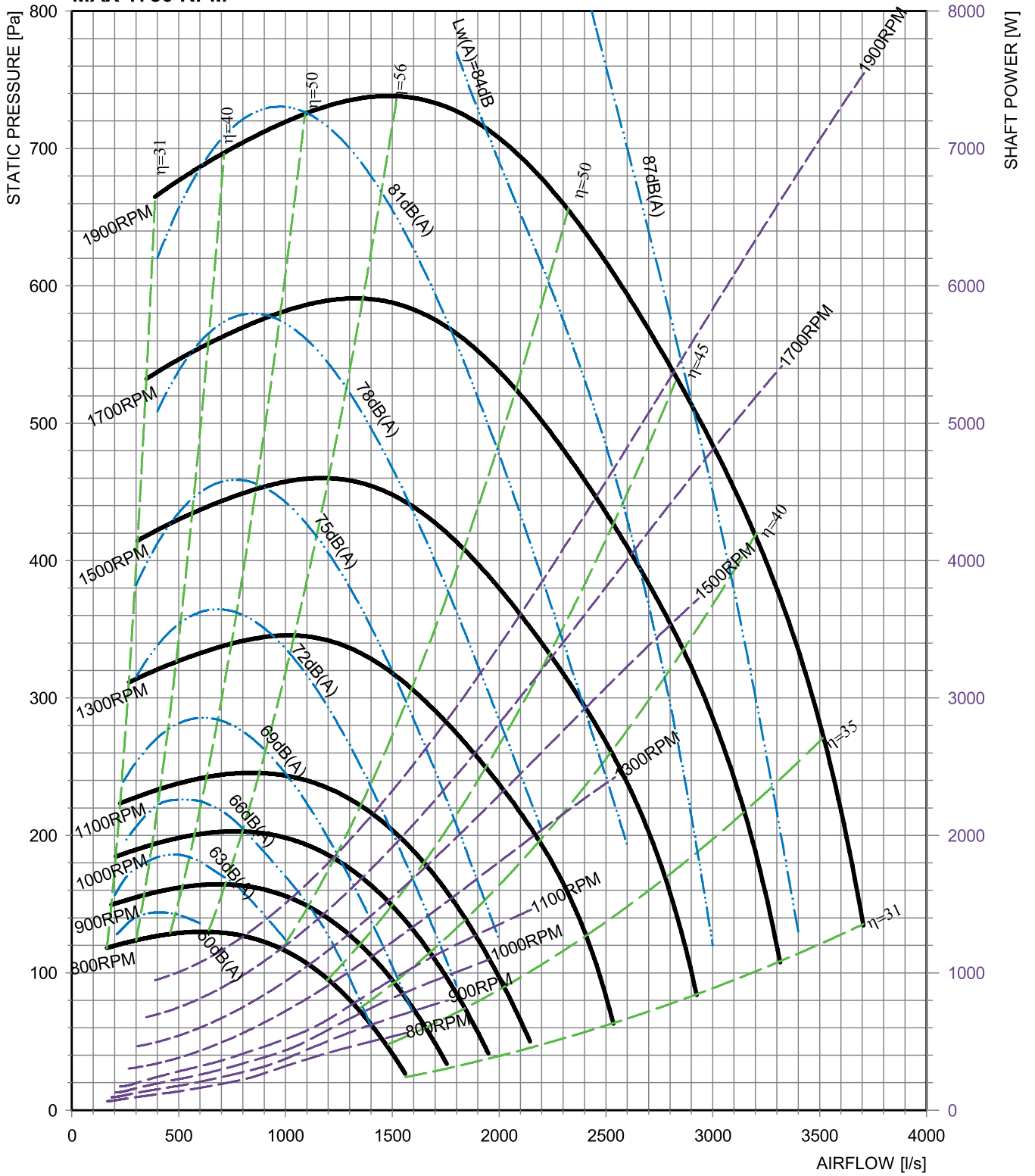
### SHAFT DETAIL

	B	C	D
BPC241-181-75C / 75A [mm]	ø25.00	8.00	4.20
	ø24.96	7.96	4.00

Note: Shaft - ø25.0mm uses 8mm x 7mm keyway



**DUCTED DISCHARGE**  
**MAX 1750 RPM**



# TWIN BELT DRIVE, 9" X 9" STANDARD DUTY

## BPC241-241-XXX

### APPLICATIONS

- Air handling units
- Fan coil units
- Evaporative condensers
- Cooling towers
- Air conditioning units
- General ventilation

### HOUSING

- Galvanised steel

### WHEEL

- Galvanised steel

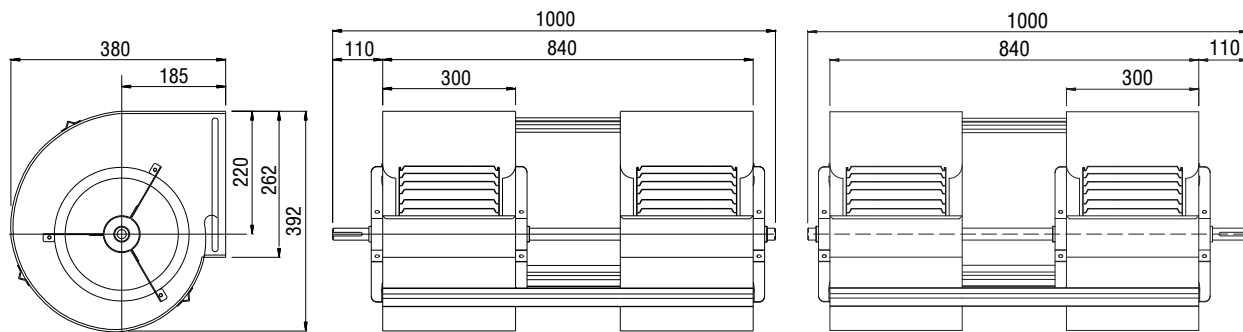
### WEIGHT

- 15.5 kg

### SHAFT

- Bright mild steel

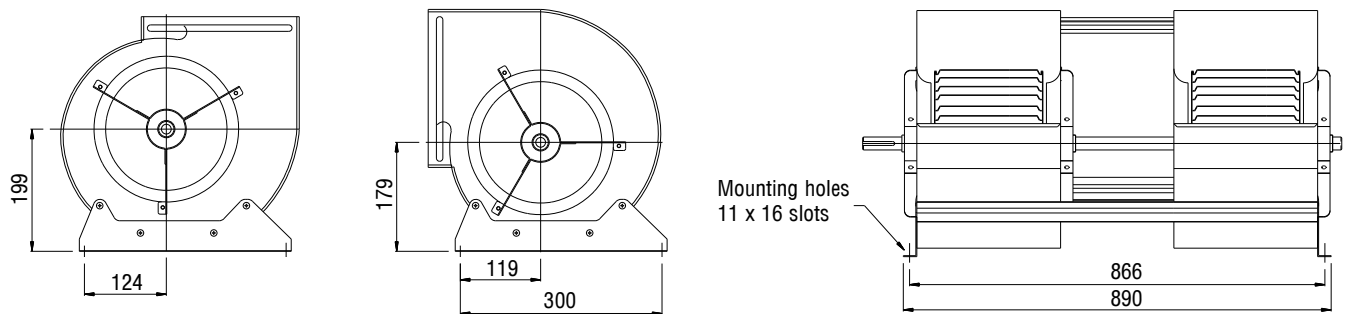
### DIMENSIONS



Part No. BPC241-241-75C

Part No. BPC241-241-75A

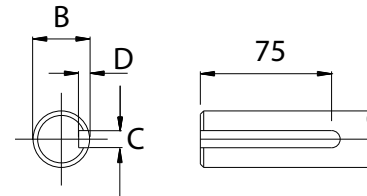
### DISCHARGE POSITIONS



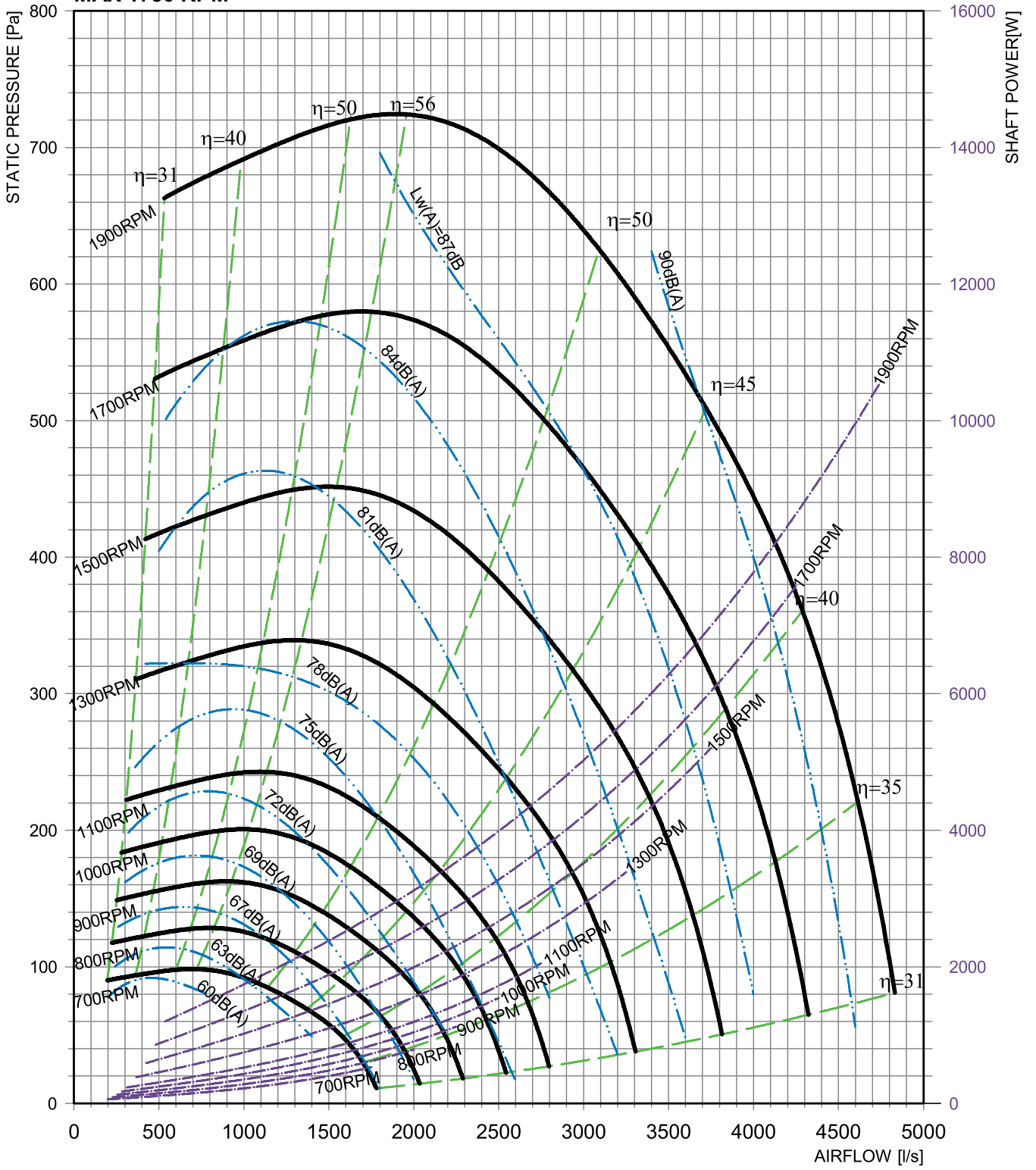
### SHAFT DETAIL

	B	C	D
BPC241-241-75C / 75A [mm]	ø25.00	8.00	4.20
	ø24.96	7.96	4.00

Note: Shaft - ø25.0mm uses 8mm x 7mm keyway



**DUCTED DISCHARGE**  
**MAX 1750 RPM**



# TWIN BELT DRIVE, 10" X 8" STANDARD DUTY

## BPC270-203-XXX

### APPLICATIONS

- Air handling units
- Fan coil units
- Evaporative condensers
- Cooling towers
- Air conditioning units
- General ventilation

### HOUSING

- Galvanised steel

### WHEEL

- Galvanised steel

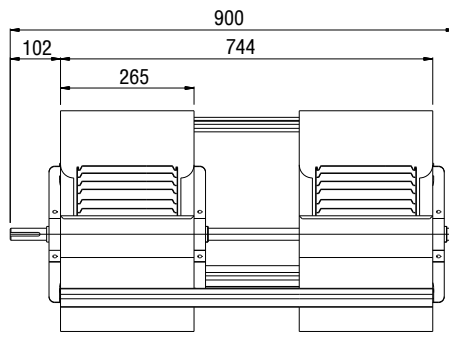
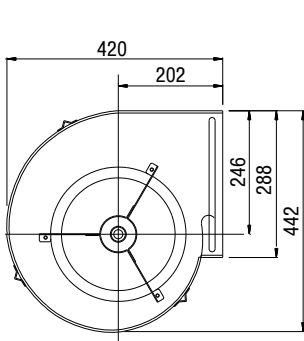
### WEIGHT

- 18.0 kg

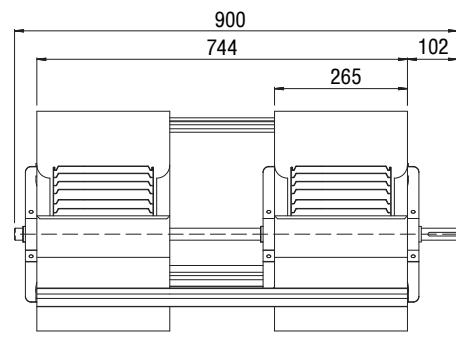
### SHAFT

- Bright mild steel

### DIMENSIONS

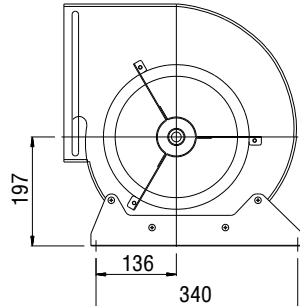
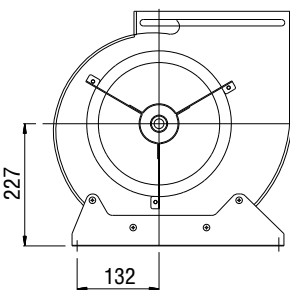


Part No. BPC270-203-75C

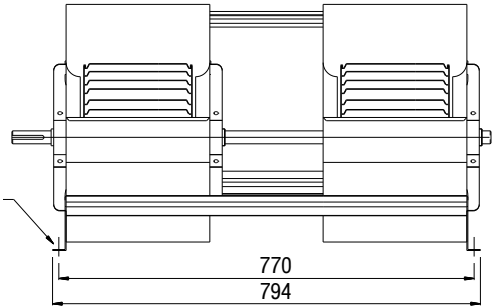


Part No. BPC270-203-75A

### DISCHARGE POSITIONS



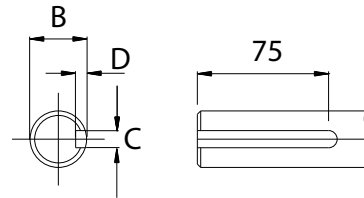
Mounting holes  
11 x 16 slots



### SHAFT DETAIL

	B	C	D
BPC270-203-75C / 75A [mm]	ø25.00	8.00	4.20
	ø24.96	7.96	4.00

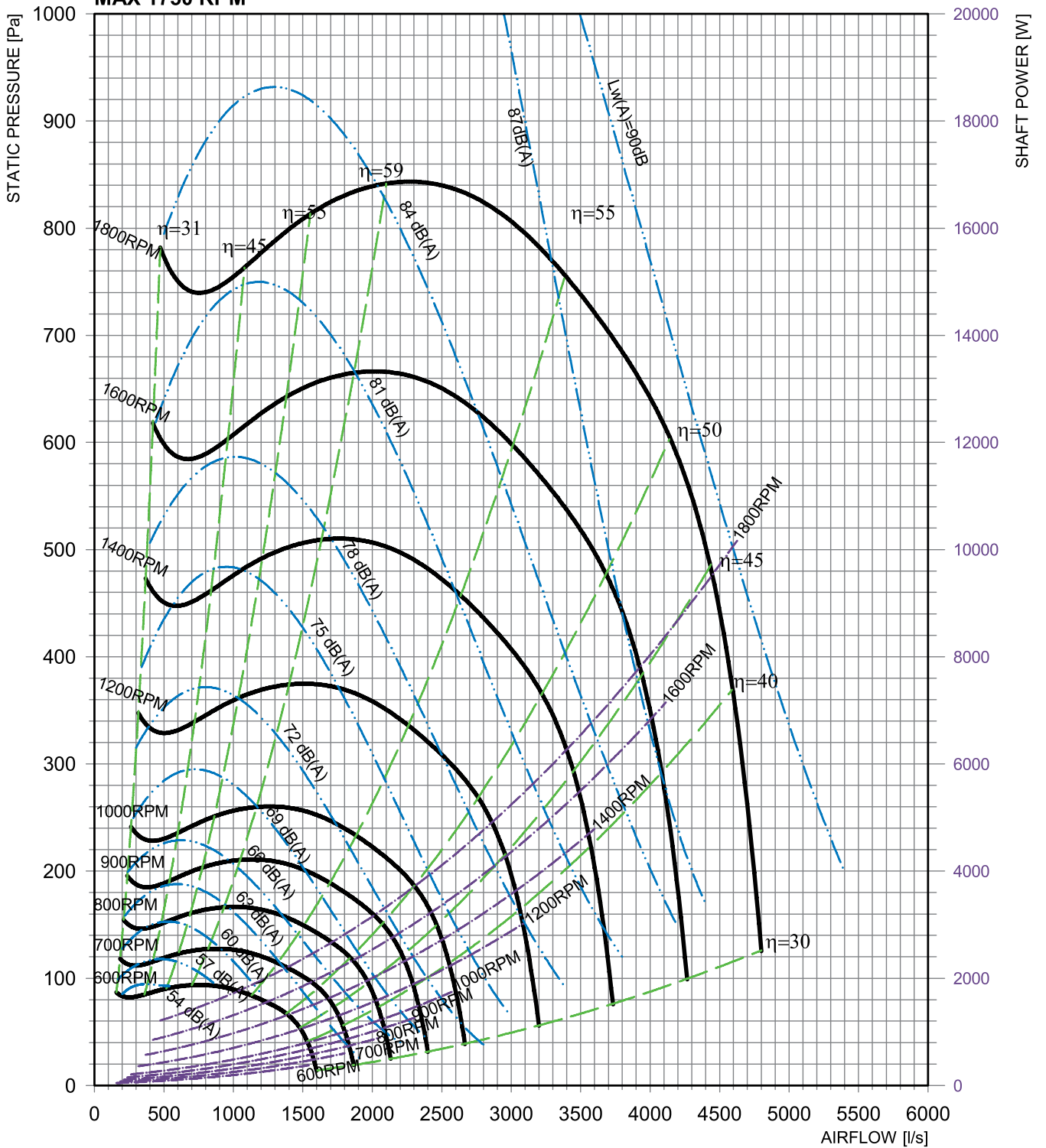
Note: Shaft - ø25.0mm uses 8mm x 7mm keyway





# DUCTED DISCHARGE

## MAX 1750 RPM



# TWIN BELT DRIVE, 10" X 10" STANDARD DUTY

## BPC270-270-XXX

### APPLICATIONS

- Air handling units
- Fan coil units
- Evaporative condensers
- Cooling towers
- Air conditioning units
- General ventilation

### HOUSING

- Galvanised steel

### WHEEL

- Galvanised steel

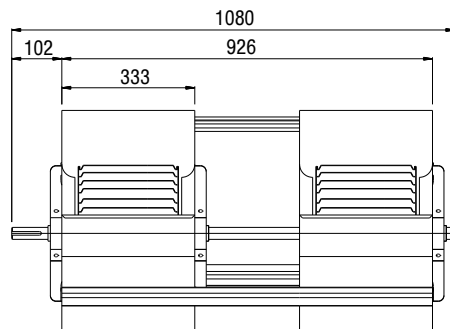
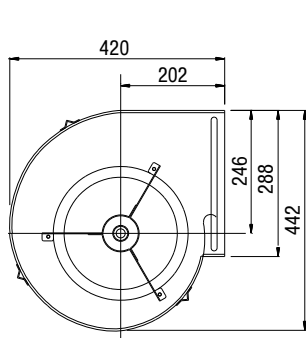
### WEIGHT

- 20.0 kg

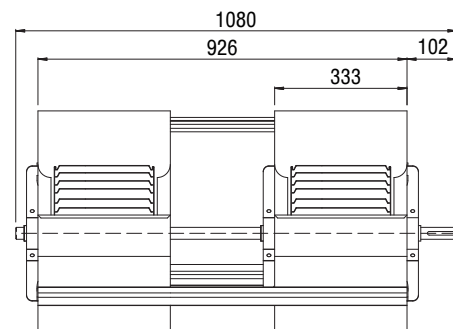
### SHAFT

- Bright mild steel

### DIMENSIONS

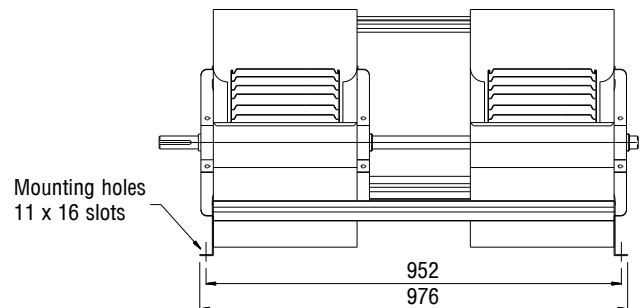
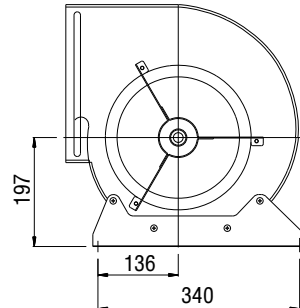
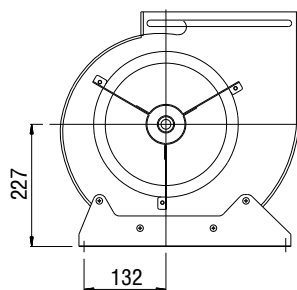


Part No. BPC270-270-75C



Part No. BPC270-270-75A

### DISCHARGE POSITIONS

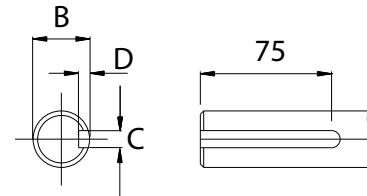


Mounting holes  
11 x 16 slots

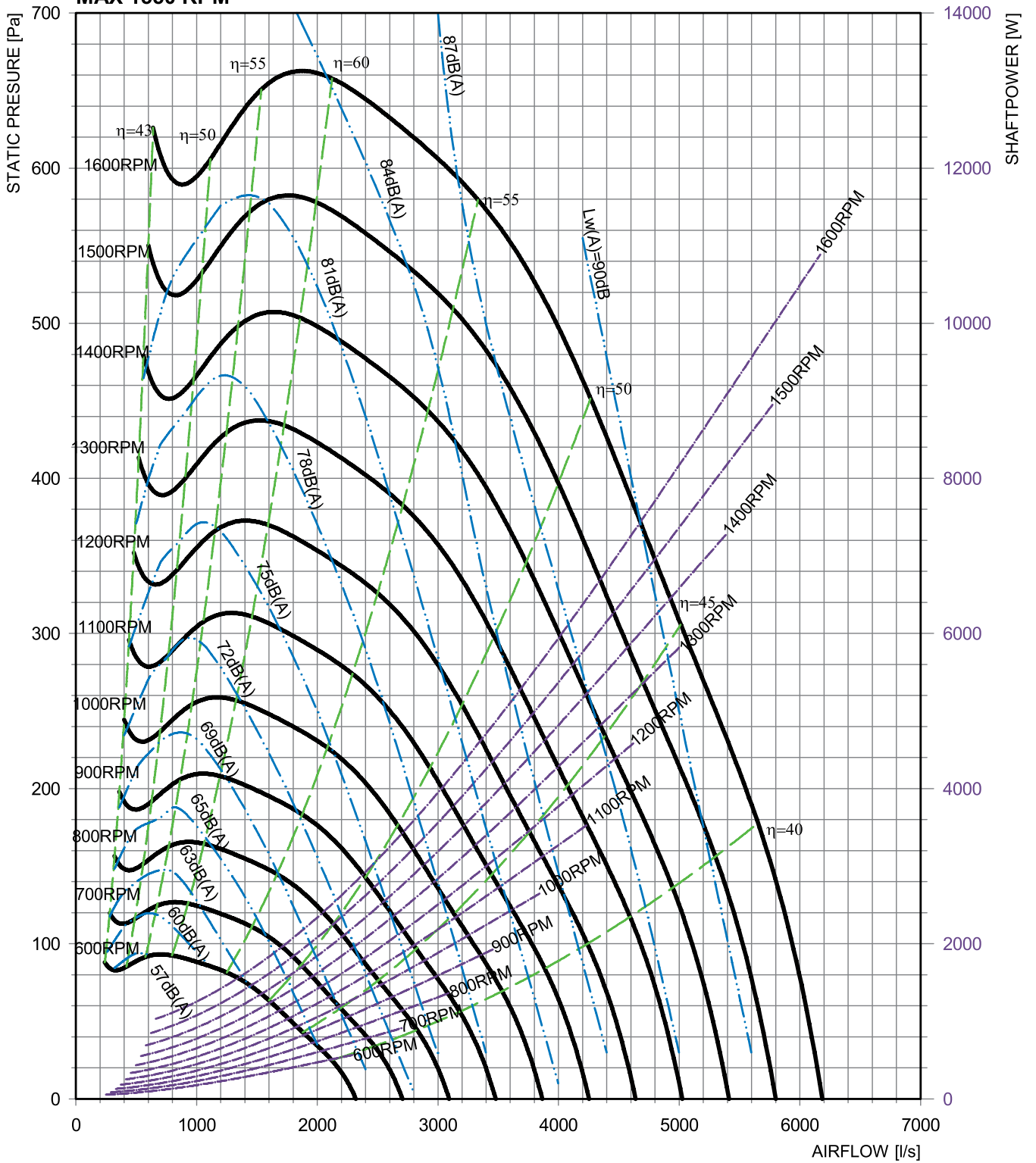
### SHAFT DETAIL

	B	C	D
BPC270-270-75C / 75A [mm]	ø25.00	8.00	4.20
	ø24.96	7.96	4.00

Note: Shaft - ø25.0mm uses 8mm x 7mm keyway



**DUCTED DISCHARGE  
MAX 1550 RPM**



# TWIN BELT DRIVE, 12" X 9" STANDARD DUTY

## BPC321-241-XXX

### APPLICATIONS

- Air handling units
- Fan coil units
- Evaporative condensers
- Cooling towers
- Air conditioning units
- General ventilation

### HOUSING

- Galvanised steel

### WHEEL

- Galvanised steel

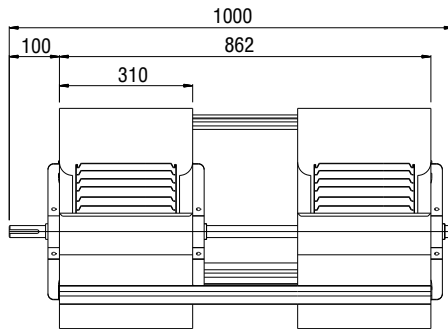
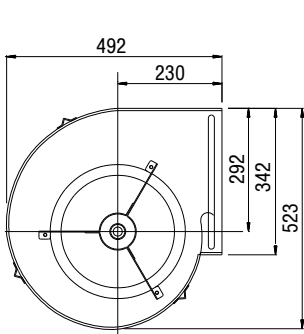
### WEIGHT

- 25.0 kg

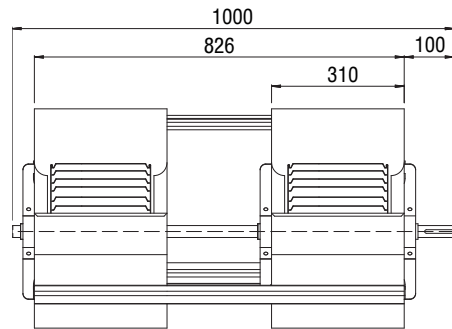
### SHAFT

- Bright mild steel

### DIMENSIONS

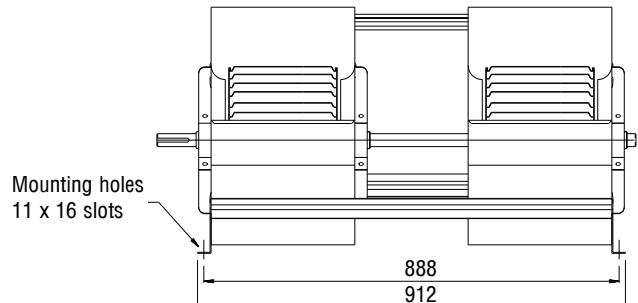
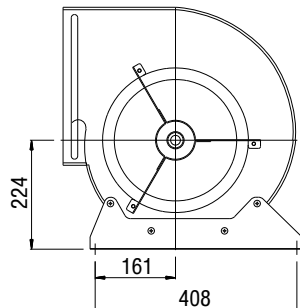
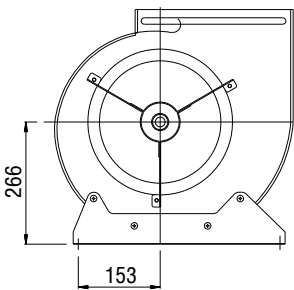


Part No. BPC321-241-75C



Part No. BPC321-241-75A

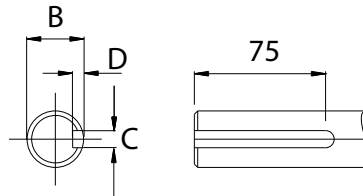
### DISCHARGE POSITIONS



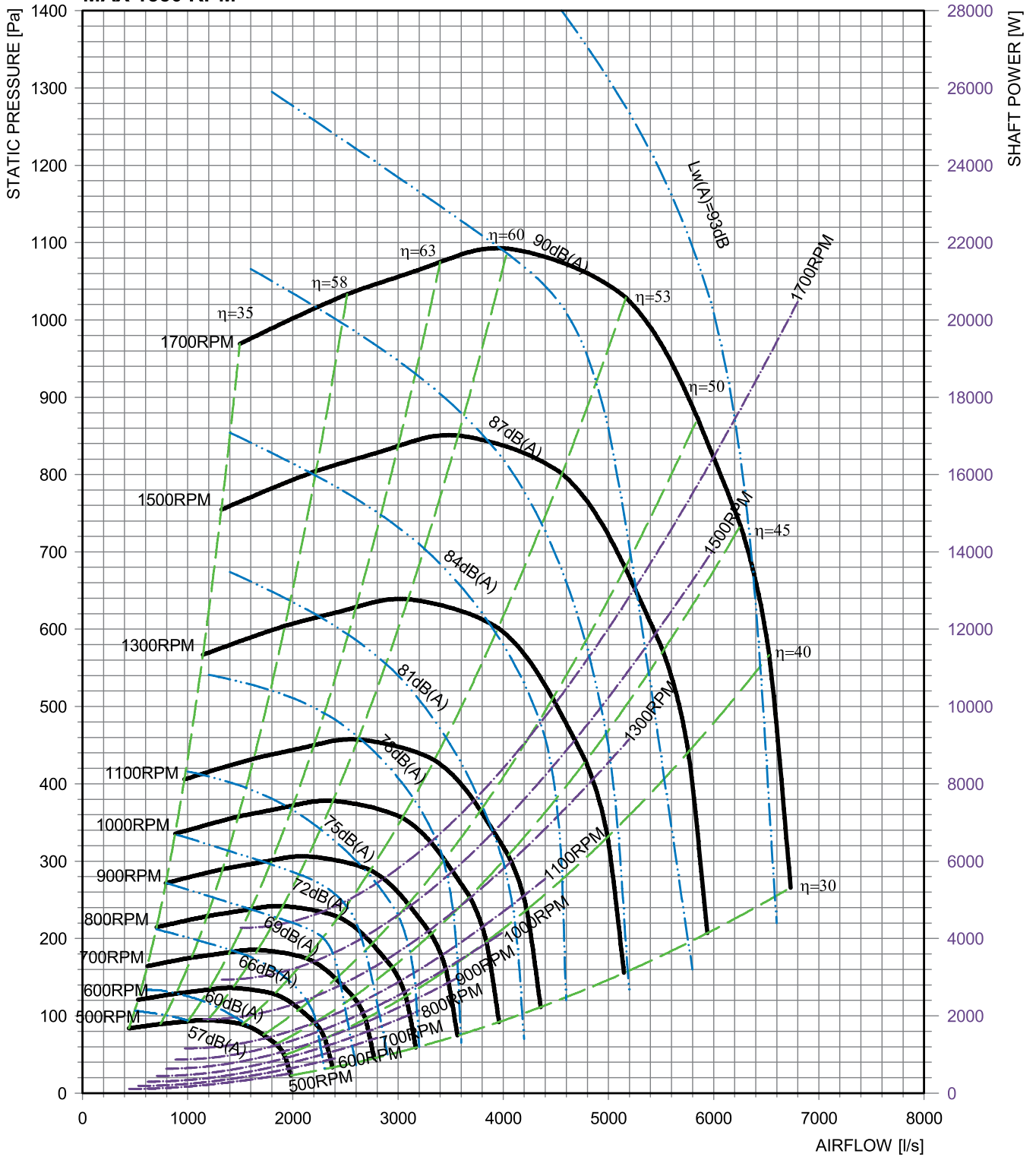
### SHAFT DETAIL

	B	C	D
BPC321-241-75C / 75A [mm]	ø25.00	8.00	4.20
	ø24.96	7.96	4.00

Note: Shaft - ø25.0mm uses 8mm x 7mm keyway



**DUCTED DISCHARGE  
MAX 1550 RPM**



# TWIN BELT DRIVE, 12" X 12" STANDARD DUTY

## BPC321-321-XXX

### APPLICATIONS

- Air handling units
- Fan coil units
- Evaporative condensers
- Cooling towers
- Air conditioning units
- General ventilation

### HOUSING

- Galvanised steel

### WHEEL

- Galvanised steel

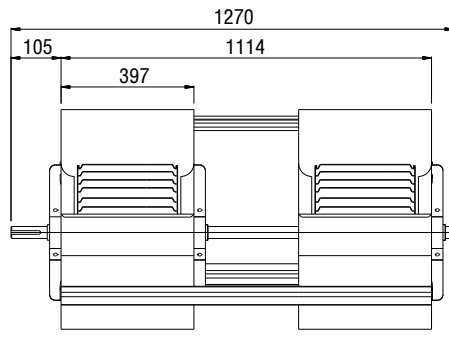
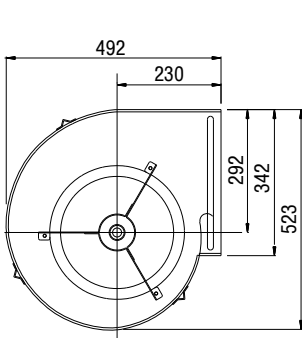
### WEIGHT

- 28.0 kg

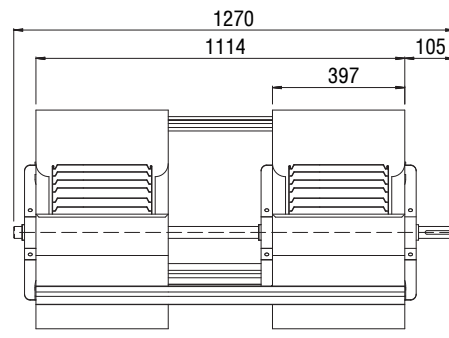
### SHAFT

- Bright mild steel

### DIMENSIONS

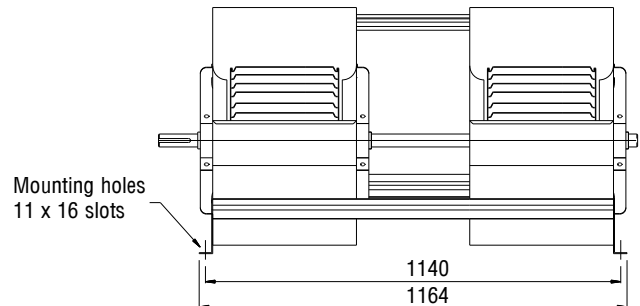
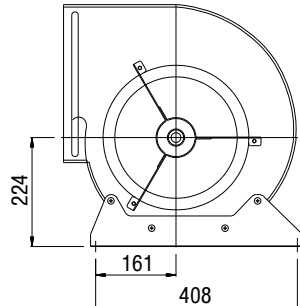
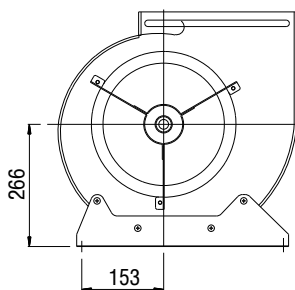


Part No. BPC321-321-75C



Part No. BPC321-321-75A

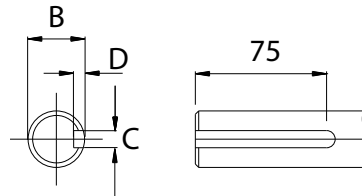
### DISCHARGE POSITIONS



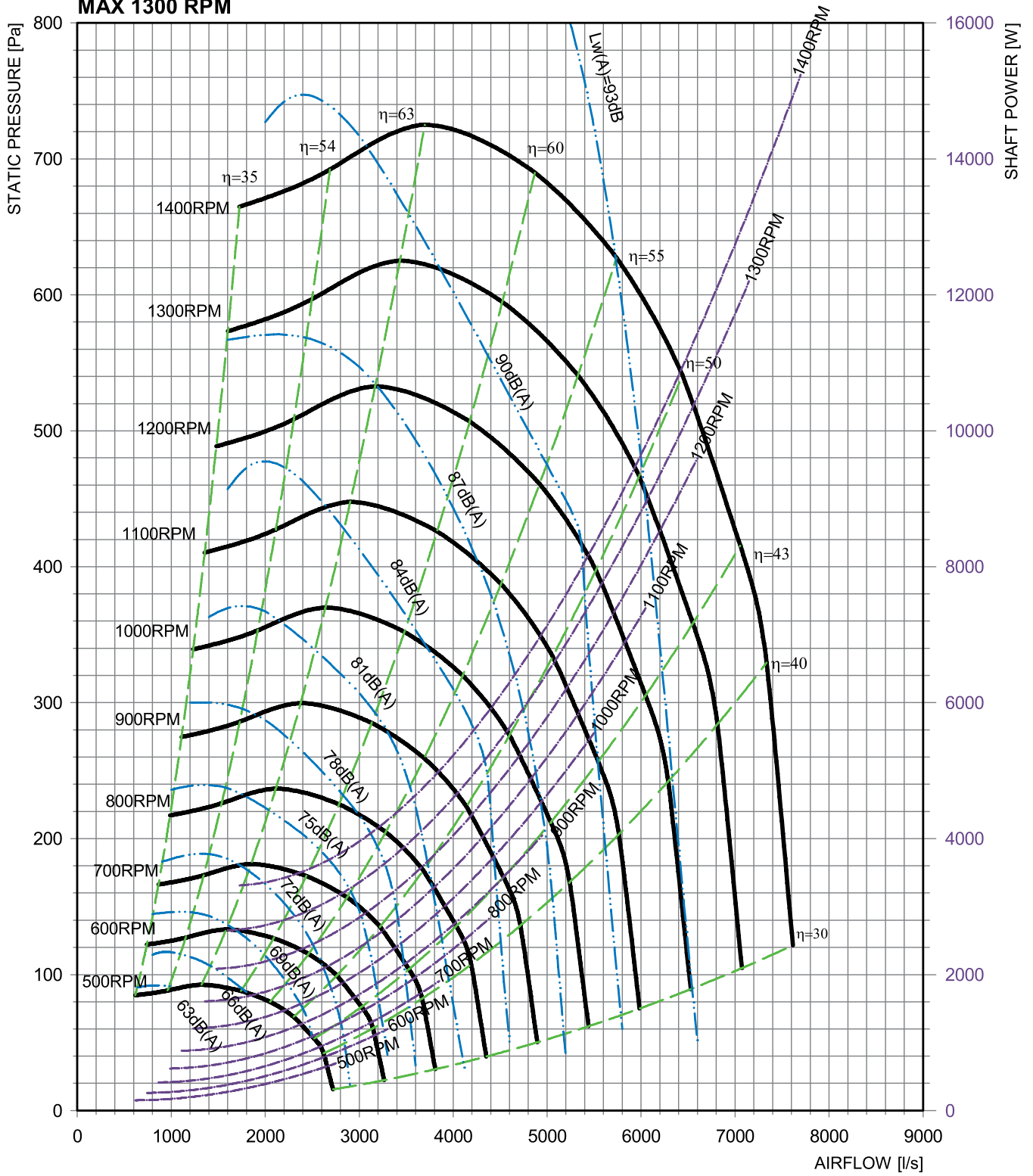
### SHAFT DETAIL

	B	C	D
BPC321-321-75C / 75A [mm]	ø25.00	8.00	4.20
	ø24.96	7.96	4.00

Note: Shaft - ø25.0mm uses 8mm x 7mm keyway



**DUCTED DISCHARGE  
MAX 1300 RPM**



# TWIN BELT DRIVE, 15" X 11" STANDARD DUTY

## BPC381-286-XXX

### APPLICATIONS

- Air handling units
- Fan coil units
- Evaporative condensers
- Cooling towers
- Air conditioning units
- General ventilation

### HOUSING

- Galvanised steel

### WHEEL

- Galvanised steel

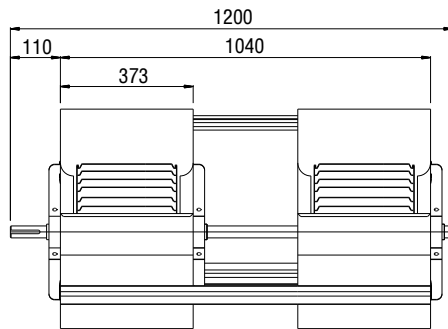
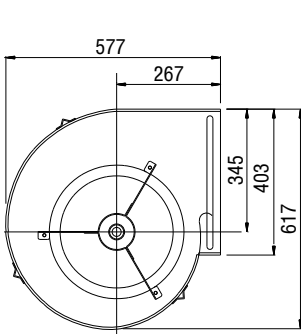
### WEIGHT

- 36.0 kg

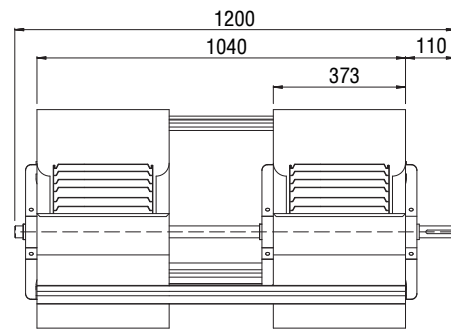
### SHAFT

- Bright mild steel

### DIMENSIONS

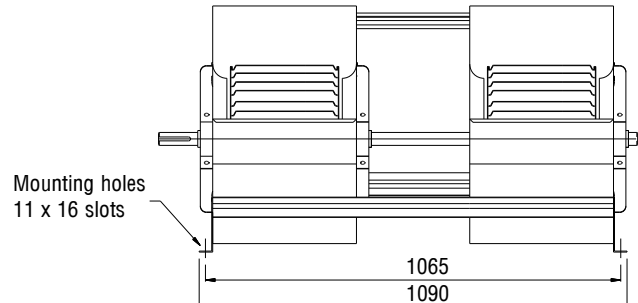
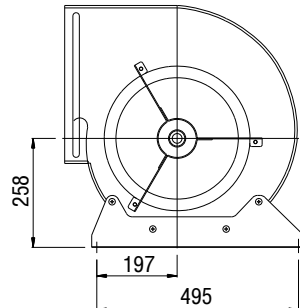
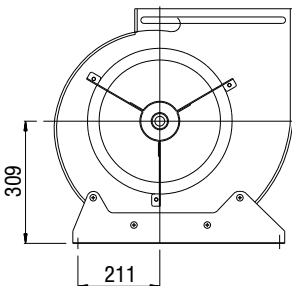


Part No. BPC381-286-75C



Part No. BPC381-286-75A

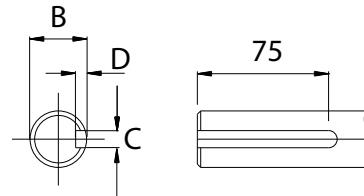
### DISCHARGE POSITIONS



### SHAFT DETAIL

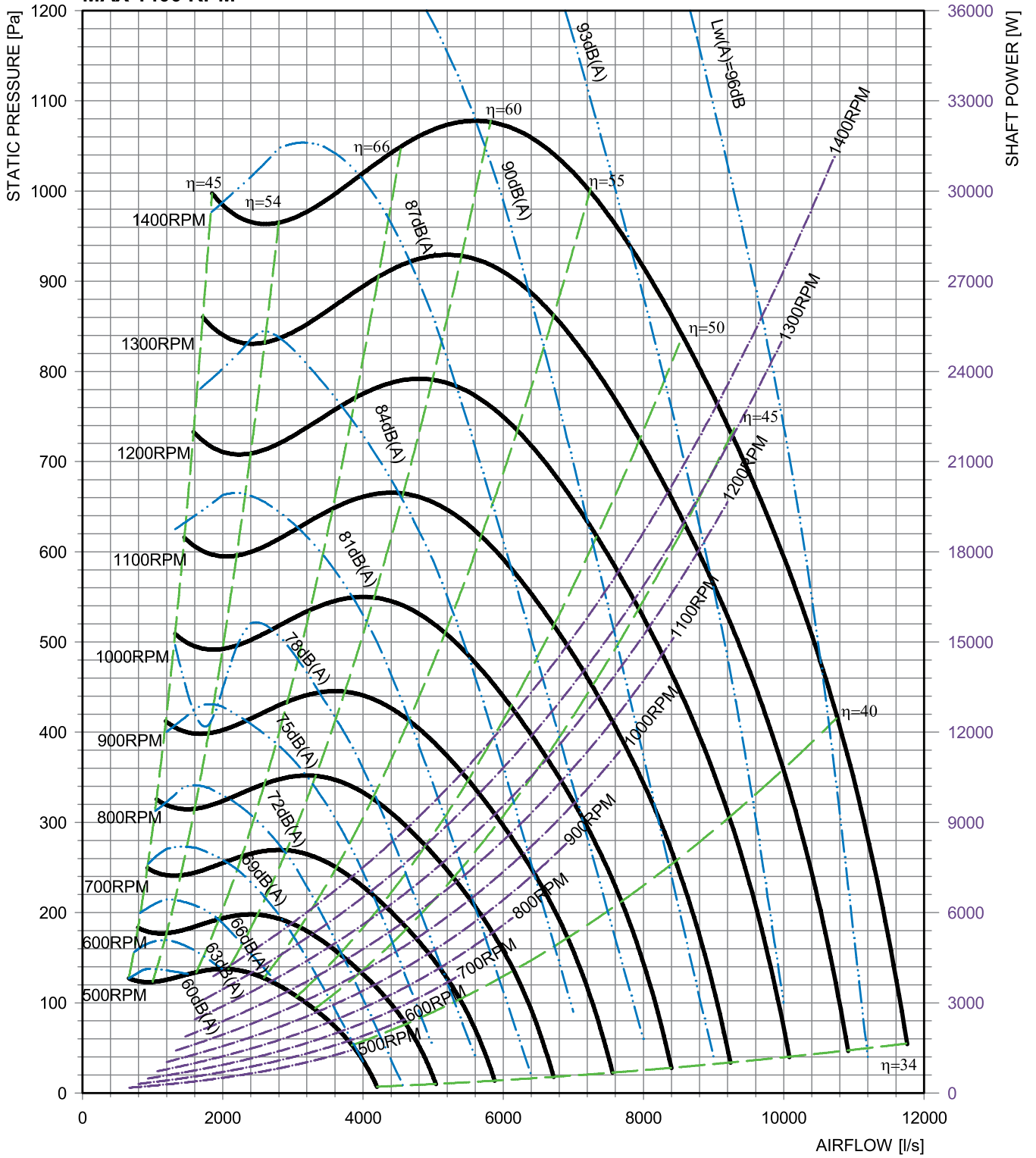
	B	C	D
BPC381-286-75C / 75A [mm]	ø25.00	8.00	4.20
	ø24.96	7.96	4.00

Note: Shaft - ø25.0mm uses 8mm x 7mm keyway





**DUCTED DISCHARGE  
MAX 1400 RPM**



# TWIN BELT DRIVE, 15" X 15" STANDARD DUTY

## BPC381-381-XXX

### APPLICATIONS

- Air handling units
- Fan coil units
- Evaporative condensers
- Cooling towers
- Air conditioning units
- General ventilation

### HOUSING

- Galvanised steel

### WHEEL

- Galvanised steel

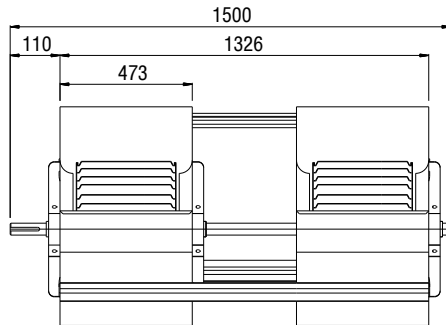
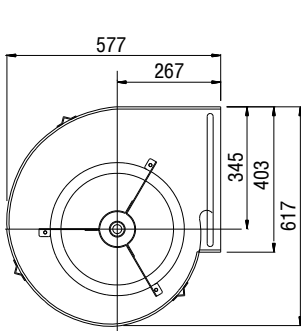
### WEIGHT

- 42.5 kg

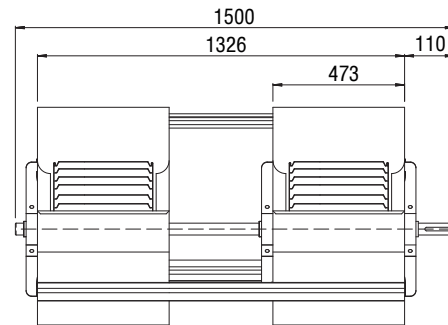
### SHAFT

- Bright mild steel

### DIMENSIONS

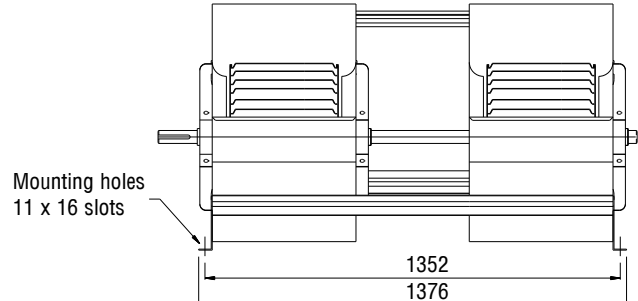
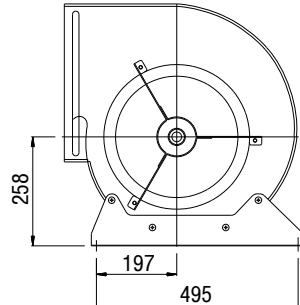
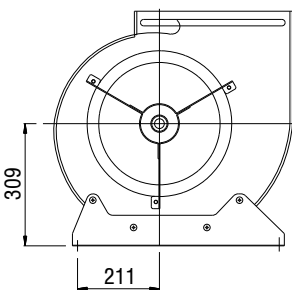


Part No. BPC381-381-75C



Part No. BPC381-381-75A

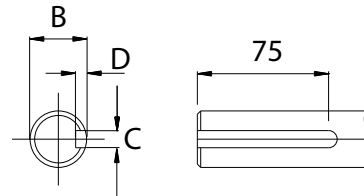
### DISCHARGE POSITIONS



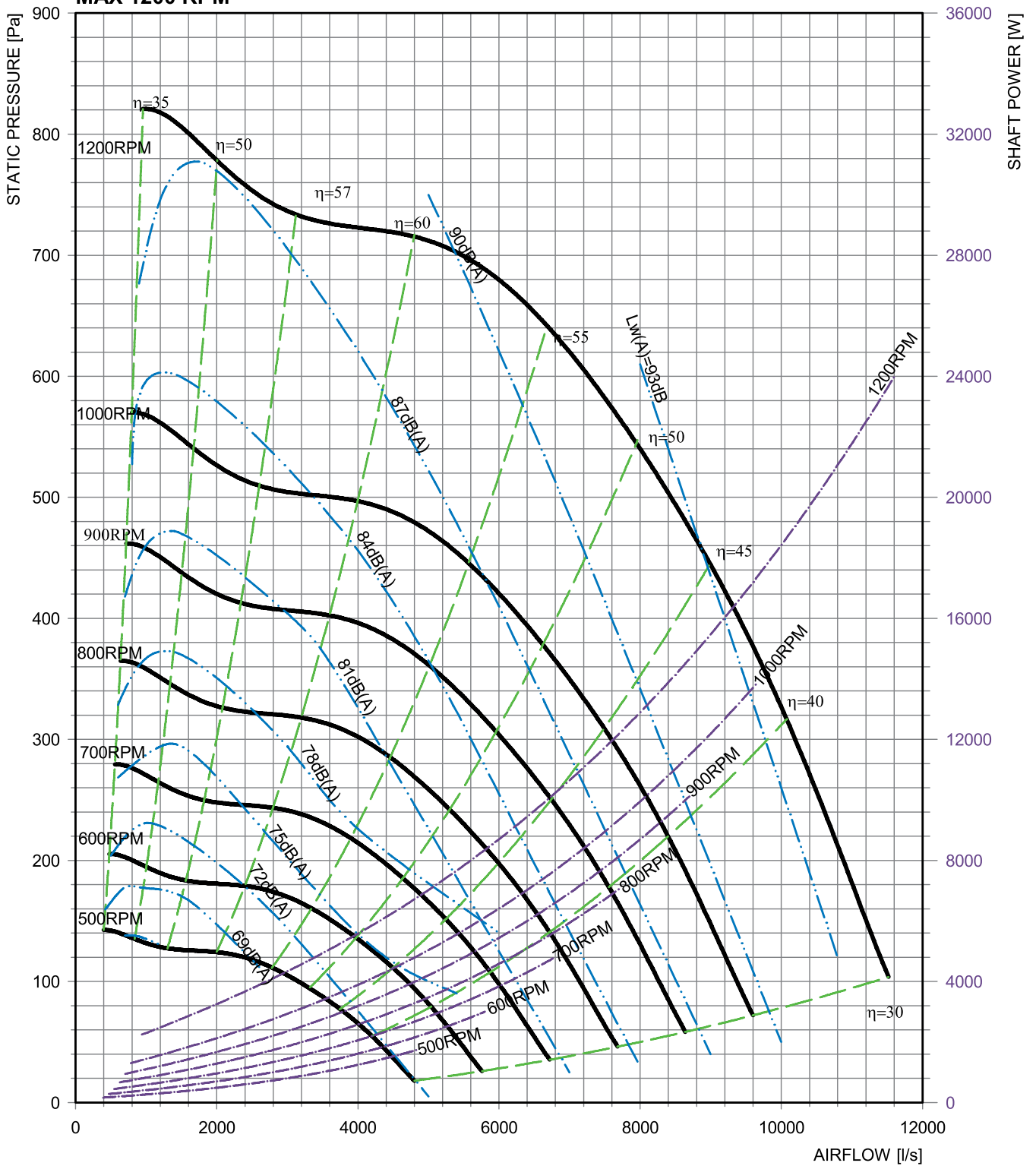
### SHAFT DETAIL

	B	C	D
BPC381-381-75C / 75A [mm]	ø25.00	8.00	4.20
	ø24.96	7.96	4.00

Note: Shaft - ø25.0mm uses 8mm x 7mm keyway



**DUCTED DISCHARGE  
MAX 1200 RPM**



# TWIN BELT DRIVE, 18" X 19" STANDARD DUTY BPC457-483-XXX

## APPLICATIONS

- Air handling units
- Fan coil units
- Evaporative condensers
- Cooling towers
- Air conditioning units
- General ventilation

## HOUSING

- Galvanised steel

## WHEEL

- Galvanised steel

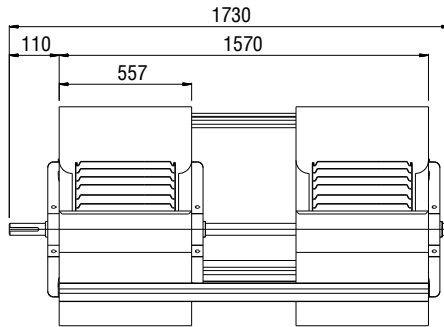
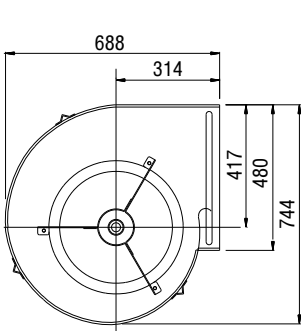
## WEIGHT

- 59.0 kg

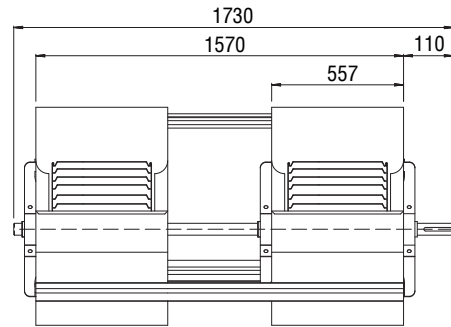
## SHAFT

- Bright mild steel

## DIMENSIONS

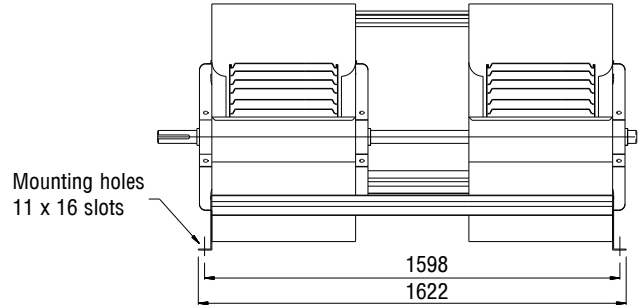
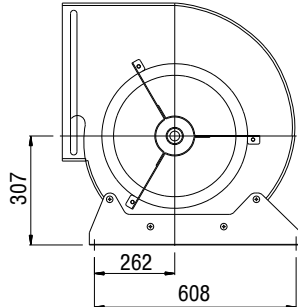
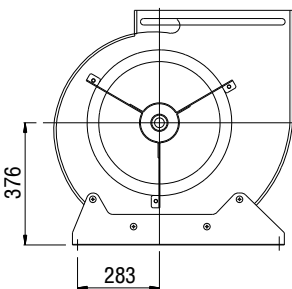


Part No. BPC457-483-75C



Part No. BPC457-483-75A

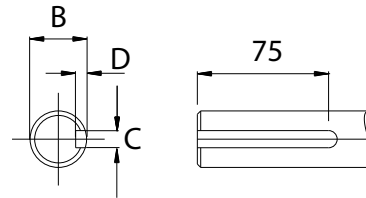
## DISCHARGE POSITIONS



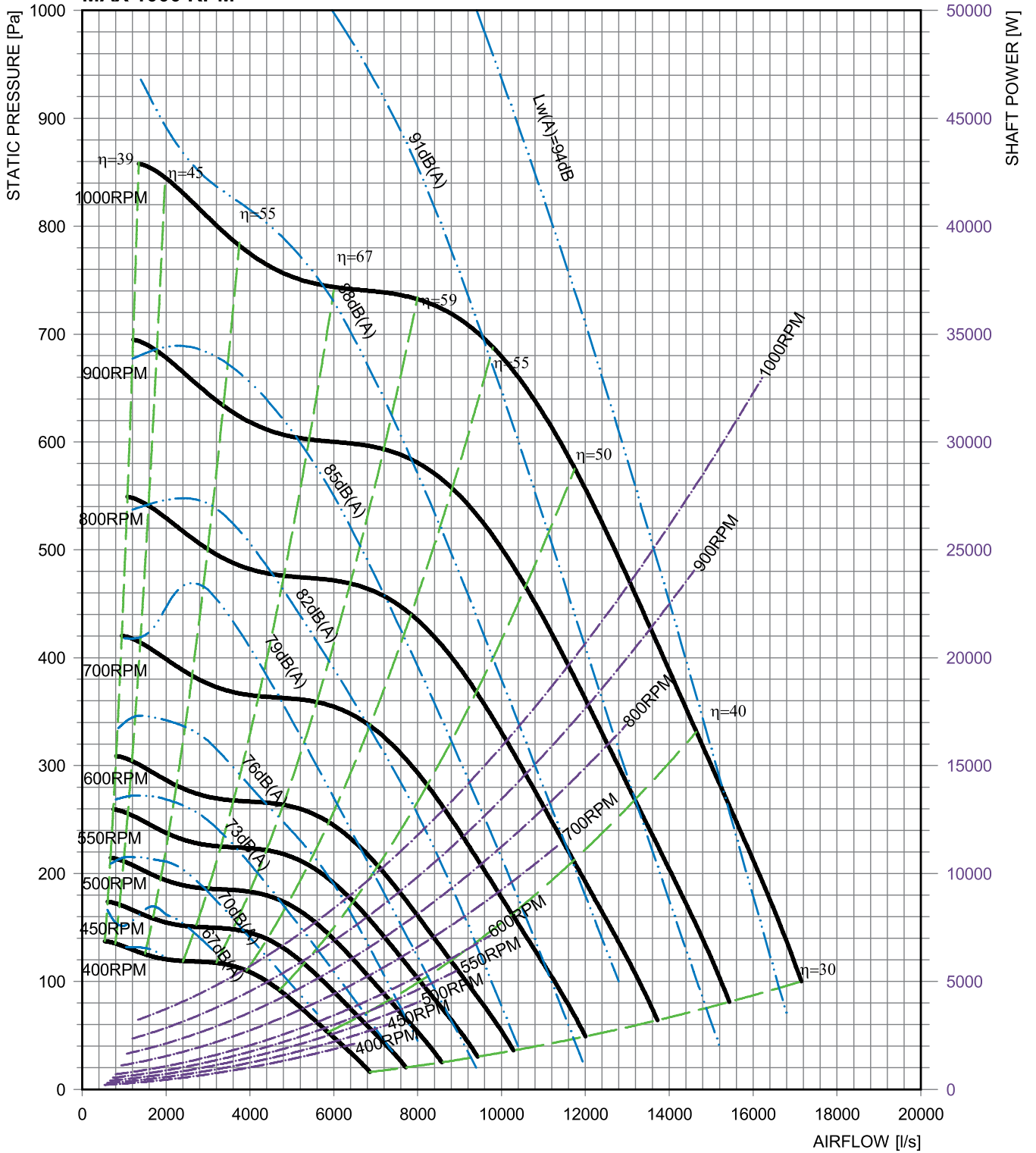
## SHAFT DETAIL

	B	C	D
BPC457-483-75C / 75A [mm]	ø25.00	8.00	4.20
	ø24.96	7.96	4.00

Note: Shaft - ø25.0mm uses 8mm x 7mm keyway



**DUCTED DISCHARGE  
MAX 1000 RPM**





#### HEAD OFFICE

**Regal Beloit Australia Pty Ltd** ABN 61 122 303 084  
19 Corporate Ave (PO Box 2340)  
Rowville VIC 3178, AUSTRALIA  
Customer Service: 1300 888 853  
Fax: +61 3 9237 4050  
[www.regalaustralia.com.au](http://www.regalaustralia.com.au)

#### STATE OFFICES

##### VICTORIA

19 Corporate Avenue  
Rowville VIC 3178  
T: 1300 888 853  
F: +61 3 9237 4050

##### NEW SOUTH WALES

8 Bushells Place  
Wetherill Park NSW 2164  
T: 1300 888 853

F: +61 2 8781 3131

##### QUEENSLAND

7 Mahogany Court  
Willawong QLD 4110  
T: 1300 888 853  
F: +61 7 3246 3210  
CAIRNS (Service • Repairs • Sales)  
2/159-161 Newell Street  
Bungalow QLD 4870  
T: 1300 888 853  
F: +61 7 4033 5553

#### PRESENT IN

MACKAY  
SOUTH AUSTRALIA  
WESTERN AUSTRALIA  
T: 1300 888 853

#### NEW ZEALAND

Regal Beloit New Zealand Ltd  
**AUCKLAND**  
18 Jomac Place  
Avondale  
T: 0800 676 722  
F: +64 9 820 8504

#### PRESENT IN

CHRISTCHURCH  
ROTORUA  
T: 0800 676 722

#### MALAYSIA

Torin Industries SND BHD (MALAYSIA)  
No. 6536A Jalan Bukit Kemuning  
Batu 6 Seksyen 34  
40470 Shah Alam Selangor  
T: +60 3 5124 6157  
F: +60 3 5121 1467

#### SINGAPORE

Regal Beloit South East Asia Pte. Ltd.  
12 Tuas Loop 637346  
SINGAPORE  
T: +65 6863 3473  
F: +65 6863 3476

#### THAILAND

FASCO Motors (Thailand) Limited  
29/7-8 Bangkruay-Sainoi Road  
Bangkrang  
Muang Nonthaburi District Nonthaburi 11000  
THAILAND  
T: +66 2447 3300  
F: +66 2447 3500

#### APPLICATION CONSIDERATIONS

The proper selection and application air system products and components, including the related area of product safety, is the responsibility of the customer. Operating and performance requirements and potential associated issues will vary appreciably depending upon the use and application of such products and components. The scope of the technical and application information included in this publication is necessarily limited. Unusual operating environments and conditions, lubrication requirements, loading supports, and other factors can materially affect the application and operating results of the products and components and the customer should carefully review its requirements. Any technical advice or review furnished by Regal Beloit Australia Pty Ltd and its affiliates with respect to the use of products and components is given in good faith and without charge, and Regal assumes no obligation or liability for the advice given, or results obtained, all such advice and review being given and accepted at customer's risk.

For a copy of our Standard Terms and Conditions of Sale, Disclaimers of Warranty and Limitation of Liability, please contact Customer Service at 1300 888 853 or visit [www.regalaustralia.com.au](http://www.regalaustralia.com.au). These terms and conditions of sale, disclaimers and limitations of liability apply to any person who may buy, acquire or use a Regal Beloit Australia Pty Ltd product referred to herein, including any person who buys from a licensed distributor of these branded products.

Regal and Genteq are trademarks of Regal Beloit Corporation (USA) or one of its affiliated companies.

©2016, 2016 Regal Beloit Australia Pty Ltd, All Rights Reserved. MCC16070E • G0006 • r6 • Created in AU

**REGAL**<sup>®</sup>