

SINGLE BELT DRIVE BLOWERS

BC SERIES

REGAL®

BELT DRIVE BLOWER, DOUBLE INLET FORWARD CURVE CENTRIFUGAL BLOWERS, SINGLE BELT DRIVE

DESCRIPTION	3
PART NUMBER IDENTIFICATION	3
SINGLE BELT DRIVE	4 - 21
9" x 7"	4 - 5
9" x 9"	6 - 7
10" x 8"	8 - 9
10" x 10"	10 - 11
12" x 9"	12 - 13
12" x 12"	14 - 15
15" x 11"	16 - 17
15" x 15"	18 - 19
18" x 19"	20 - 21

INTRODUCTION

DESCRIPTION

The BC range of forward curved double width double inlet single blowers from Regal are manufactured with wheel diameters from 241mm to 457mm and can deliver air volumes of up to 8000L/S.

Housings and wheels are manufactured from galvanised steel, wheels are forward curve design with inserted blades, hubs are available with 25mm bores.

ACCESSORIES

Housing support brackets are available separately for each blower size.

APPLICATIONS

- Air handling units
- Fan coil units
- Evaporative condensers
- Cooling towers
- Air conditioning units
- General ventilation

PART NUMBER IDENTIFICATION

When placing an order the blower product code should be specified. This product code is composed in accordance with the following example:

B	C	3	8	1	-	3	8	1	-	7	5
1	2	3-5			6	7-9		10	11-12		

POSITION 1

Type of drive

B = Belt

POSITION 2

Wheel type

C = Inserted blade (CR) type

POSITION 3 TO 5

Wheel diameter

In millimeters

POSITION 6

Dash

POSITION 7 TO 9

Wheel width

In millimeters

POSITION 10

Dash

POSITIONS 11 TO 13

Shaft configuration

750 = ø25mm Standard



SINGLE BELT DRIVE, 9" X 7" STANDARD DUTY

APPLICATIONS

- Air handling units
- Fan coil units
- Evaporative condensers
- Cooling towers
- Air conditioning units
- General ventilation

HOUSING

- Galvanised steel

WHEEL

- Galvanised steel

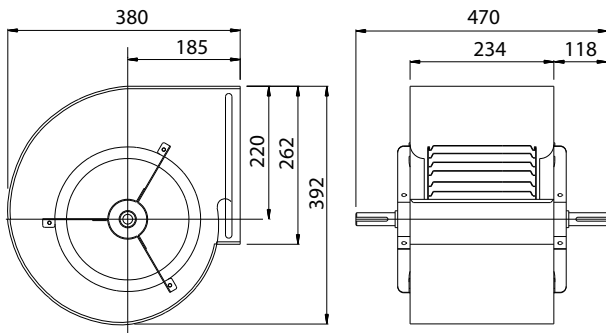
WEIGHT

- 7.0 kg

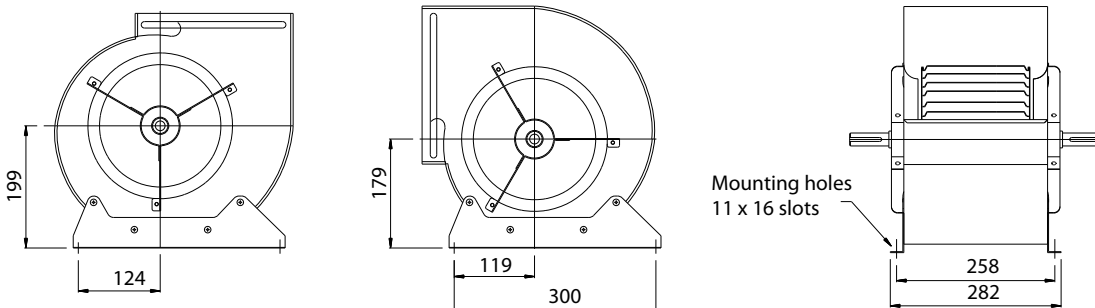
SHAFT

- Bright mild steel

DIMENSIONS



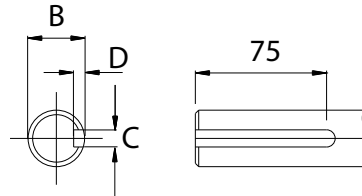
DISCHARGE POSITIONS



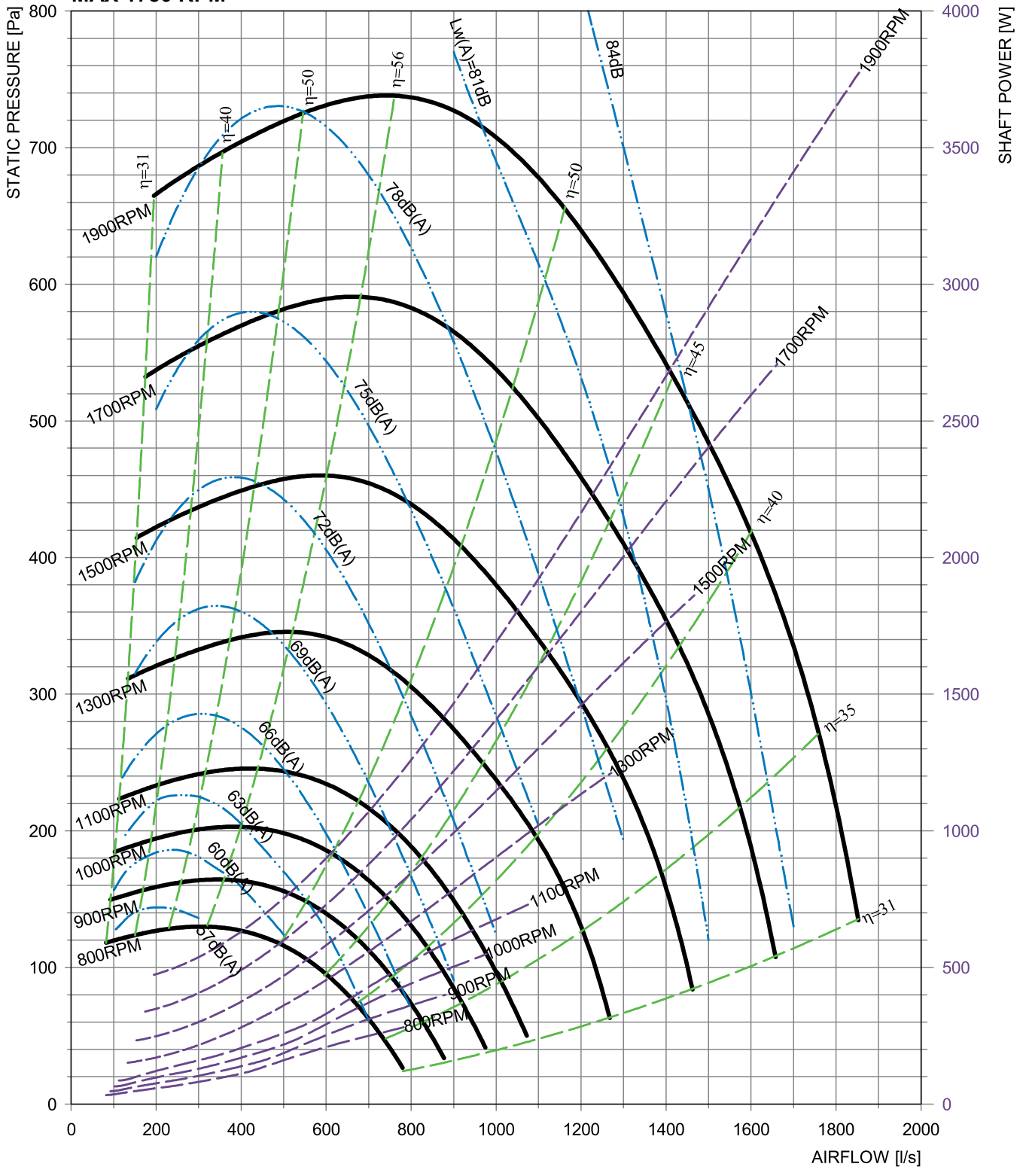
SHAFT DETAIL

		B	C	D
BC241-181-75	[mm]	ø25.00	8.00	4.20
		ø24.96	7.96	4.00

Note: Shaft - ø25.0mm uses 8mm x 7mm keyway



DUCTED DISCHARGE
MAX 1750 RPM



SINGLE BELT DRIVE, 9" X 9" STANDARD DUTY

APPLICATIONS

- Air handling units
- Fan coil units
- Evaporative condensers
- Cooling towers
- Air conditioning units
- General ventilation

HOUSING

- Galvanised steel

WHEEL

- Galvanised steel

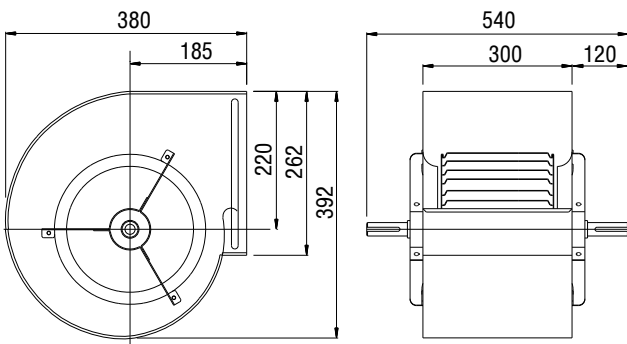
WEIGHT

- 8.0 kg

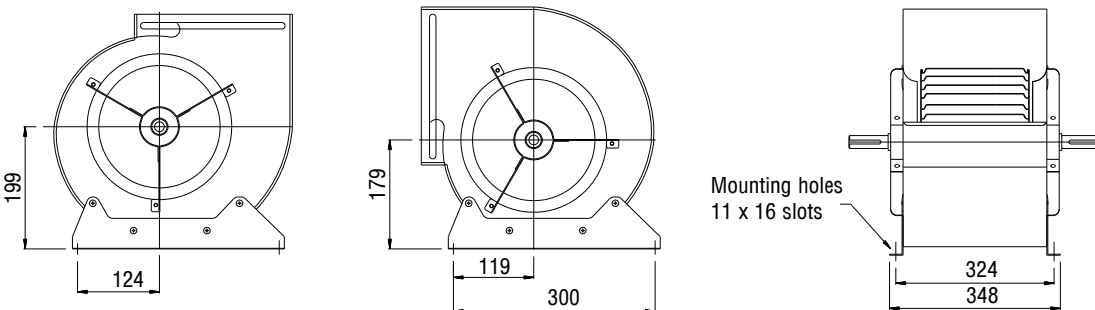
SHAFT

- Bright mild steel

DIMENSIONS



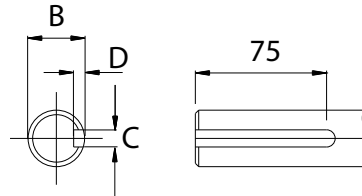
DISCHARGE POSITIONS



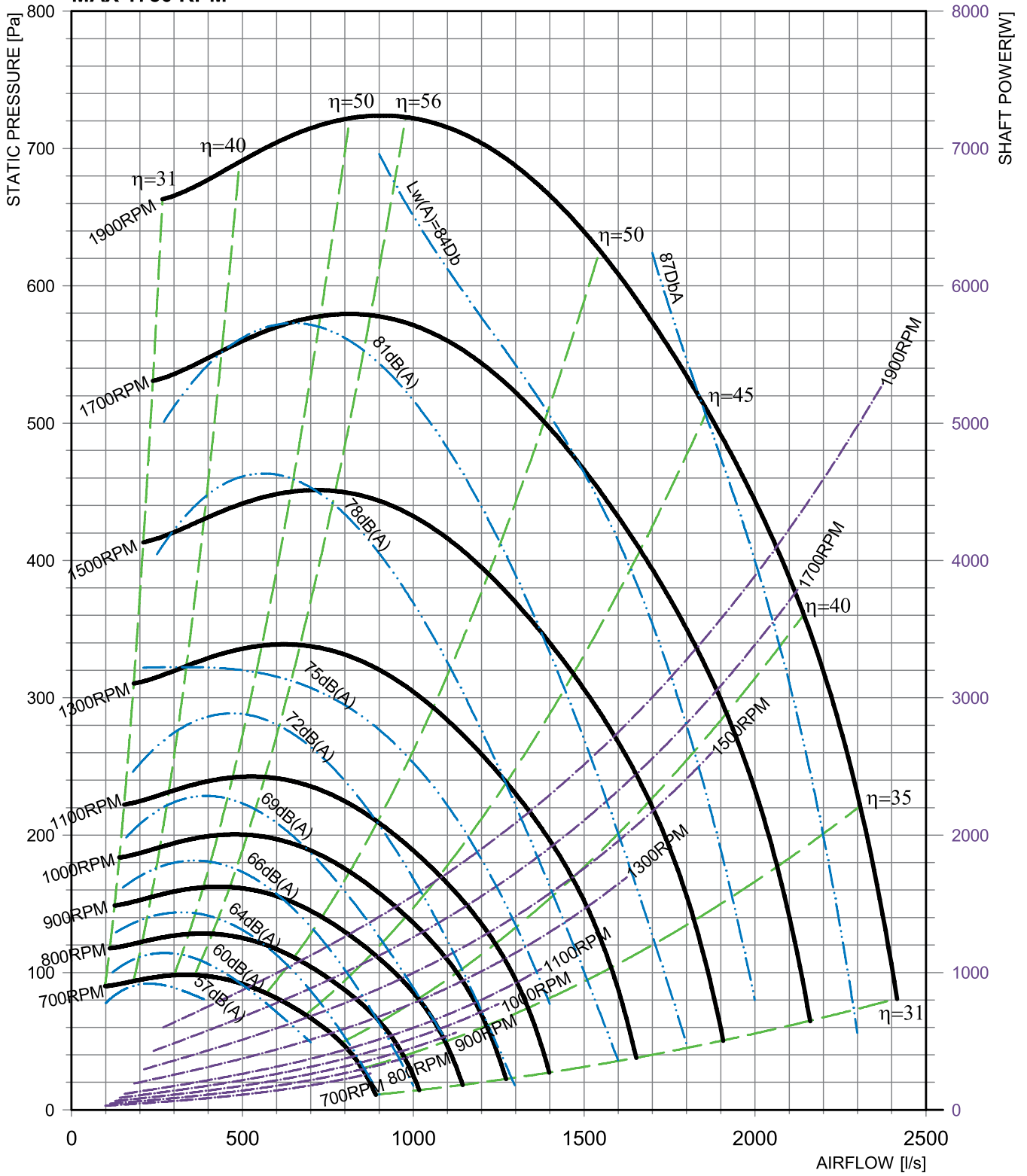
SHAFT DETAIL

		B	C	D
BC241-241-75	[mm]	ø25.00	8.00	4.20
		ø24.96	7.96	4.00

Note: Shaft - ø25.0mm uses 8mm x 7mm keyway



**DUCTED DISCHARGE
MAX 1750 RPM**



SINGLE BELT DRIVE, 10" X 8" STANDARD DUTY

APPLICATIONS

- Air handling units
- Fan coil units
- Evaporative condensers
- Cooling towers
- Air conditioning units
- General ventilation

HOUSING

- Galvanised steel

WHEEL

- Galvanised steel

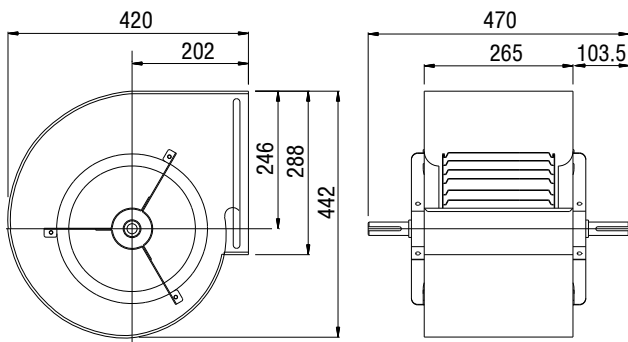
WEIGHT

- 9.0 kg

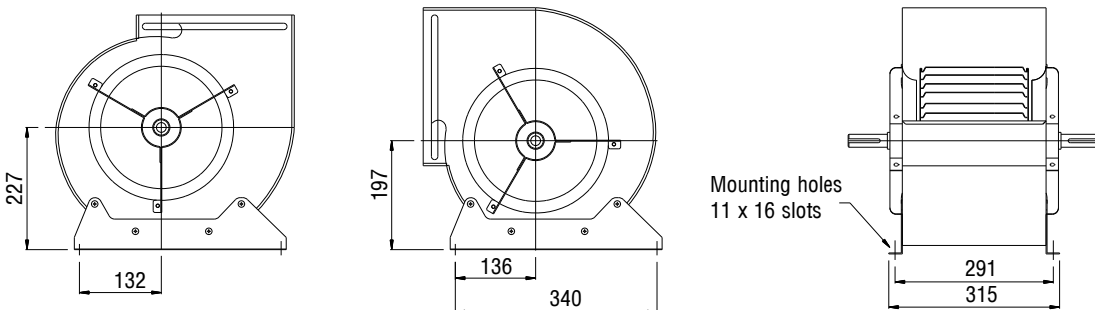
SHAFT

- Bright mild steel

DIMENSIONS



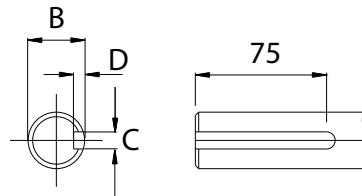
DISCHARGE POSITIONS



SHAFT DETAIL

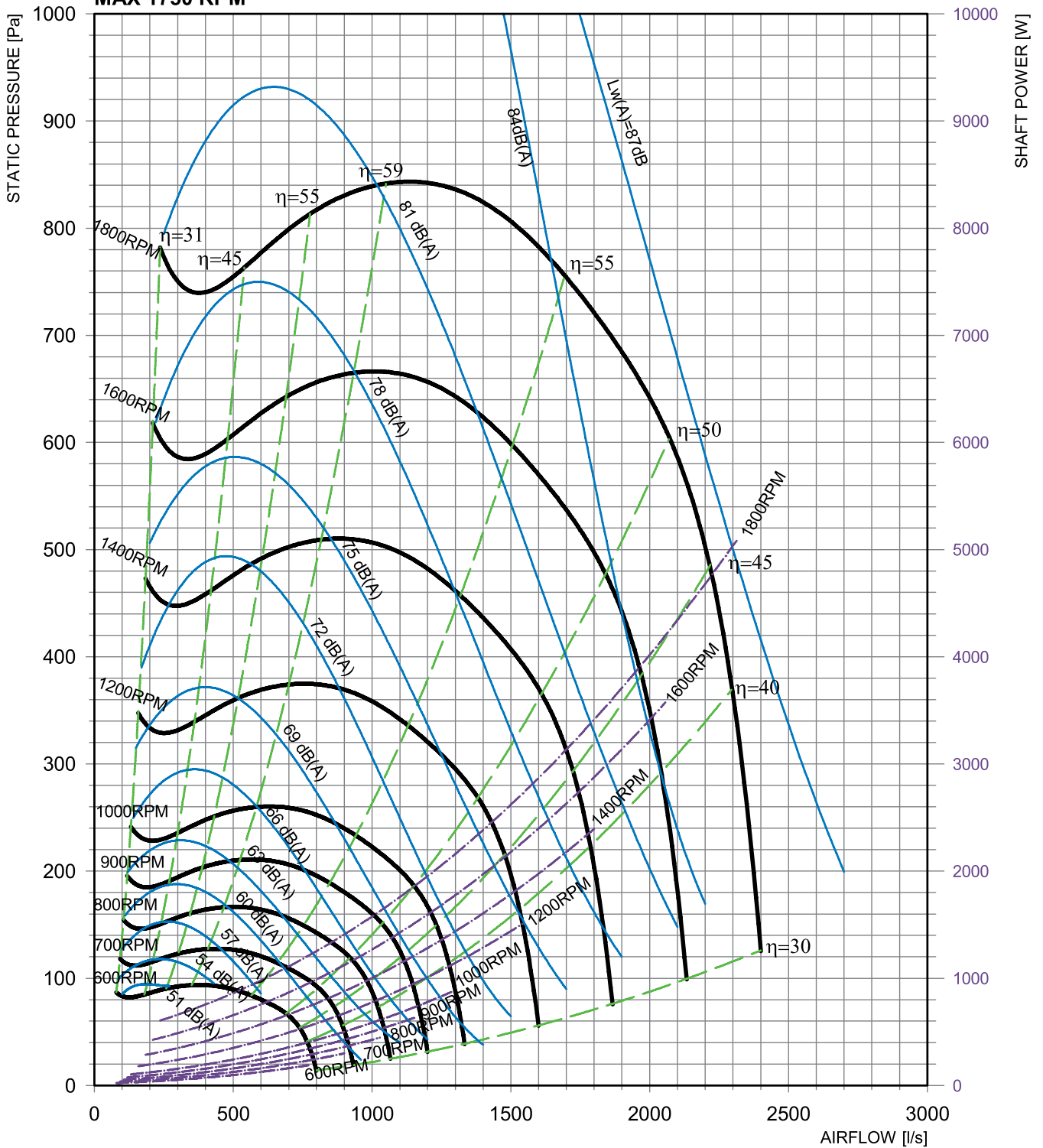
		B	C	D
BC270-203-75	[mm]	ø25.00	8.00	4.20
		ø24.96	7.96	4.00

Note: Shaft - ø25.0mm uses 8mm x 7mm keyway



DUCTED DISCHARGE

MAX 1750 RPM



SINGLE BELT DRIVE, 10" X 10" STANDARD DUTY

APPLICATIONS

- Air handling units
- Fan coil units
- Evaporative condensers
- Cooling towers
- Air conditioning units
- General ventilation

HOUSING

- Galvanised steel

WHEEL

- Galvanised steel

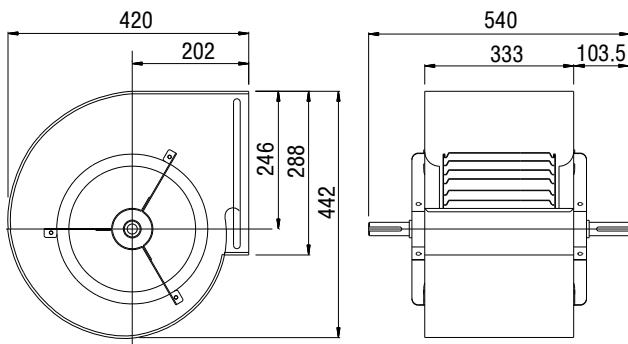
WEIGHT

- 10.5 kg

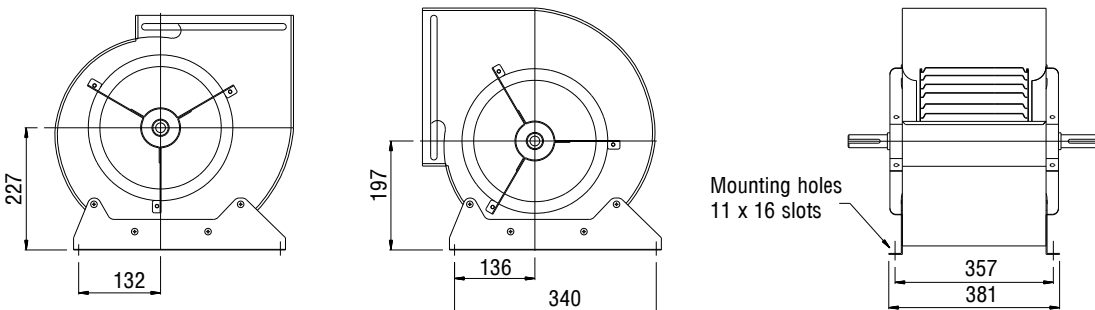
SHAFT

- Bright mild steel

DIMENSIONS



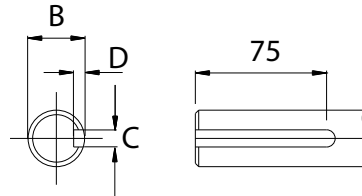
DISCHARGE POSITIONS



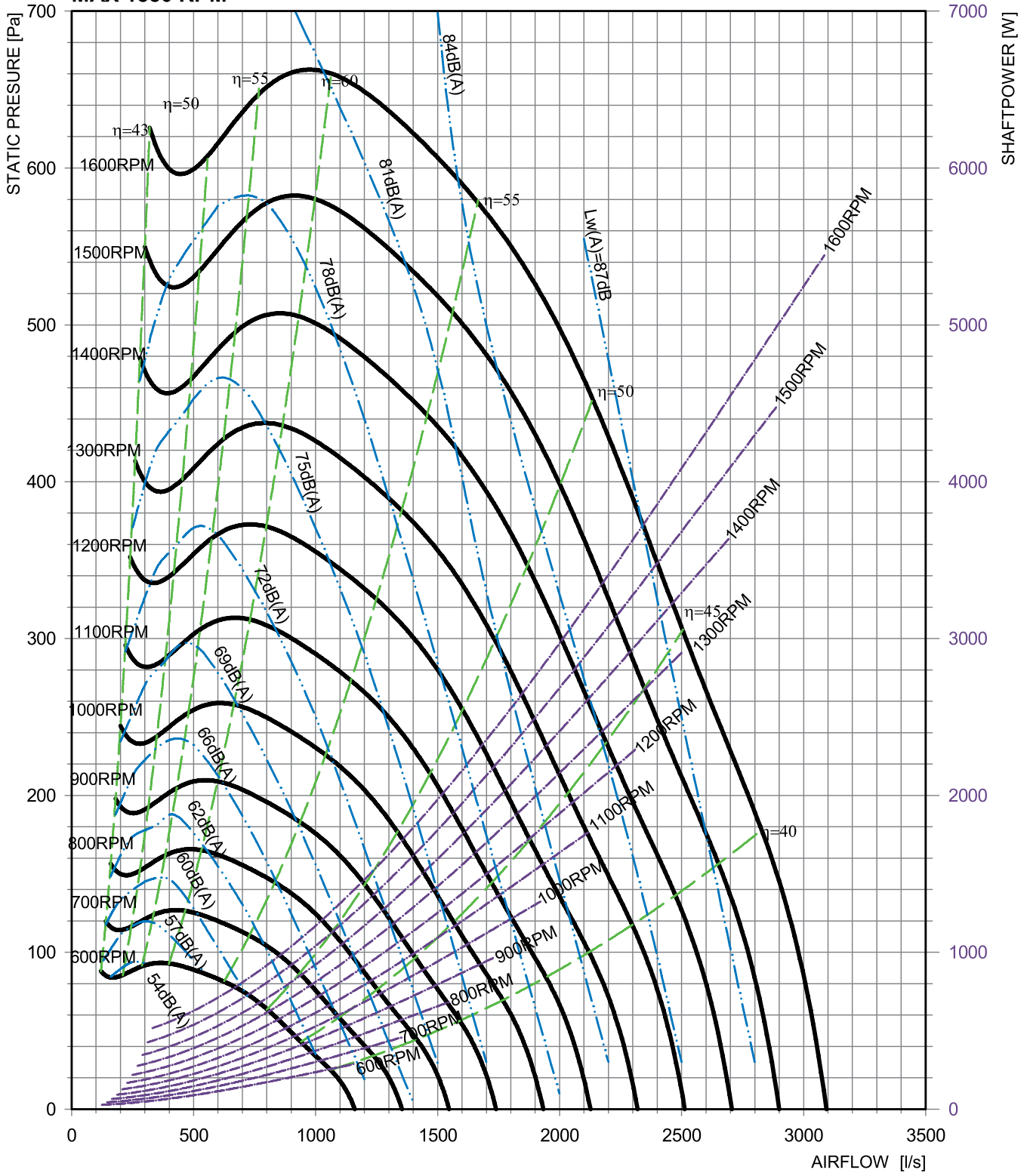
SHAFT DETAIL

		B	C	D
BC270-270-75	[mm]	ø25.00	8.00	4.20
		ø24.96	7.96	4.00

Note: Shaft - ø25.0mm uses 8mm x 7mm keyway



**DUCTED DISCHARGE
MAX 1550 RPM**



SINGLE BELT DRIVE, 12" X 9" STANDARD DUTY

APPLICATIONS

- Air handling units
- Fan coil units
- Evaporative condensers
- Cooling towers
- Air conditioning units
- General ventilation

HOUSING

- Galvanised steel

WHEEL

- Galvanised steel

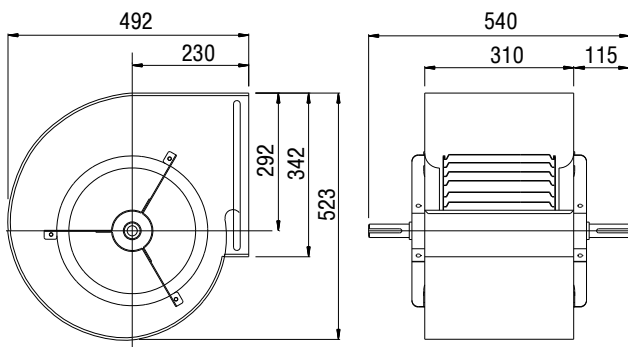
WEIGHT

- 12.5 kg

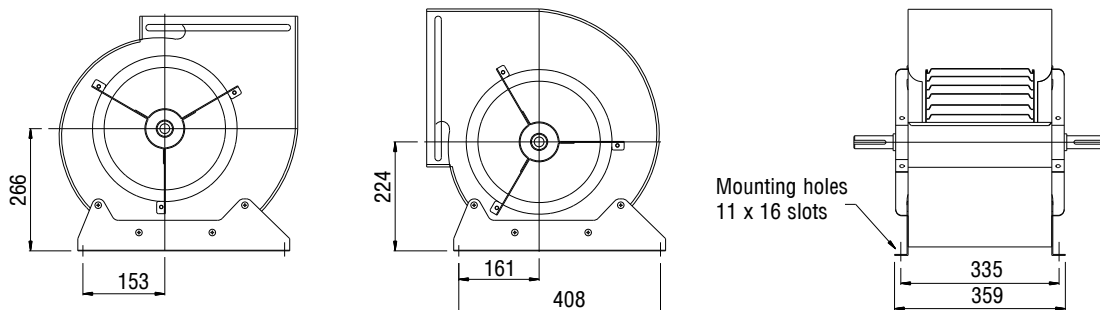
SHAFT

- Bright mild steel

DIMENSIONS



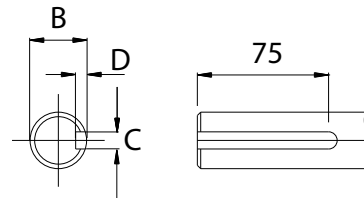
DISCHARGE POSITIONS



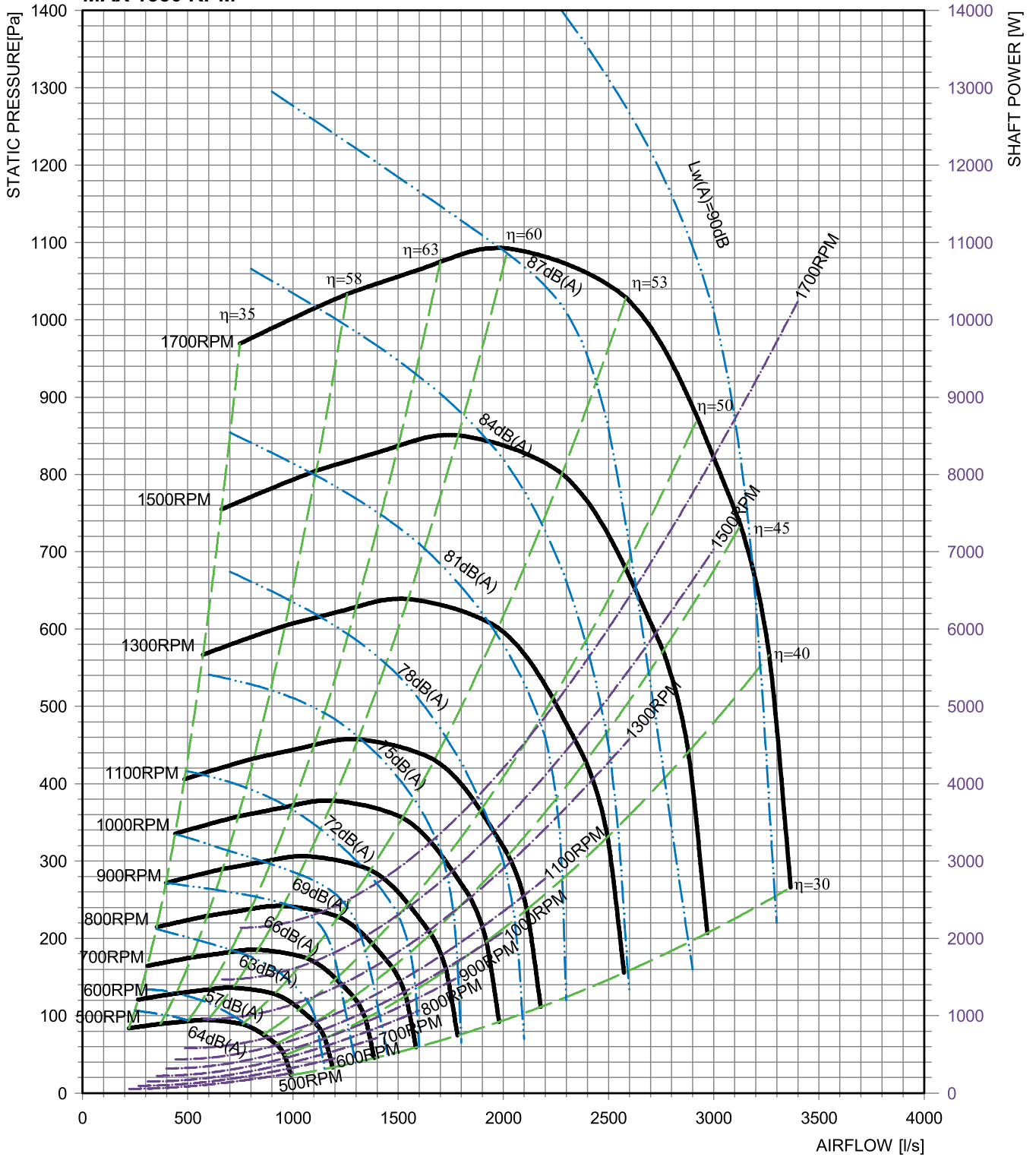
SHAFT DETAIL

		B	C	D
BC321-241-75	[mm]	ø25.00	8.00	4.20
		ø24.96	7.96	4.00

Note: Shaft - ø25.0mm uses 8mm x 7mm keyway



**DUCTED DISCHARGE
MAX 1550 RPM**



SINGLE BELT DRIVE, 12" X 12" STANDARD DUTY

APPLICATIONS

- Air handling units
- Fan coil units
- Evaporative condensers
- Cooling towers
- Air conditioning units
- General ventilation

HOUSING

- Galvanised steel

WHEEL

- Galvanised steel

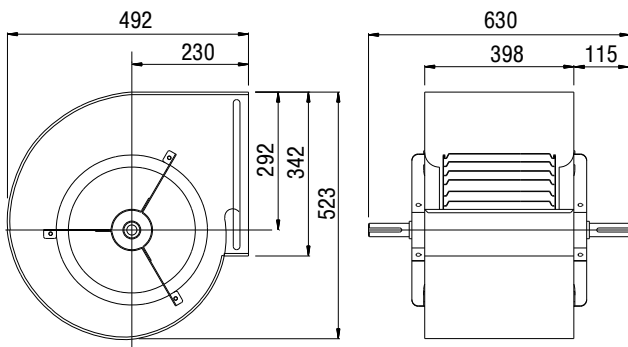
WEIGHT

- 13.0 kg

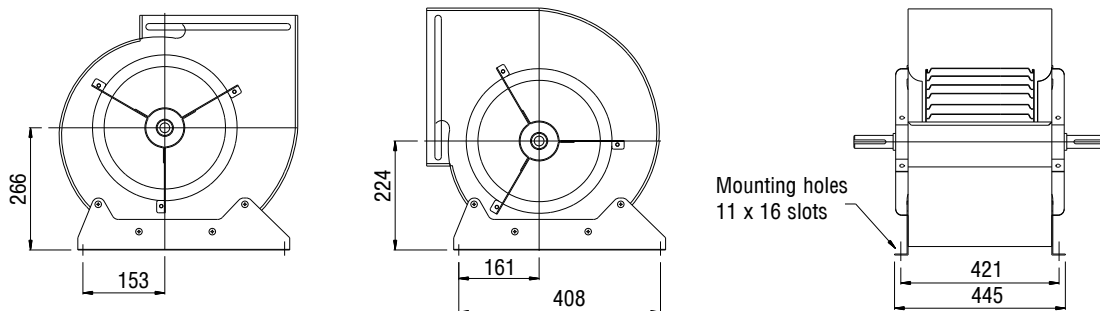
SHAFT

- Bright mild steel

DIMENSIONS



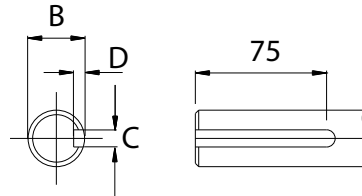
DISCHARGE POSITIONS



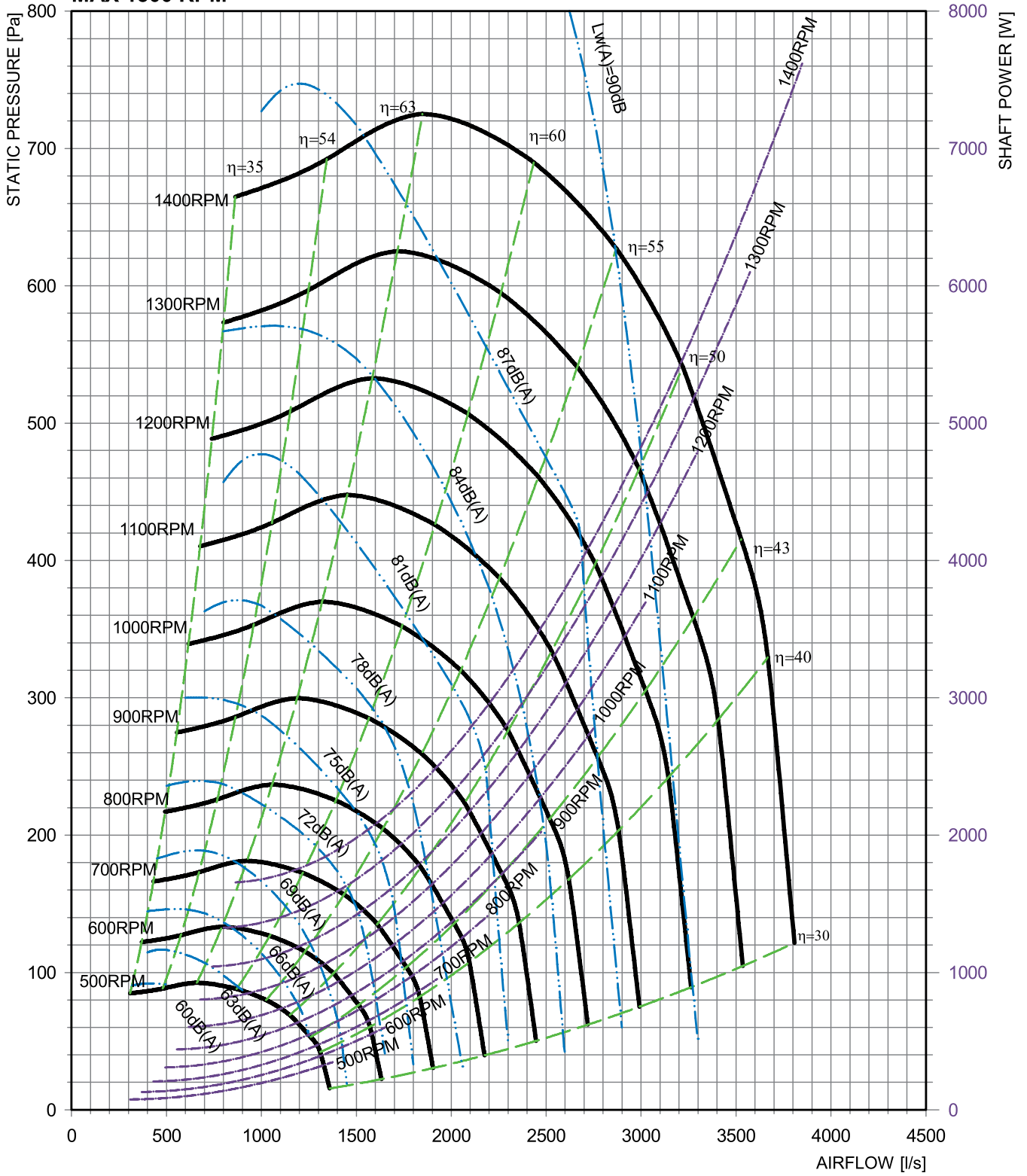
SHAFT DETAIL

		B	C	D
BC321-321-75	[mm]	ø25.00	8.00	4.20
		ø24.96	7.96	4.00

Note: Shaft - ø25.0mm uses 8mm x 7mm keyway



DUCTED DISCHARGE
MAX 1300 RPM



SINGLE BELT DRIVE, 15" X 11" STANDARD DUTY

APPLICATIONS

- Air handling units
- Fan coil units
- Evaporative condensers
- Cooling towers
- Air conditioning units
- General ventilation

HOUSING

- Galvanised steel

WHEEL

- Galvanised steel

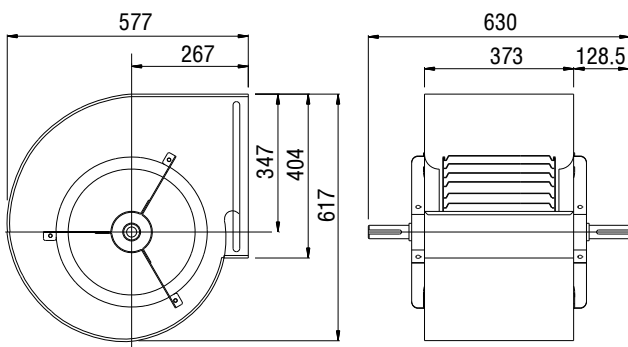
WEIGHT

- 17.5 kg

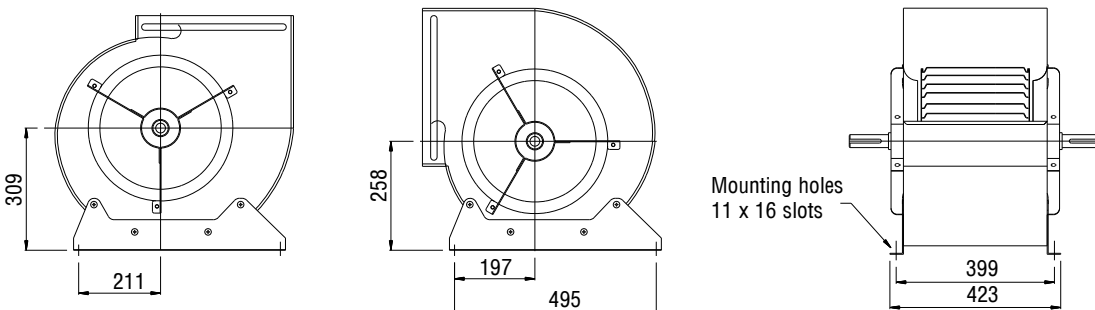
SHAFT

- Bright mild steel

DIMENSIONS



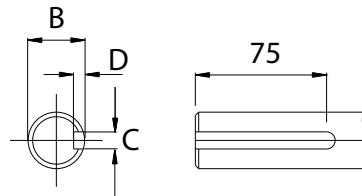
DISCHARGE POSITIONS



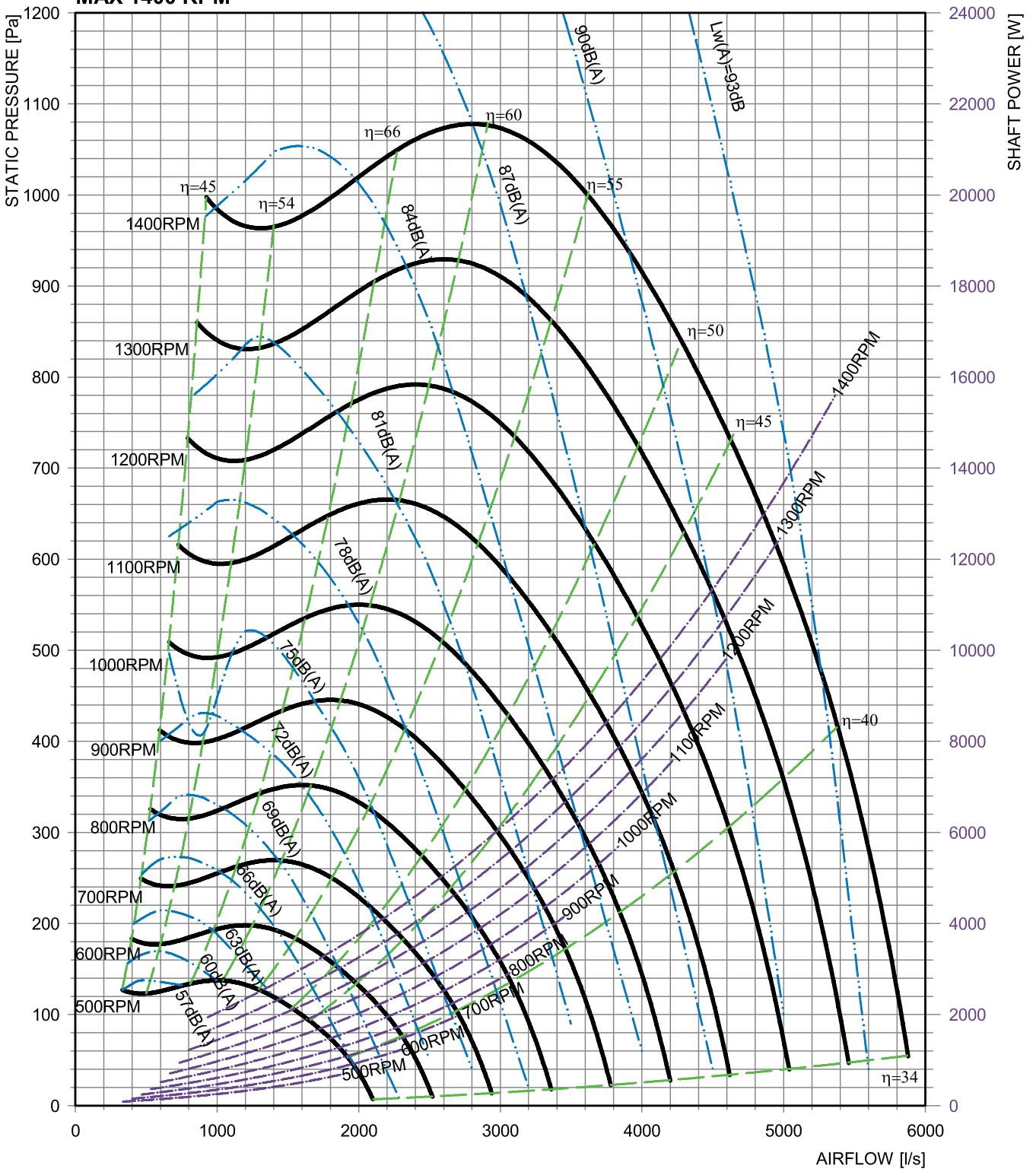
SHAFT DETAIL

		B	C	D
BC381-286-75	[mm]	ø25.00	8.00	4.20
		ø24.96	7.96	4.00

Note: Shaft - ø25.0mm uses 8mm x 7mm keyway



**DUCTED DISCHARGE
MAX 1400 RPM**



SINGLE BELT DRIVE, 15" X 15" STANDARD DUTY

APPLICATIONS

- Air handling units
- Fan coil units
- Evaporative condensers
- Cooling towers
- Air conditioning units
- General ventilation

HOUSING

- Galvanised steel

WHEEL

- Galvanised steel

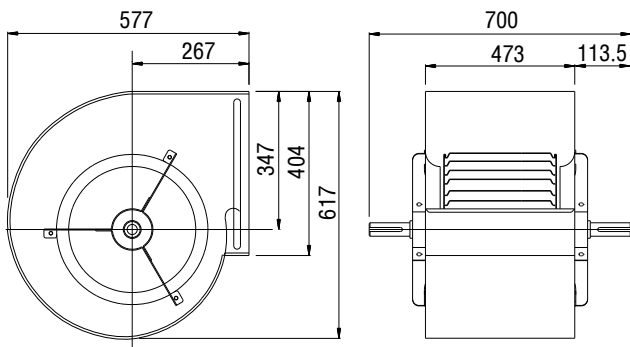
WEIGHT

- 20.0 kg

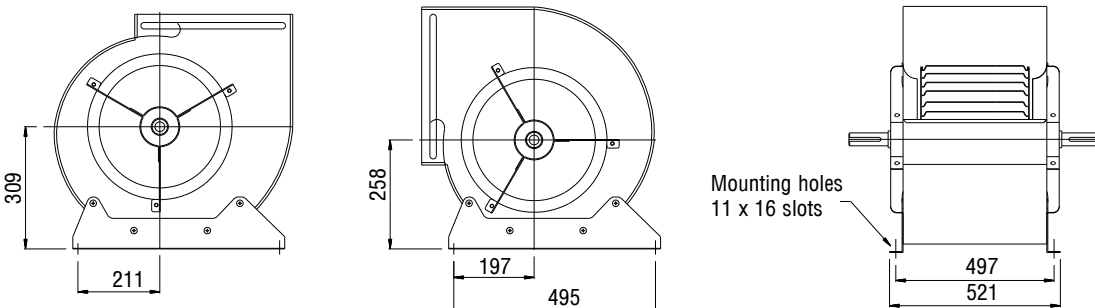
SHAFT

- Bright mild steel

DIMENSIONS



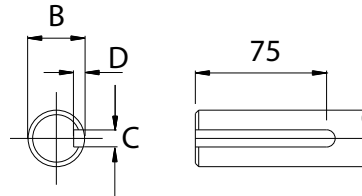
DISCHARGE POSITIONS



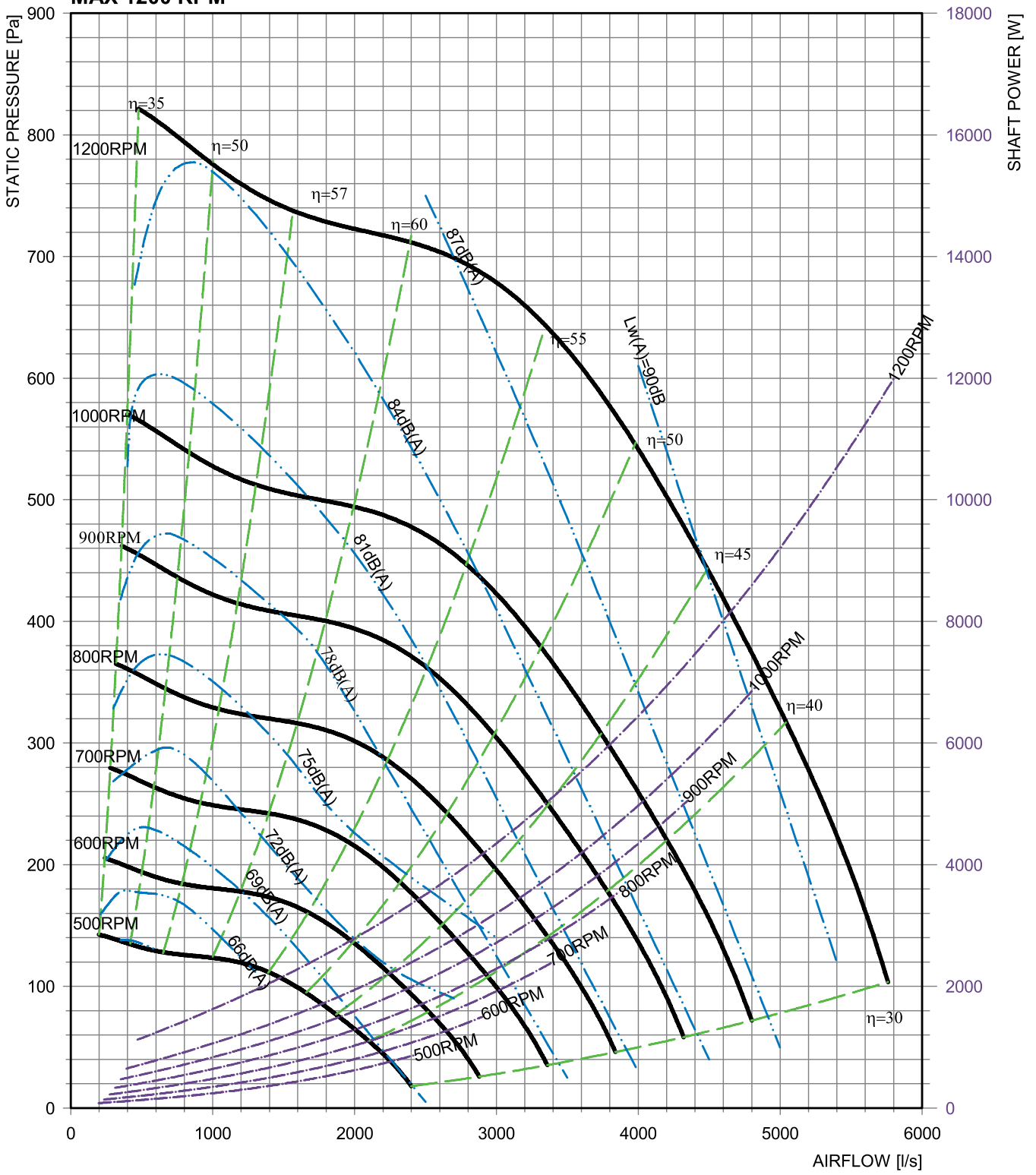
SHAFT DETAIL

		B	C	D
BC381-381-75	[mm]	ø25.00	8.00	4.20
		ø24.96	7.96	4.00

Note: Shaft - ø25.0mm uses 8mm x 7mm keyway



**DUCTED DISCHARGE
MAX 1200 RPM**



SINGLE BELT DRIVE, 18" X 19" STANDARD DUTY

APPLICATIONS

- Air handling units
- Fan coil units
- Evaporative condensers
- Cooling towers
- Air conditioning units
- General ventilation

HOUSING

- Galvanised steel

WHEEL

- Galvanised steel

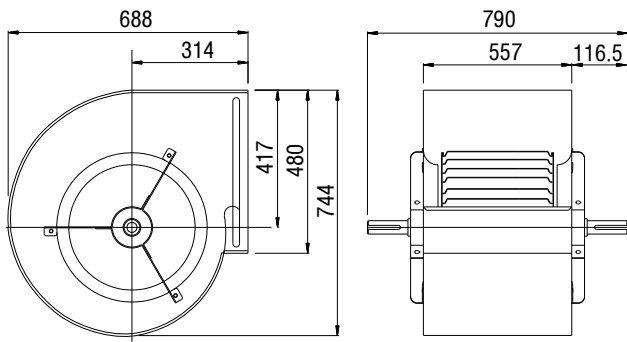
WEIGHT

- 29.5 kg

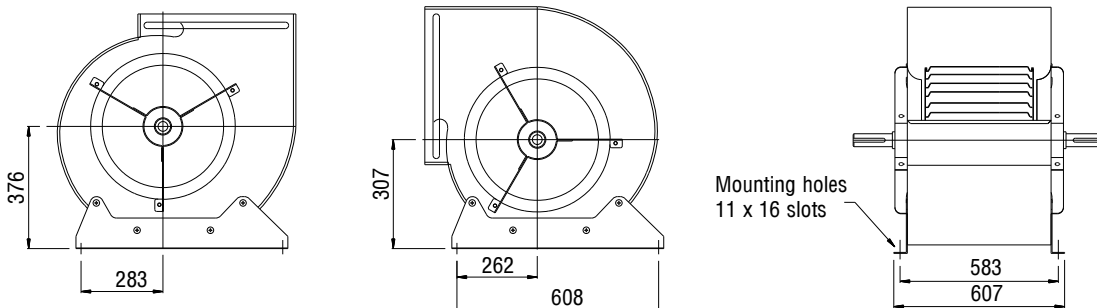
SHAFT

- Bright mild steel

DIMENSIONS



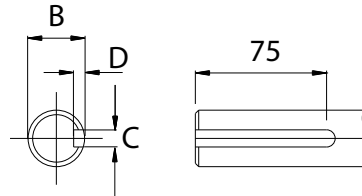
DISCHARGE POSITIONS



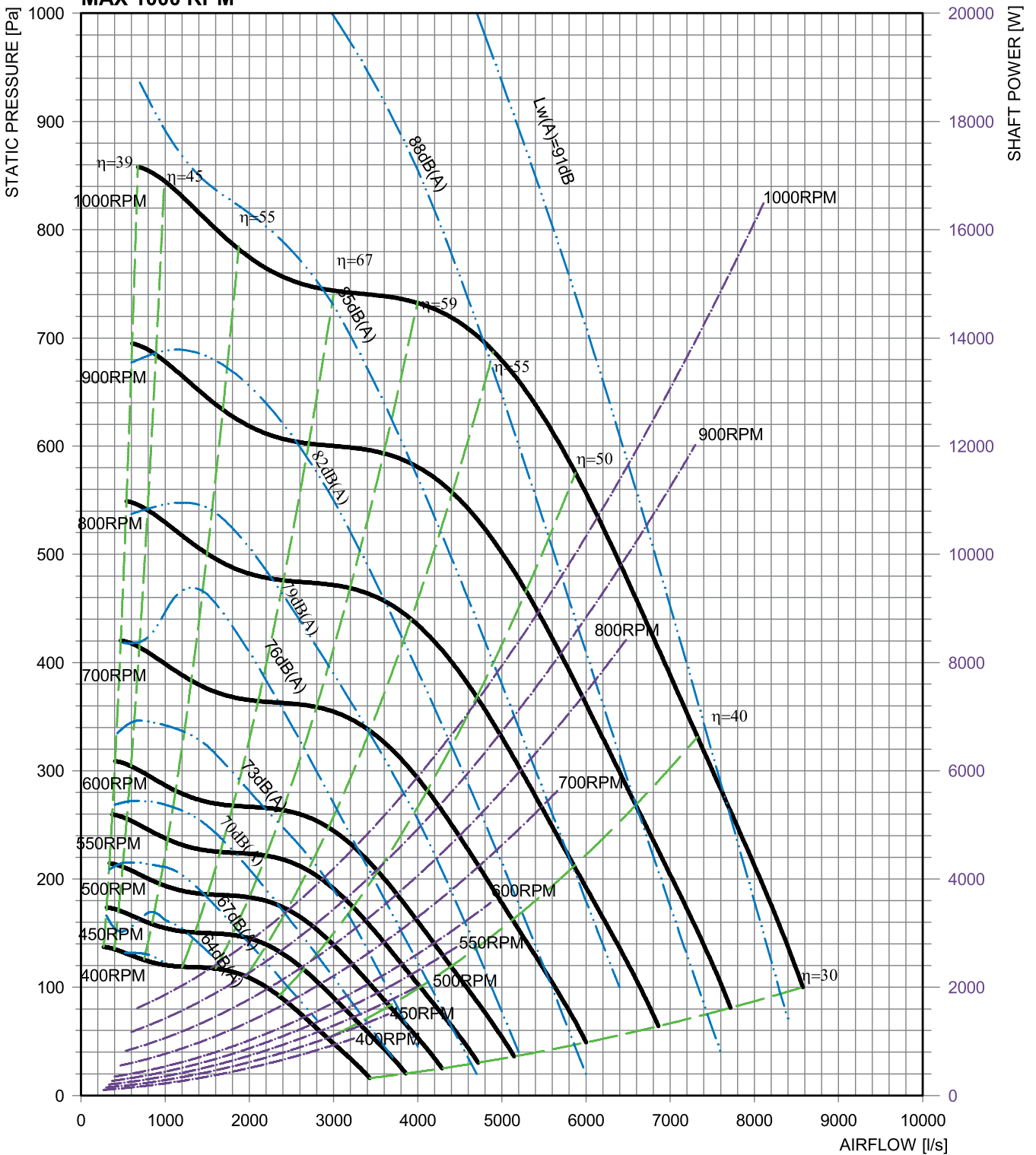
SHAFT DETAIL

		B	C	D
BC457-483-75	[mm]	ø25.00	8.00	4.20
		ø24.96	7.96	4.00

Note: Shaft - ø25.0mm uses 8mm x 7mm keyway



**DUCTED DISCHARGE
MAX 1000 RPM**





HEAD OFFICE

Regal Beloit Australia Pty Ltd ABN 61 122 303 084
19 Corporate Ave (PO Box 2340)
Rowville VIC 3178, AUSTRALIA
Customer Service: 1300 888 853
Fax: +61 3 9237 4050
www.regalaustralia.com.au

STATE OFFICES

VICTORIA

19 Corporate Avenue
Rowville VIC 3178
T: 1300 888 853
F: +61 3 9237 4050

NEW SOUTH WALES

8 Bushells Place
Wetherill Park NSW 2164
T: 1300 888 853

F: +61 2 8781 3131

QUEENSLAND

7 Mahogany Court
Willawong QLD 4110
T: 1300 888 853
F: +61 7 3246 3210
CAIRNS (Service • Repairs • Sales)
2/159-161 Newell Street
Bungalow QLD 4870
T: 1300 888 853
F: +61 7 4033 5553

PRESENT IN

MACKAY
SOUTH AUSTRALIA
WESTERN AUSTRALIA
T: 1300 888 853

NEW ZEALAND

Regal Beloit New Zealand Ltd
AUCKLAND
18 Jomac Place
Avondale
T: 0800 676 722
F: +64 9 820 8504

PRESENT IN

CHRISTCHURCH
ROTORUA
T: 0800 676 722

MALAYSIA

Torin Industries SND BHD (MALAYSIA)
No. 6536A Jalan Bukit Kemuning
Batu 6 Seksyen 34
40470 Shah Alam Selangor
T: +60 3 5124 6157
F: +60 3 5121 1467

SINGAPORE

Regal Beloit South East Asia Pte. Ltd.
12 Tuas Loop 637346
SINGAPORE
T: +65 6863 3473
F: +65 6863 3476

THAILAND

FASCO Motors (Thailand) Limited
29/7-8 Bangkruey-Sainoi Road
Bangkrang
Muang Nonthaburi District Nonthaburi 11000
THAILAND
T: +66 2447 3300
F: +66 2447 3500

APPLICATION CONSIDERATIONS

The proper selection and application air system products and components, including the related area of product safety, is the responsibility of the customer. Operating and performance requirements and potential associated issues will vary appreciably depending upon the use and application of such products and components. The scope of the technical and application information included in this publication is necessarily limited. Unusual operating environments and conditions, lubrication requirements, loading supports, and other factors can materially affect the application and operating results of the products and components and the customer should carefully review its requirements. Any technical advice or review furnished by Regal Beloit Australia Pty Ltd and its affiliates with respect to the use of products and components is given in good faith and without charge, and Regal assumes no obligation or liability for the advice given, or results obtained, all such advice and review being given and accepted at customer's risk.

For a copy of our Standard Terms and Conditions of Sale, Disclaimers of Warranty and Limitation of Liability, please contact Customer Service at 1300 888 853 or visit www.regalaustralia.com.au. These terms and conditions of sale, disclaimers and limitations of liability apply to any person who may buy, acquire or use a Regal Beloit Australia Pty Ltd product referred to herein, including any person who buys from a licensed distributor of these branded products.

REGAL[®]