

RLM EVO® PLUG FAN

MAXIMUM EFFICIENCY FOR VENTILATION AND AIR CONDITIONING



EXTREMELY ECONOMICAL AND QUIET

Fans must always reach ever higher system efficiencies. This means: more output with less energy. Binding requirements for this have been determined in the ErP Directive (Energy-related Products)

The new generation of Nicotra Gebhardt® fan modules already now reaches motor efficiencies up to IE5 – far beyond the specifications required in the future.

Put plainly, this means: using Nicotra Gebhardt fan modules equips you for the future today – so that you benefit in three ways: improved efficiency and lower energy costs – and product compliance with the standards of tomorrow.



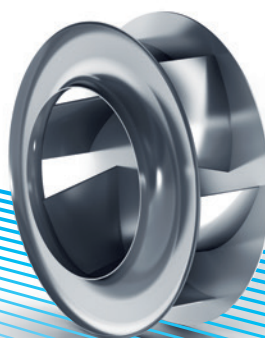
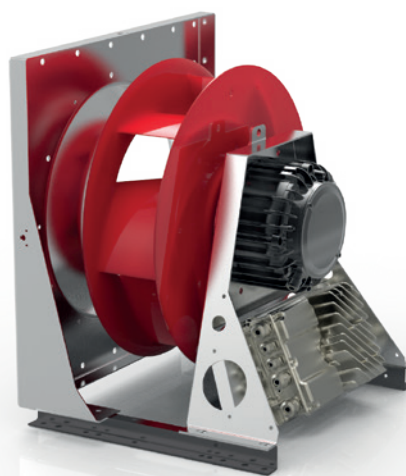
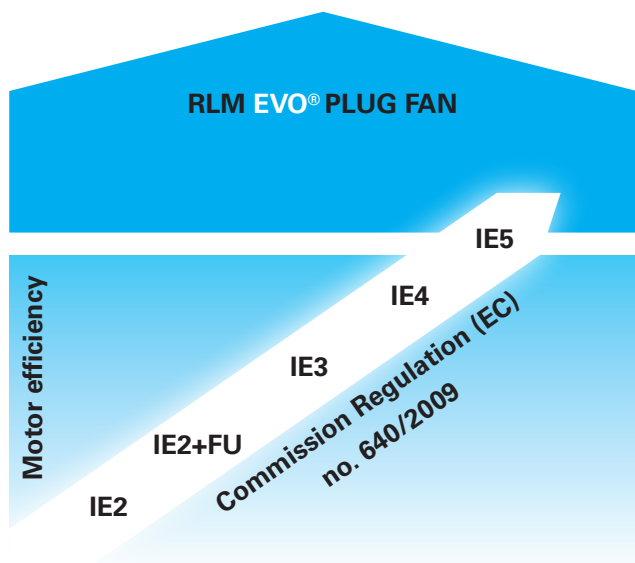
We have accelerated impeller technology with the Evo series, the new generation in our plug fan range. The result: more efficiency and reduced turbulent conditions. And that is highly effective as the Evo series ensures:

- lower energy consumptions
- lower costs
- lower noise levels

PROFESSIONALS IN PROFILING

Nicotra Gebhardt profiled impeller blades are the first choice of our customers. We brought the first hollow section airfoil blades onto the market in 1975. Since then, our products achieve among the highest efficiencies available across a broad range of applications.

Our engineers and technicians use the latest simulation programmes to develop and test new designs. You can rely on the knowledge and experience of our specialists.



THE PLUS FACTORS OF THE EVO GENERATION

- **Unparalleled system efficiency for plug fans**

The Evo series sets a new standard in efficiency. No other plug fan reaches higher system efficiency.

- **Innovative blade and impeller shaped for highest efficiencies**

The entire shape of the impeller was optimized using a real turbulence profile for the blades. This ensures that the impeller reaches as yet unparalleled high efficiency and takes the top position in aerodynamics.

- **Optimal pressure and turbulence conditions**

The re-designed impeller shape makes optimal pressure and minimized turbulence conditions in the impeller possible. The inclined leading edge of the blade builds pressure more evenly minimizing entry and exit losses.

- **Economical permanent magnet (EC) motors**

The permanent magnet and EC motors are significantly more economical and efficient than conventional drives. They reach efficiencies up to IE5 and lower the energy consumption of the fan by up to 50% in the partial load range.

- **Much quieter**

Thanks to their new design, the blades and the impeller run with less noise. The entire fan is thus much quieter.

- **Easy to integrate**

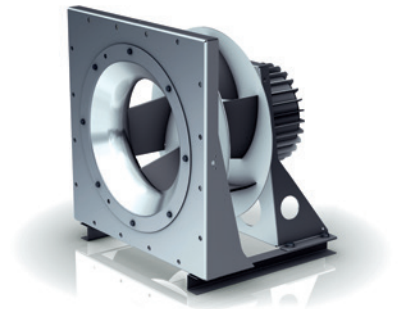
Despite their improved performance figures, the Evo series have the same external dimensions and significant operational data as earlier generations of plug fans. They can therefore be easily and quickly exchanged in existing systems or integrated in available machine concepts.

- **Easy maintenance**

Thanks to the construction method and direct drive the Evo series is practically maintenance-free.

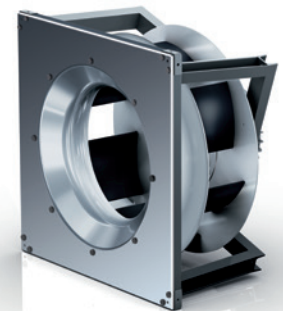
RLM EVO E6 SERIES FOR INSTALLATION IN AIR HANDLING UNITS

- | | | |
|--|--|---|
| <ul style="list-style-type: none">• Internal rotor motor efficiency grade IE5• Horizontal installation• Impeller size 280 – 900• Max. motor power 18kW• Controlled with integrated electronics | <ul style="list-style-type: none">• Internal rotor motor efficiency grade IE5• Horizontal installation• Impeller size 250 – 900• Max. motor power 18kW• Controlled with frequency inverter | <ul style="list-style-type: none">• Internal rotor motor efficiency grade IE3• Horizontal installation• Impeller size 280 – 1250• Max. motor power 45kW• Controlled with frequency inverter |
|--|--|---|



RLM EVO E3 SERIES FOR CEILING OR FLOOR INSTALLATION

- | | | |
|--|---|--|
| <ul style="list-style-type: none">• Internal rotor motor efficiency grade IE5• Vertical installation• Impeller size 280 – 710• Max. motor power 18kW• Controlled with integrated electronics | <ul style="list-style-type: none">• Internal rotor motor efficiency grade IE5• Vertical installation• Impeller size 280 – 710• Max. motor power 7,5kW• Controlled with frequency inverter | <ul style="list-style-type: none">• Internal rotor motor efficiency grade IE3• Vertical installation• Impeller size 280 – 710• Max. motor power 11kW• Controlled with frequency inverter |
|--|---|--|



WORLDWIDE LOCATIONS

NICOTRA-GEHARDT.COM

AUSTRALIA

65 Yale Drive,
Epping, VIC 3076
Phone +61 3 9017 5333
Fax +61 3 8401 3969
E-mail info@nicotra.com.au

BELGIUM

Allée des Artisan,18
4130 Esneux
Phone +32 (0)42288580
Fax +32 (0)42288580
E-mail info@nicotra.be

CHINA

88 Tai'An Road, XinQiao, ShiJi, Panyu
Guangzhou 511450
PR CHINA
Phone +86 (0)20-2293 5700
Fax +86 (0)20-2293 5701
E-mail sales@nicotra-china.com

FRANCE

Leader's Park Bat A1
3 chemin des Cytises
69340 Francheville
Phone +33 (0)4 72 79 01 20
Fax +33 (0)4 72 79 01 21
E-mail ngfrance@nicotra-gebhardt.com

GERMANY

Gebhardtstraße 19-25
74638 Waldenburg
Phone +49 (0)7942 101 0
Fax +49 (0)7942 101 170
E-mail info.ng.de@regalbeloit.com

GREAT BRITAIN

Unit D, Rail Mill Way
Parkgate Business Park
Rotherham
South Yorkshire
S62 6JQ
Phone +044 01709-780760
Fax +044 01709-780762
E-mail sales@nicotra.co.uk

INDIA

Plot no 28F & 29, Sector-31,Kasna,
Greater Noida-201 308 U.P (India)
Phone +91 120 4783400
Phone +91 22 65702056 (Mumbai)
Phone +91 80 25727830 (Bangalore)
E-mail info@nicotraindia.com

ITALY

Via Modena, 18
24040 Zingonia (BG)
Phone +39 035 873 111
Fax +39 035 884 319
E-mail info@nicotra-gebhardt.com

MALAYSIA

Lot 1799, Jalan Balakong
Taman Perindustrian Bukit Belimbing
43300 Seri Kembangan
Selangor
Phone +603 8961-2588
Fax +603 8961-8337
E-mail info_malaysia@nicotra-gebhardt.com

SPAIN

C/ Jamaica, 5
Apdo. Correos 5077
28806 Alcalá de Henares
Phone +34 918-846110
Fax +34 918-859450
E-mail info.es@nicotra-gebhardt.com

SINGAPORE

12 Tuas Loop
Singapore 637346
Tel: +65 6863 3473
Fax: +65 6863 3476
E-mail info_singapore@nicotra-gebhardt.com

SWEDEN

Box 237
Krakatorpsgatan 30
43153 Mölndal
Phone +46 (0)311302610
E-mail info.se@nicotra-gebhardt.com

THAILAND

6/29 Soi Suksawadi 2, Moo 4, Suksawadi Road,
Kwang Jomthong, Khet Jomthong,
Bangkok 10150
Phone +662 476-1823-6
Fax +662 476-1827
E-mail sales@nicotra.co.th

United States (USA)

Regal Beloit America, Inc.
200 State Street
Beloit, WI 53511
Mobile +1 608 224 9967
E-mail drew.donahue@regalbeloit.com

NICOTRA|Gebhardt®

Nicotra Gebhardt Germany

Nicotra Gebhardt GmbH
Gebhardtstraße 19-25
74638 Waldenburg (Germany)
Phone +49 7942 1010
Fax +49 7942 101 170
E-mail info.ng.de@regalbeloit.com
Web: www.nicotra-gebhardt.com

Nicotra Gebhardt Italy

Nicotra Gebhardt S.p.A
Via Modena, 18
24040 Zingonia (BG) (Italy)
Phone +39 035 873 111
Fax +39 035 884 319
E-mail info@nicotra-gebhardt.com
Web: www.nicotra-gebhardt.com

APPLICATION CONSIDERATIONS

The proper selection and application of power transmission products and components, including the related area of product safety, is the responsibility of the customer. Operating and performance requirements and potential associated issues will vary appreciably depending upon the use and application of such products and components. The scope of the technical and application information included in this publication is necessarily limited. Unusual operating environments and conditions, lubrication requirements, loading supports, and other factors can materially affect the application and operating results of the products and components and the customer should carefully review its requirements. Any technical advice or review furnished by Regal Beloit America, Inc. and/or its affiliates ("Regal") with respect to the use of products and components is given in good faith and without charge, and Regal assumes no obligation or liability for the advice given, or results obtained, all such advice and review being given and accepted at customer's risk.

For a copy of our Standard Terms and Conditions of Sale, please visit <http://www.regalbeloit.com> (please see link at bottom of page to "Standard Terms and Conditions of Sale"). These terms and conditions of sale, disclaimers and limitations of liability apply to any person who may buy, acquire or use a Regal product referred to herein, including any person who buys from a licensed distributor of these branded products.

Regal, Nicotra Gebhardt and RLM Evo are trademarks of Regal Beloit Corporation or one of its affiliated companies.

© 2018 Regal Beloit Corporation, All Rights Reserved. MCB18063E • Form# 10235E

REGAL®