

**FASCO**<sup>®</sup>



**Belt Drive Blower  
Double Inlet Forward Curve Centrifugal Blowers  
Twin Belt Drive**

A Regal Brand

**REGAL**

“We convert power into motion to help the world run more efficiently”

BUSINESS PURPOSE

## ABOUT US

Regal Beloit Corporation is a leading manufacturer of electric motors, mechanical and electrical motion controls and power generation products serving markets throughout the world. Regal Beloit is headquartered in Beloit, Wisconsin, and has manufacturing, sales and service facilities throughout the United States, Canada, Mexico, Europe and Asia.

Regal Air Systems brings together the strength and experience of three of Australia’s leading manufacturers of air moving products for the HVAC industry. FASCO, Australian Fan & Motor Co (AFMC) and Torin are now in a position to offer industry an unparalleled range of products under the Regal Air Systems banner.

Our products are efficient and innovative; they conform to Australian design, performance and engineering standards. Regal Australia sources products from Regal manufacturing facilities and represents some of the world’s leading industrial manufactures.

Regal Australia embraces the company core values of Integrity, High Energy and Performance and has adopted the initiatives of customer care, globalization, innovation, sustainability and simplification.

Our company business statement is that “We convert power into motion to help the world run more efficiently” has direct lineage to our core values and initiatives.

### REGAL

### OUR CORE VALUES



#### Integrity

We are a company that is honest, trustworthy, candid, transparent and fair.

#### High Energy

Our culture promotes a strong work ethic with high energy teams fostering a culture of inclusion and respect for all.

#### Performance

Everyone is expected to perform and our stakeholders count on us to execute, meet commitments and continuously improve.

### REGAL

### OUR INITIATIVES



#### Customer Care

Our future depends on the success of our customers. We will establish closer relationships with our customers, actively listen to their feedback and respond with a sense of urgency.



#### Globalization

We want to be global for three reasons. First, we want to participate in high growth markets around the world. Second, many of our customers are global and we want to serve customers where they do business. Finally, we want to utilize our global capabilities to seek out the best talent and to remain globally competitive.



#### Innovation

We will build the future of the Company on products that are new and needed. While we accept that with an innovation headset comes a certain degree of risk, we are committed to investing in new products, technologies and processes that deliver real value to our customers.



#### Sustainability

The long term sustainability of our Company requires not only continuous growth and profitability, but also that we take personal responsibility for the impact we have on our planet, and for the fair and just treatment of the people we employ.



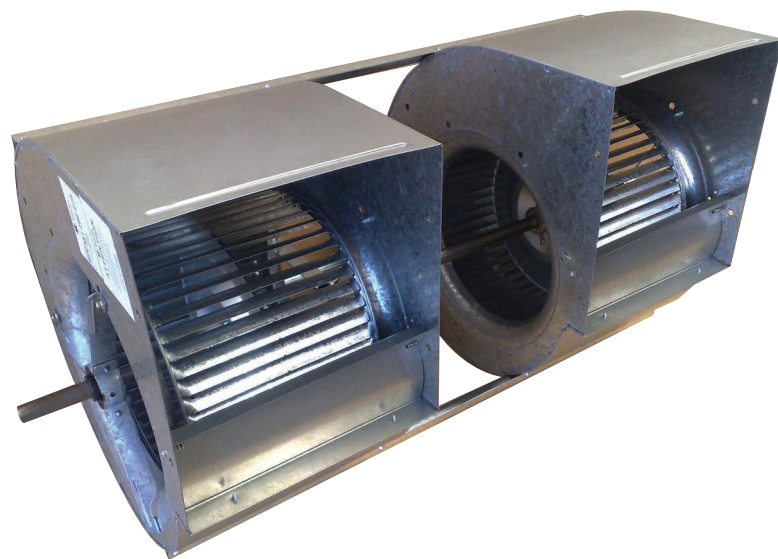
#### Simplification

Complexity is a serious disadvantage in business. We aim to simplify every aspect of our operations to eliminate complexities in order to increase our speed, improve our flexibility and reduce our costs.

# Belt Drive Blower Double Inlet Forward Curve Centrifugal Blowers

## Twin Belt Drive

	PAGE
<b>INTRODUCTION</b>	<b>2</b>
Company Overview	
<b>PRODUCT DESCRIPTION, APPLICATIONS</b>	<b>4</b>
<b>HOW TO SELECT</b>	<b>5</b>
<b>TWIN BELT DRIVE</b>	<b>6 - 23</b>
9" x 7" .....	6 - 7
9" x 9" .....	8 - 9
10" x 8" .....	10 - 11
10" x 10" .....	12 - 13
12" x 9" .....	14 - 15
12" x 12" .....	16 - 17
15" x 11" .....	18 - 19
15" x 15" .....	20 - 21
18" x 19" .....	22 - 23



# Belt Drive Fan Decks - Forward Curve

## Double Inlet

### DESCRIPTION

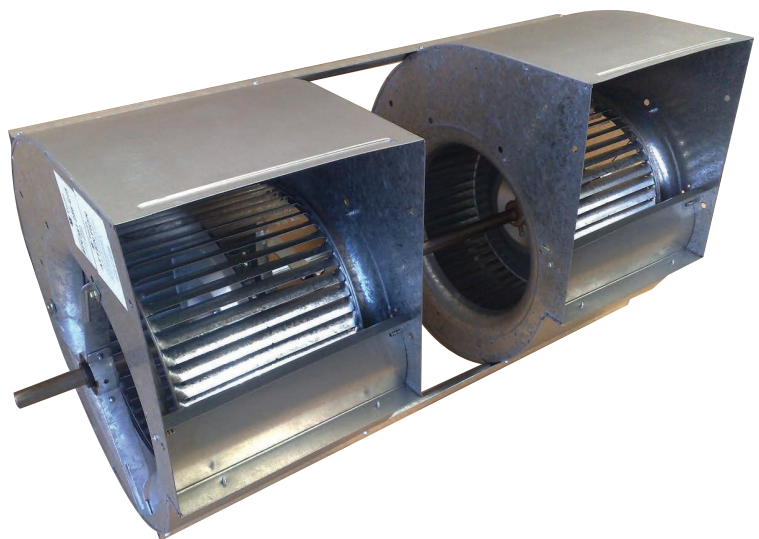
The BPC range of forward curved Double Width Double Inlet twin blowers from TORIN are manufactured with wheel diameters from 241mm (9 inch) to 457mm (18 inch) and can deliver air volumes of up to 16000L/S.

Housings and wheels are manufactured from galvanised steel, wheels are forward curve design with inserted blades, hubs are available with 1 inch or 25mm bores.

Accessories – housing support brackets or mounting feet are available separately for each blower size.

### APPLICATIONS

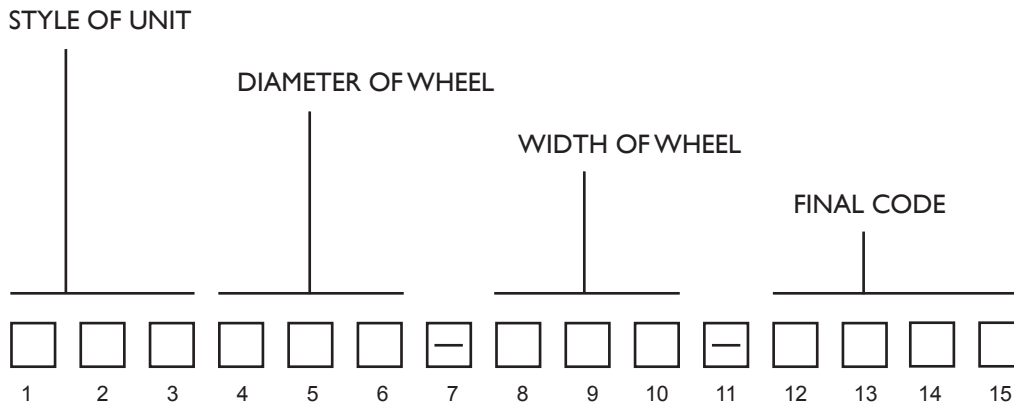
Air handling units, fan coil units, evaporative condensers, cooling towers, air conditioning units, general ventilation.



# BPC - HOW TO SELECT

When placing an order the part number should be specified.  
The product description is composed in accordance with the following example:

## BASIC OUTLINE OF CODE



## DETAILS OF CODE:

1	<input type="checkbox"/>	TYPE OF DRIVE	B = Belt
2	<input type="checkbox"/>	CONFIGURATION	P = Pair of housings
3	<input type="checkbox"/>	WHEEL TYPE	C = Inserted Blade (CR)
4 5 6	<input type="checkbox"/> <input type="checkbox"/> <input type="checkbox"/>	WHEEL DIAMETER	In Millimetres
7	<input type="checkbox"/>	DASH	
8 9 10	<input type="checkbox"/> <input type="checkbox"/> <input type="checkbox"/>	WHEEL WIDTH	In Millimetres
11	<input type="checkbox"/>	DASH	
12 13 14 15	<input type="checkbox"/> <input type="checkbox"/> <input type="checkbox"/> <input type="checkbox"/>	FINAL CODE	Refer Chart Below For Shaft Configuration
		16A	Ø1" Standard[a/c]
		75A	25mm Standard[a/c]
		16C	Ø1" Standard[c/w]
		75C	25mm Standard[c/w]

## EXAMPLE OF CODE

BPC381-381-75A

BPC381-381-75C

# TWIN BELT DRIVE

## 9"x7" STANDARD DUTY

### BPC241-181-XXX



#### APPLICATIONS

Air handling units, fan coil units, evaporative condensers, cooling towers, air conditioning units, general ventilation.

#### HOUSING

Galvanised steel

#### WHEEL

Galvanised steel

#### WEIGHT

14.0 Kg

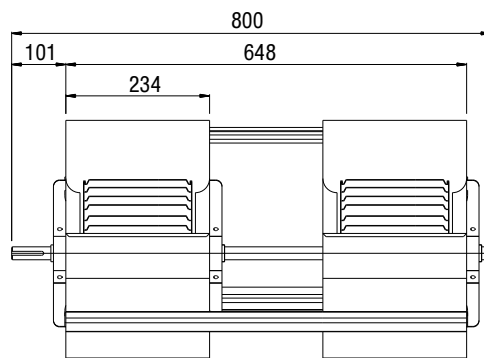
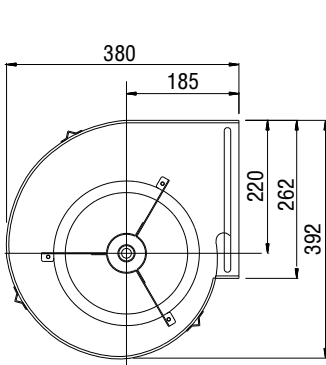
#### SHAFT

Bright mild steel

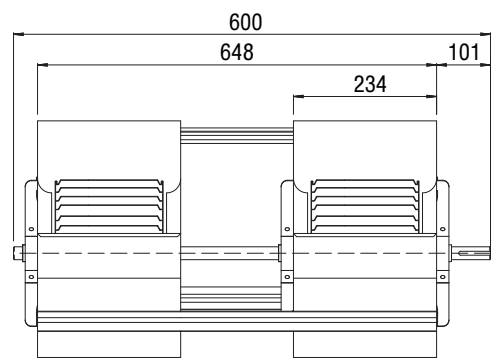
#### ACCESSORIES

Purchased separately as required.  
Housing Support Bracket kit with grommets and screws  
P/No. KH054-241

### DIMENSIONS



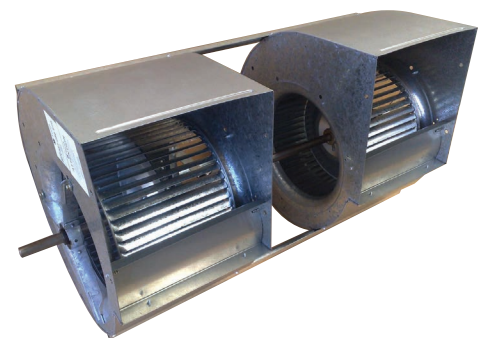
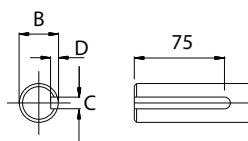
Part No. BPC241-181-16C  
BPC241-181-75C



Part No. BPC241-181-16A  
BPC241-181-75A

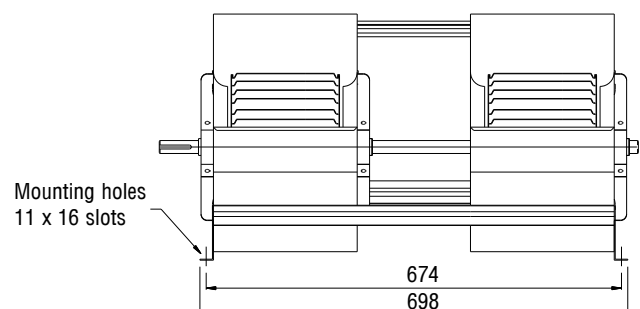
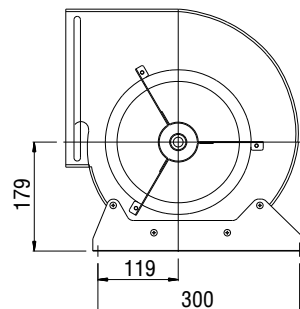
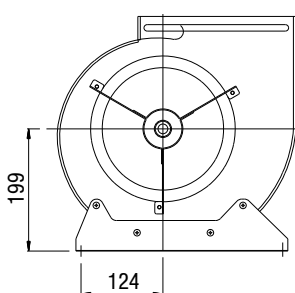
### SHAFT DETAIL

Part No.	B	C	D
[in] BPC241-181-16C & - 16A	Ø25.40	6.35	3.75
	Ø25.35	6.33	3.60
[mm] BPC241-181-75C & - 75A	Ø25.00	8.00	4.20
	Ø24.96	7.96	4.00



NOTE:  
1. Imperial Shaft - 1.0" uses 1/4" x 1/4" Keyway  
2. Metric Shaft - Ø25.0mm uses 8mm x 7mm Keyway

### DISCHARGE POSITIONS

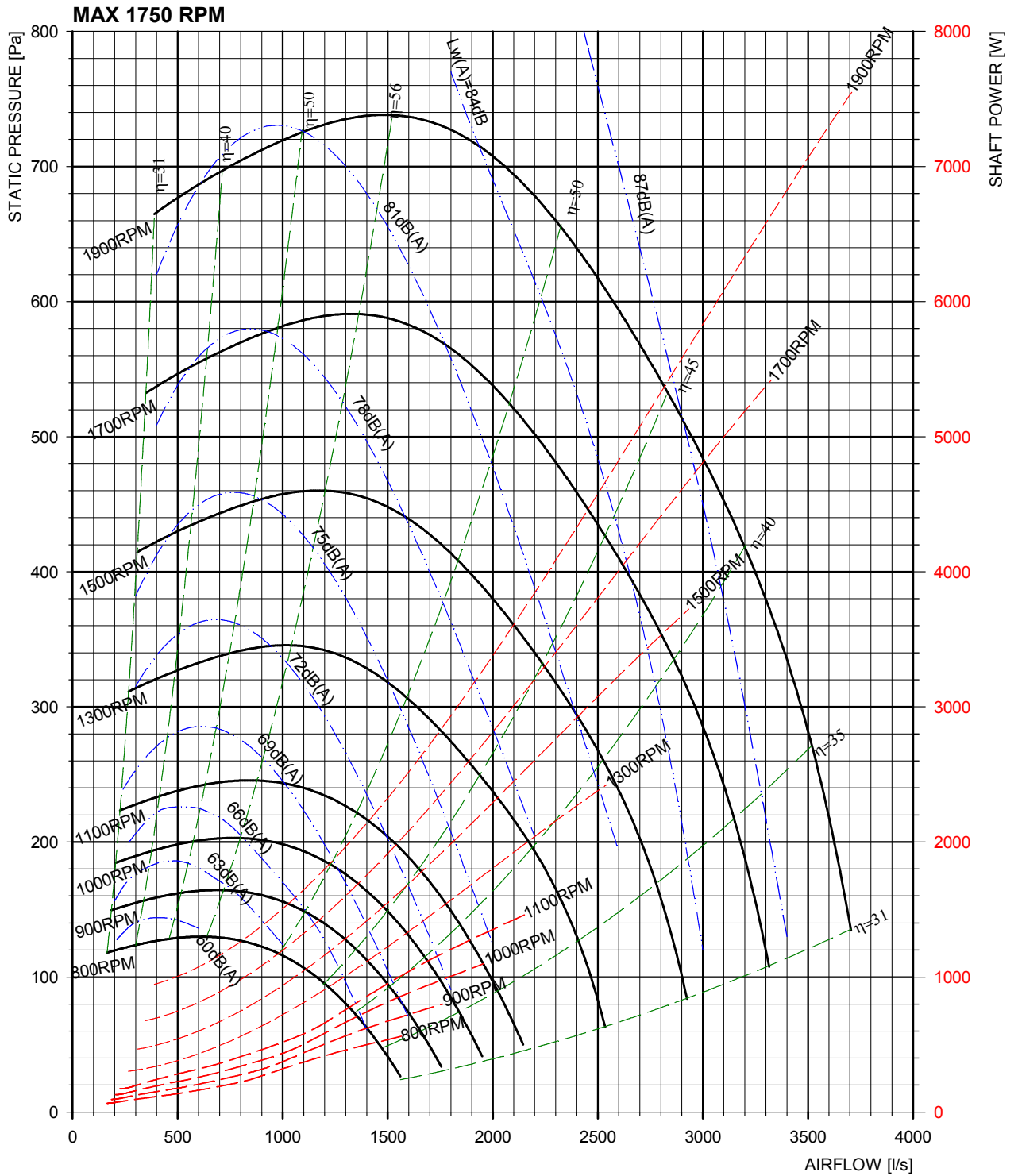




# TWIN BELT DRIVE

## 9"x7" STANDARD DUTY

### DUCTED DISCHARGE



# TWIN BELT DRIVE

## 9"x9" STANDARD DUTY

### BPC241-241-XXX



#### APPLICATIONS

Air handling units, fan coil units, evaporative condensers, cooling towers, air conditioning units, general ventilation.

#### HOUSING

Galvanised steel

#### WHEEL

Galvanised steel

#### WEIGHT

15.5 Kg

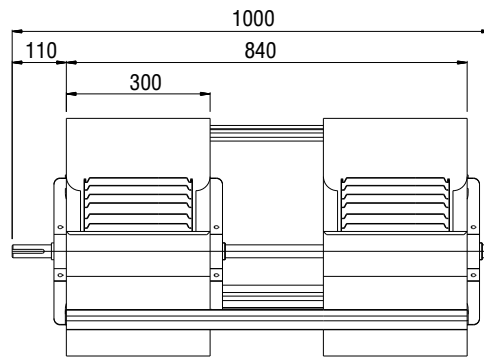
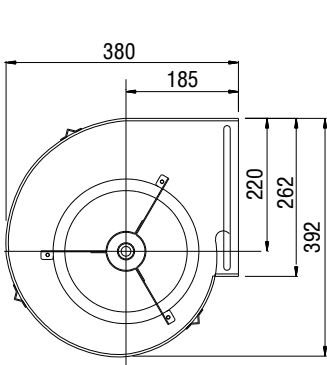
#### SHAFT

Bright mild steel

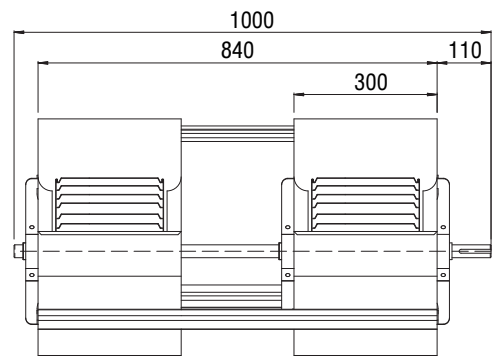
#### ACCESSORIES

Purchased separately as required.  
Housing Support Bracket kit with grommets and screws  
P/No. KH054-241

### DIMENSIONS



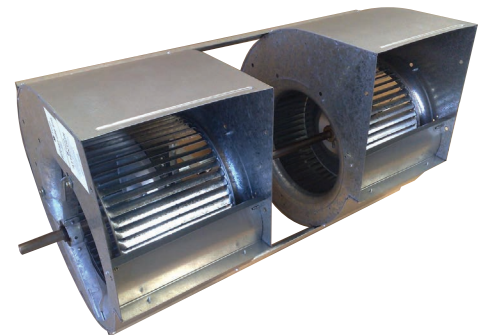
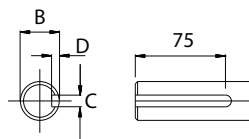
Part No. BPC241-241-16C  
BPC241-241-75C



Part No. BPC241-241-16A  
BPC241-241-75A

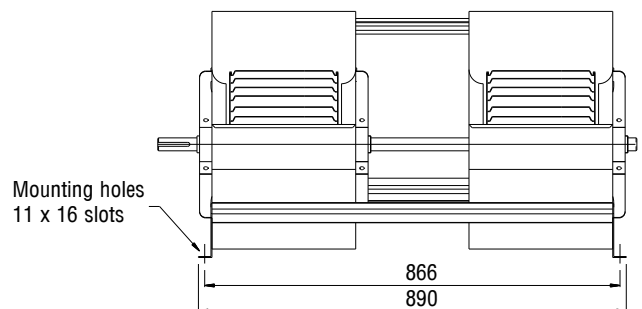
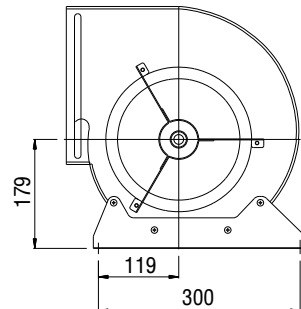
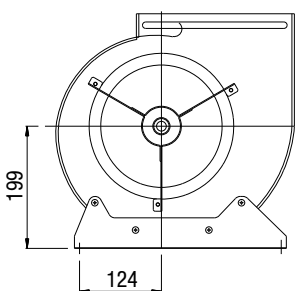
### SHAFT DETAIL

Part No.	B	C	D
[in] BPC241-241-16C & - 16A	Ø25.40	6.35	3.75
	Ø25.35	6.33	3.60
[mm] BPC241-241-75C & - 75A	Ø25.00	8.00	4.20
	Ø24.96	7.96	4.00



NOTE:  
1. Imperial Shaft - 1.0" uses 1/4" x 1/4" Keyway  
2. Metric Shaft - Ø25.0mm uses 8mm x 7mm Keyway

### DISCHARGE POSITIONS

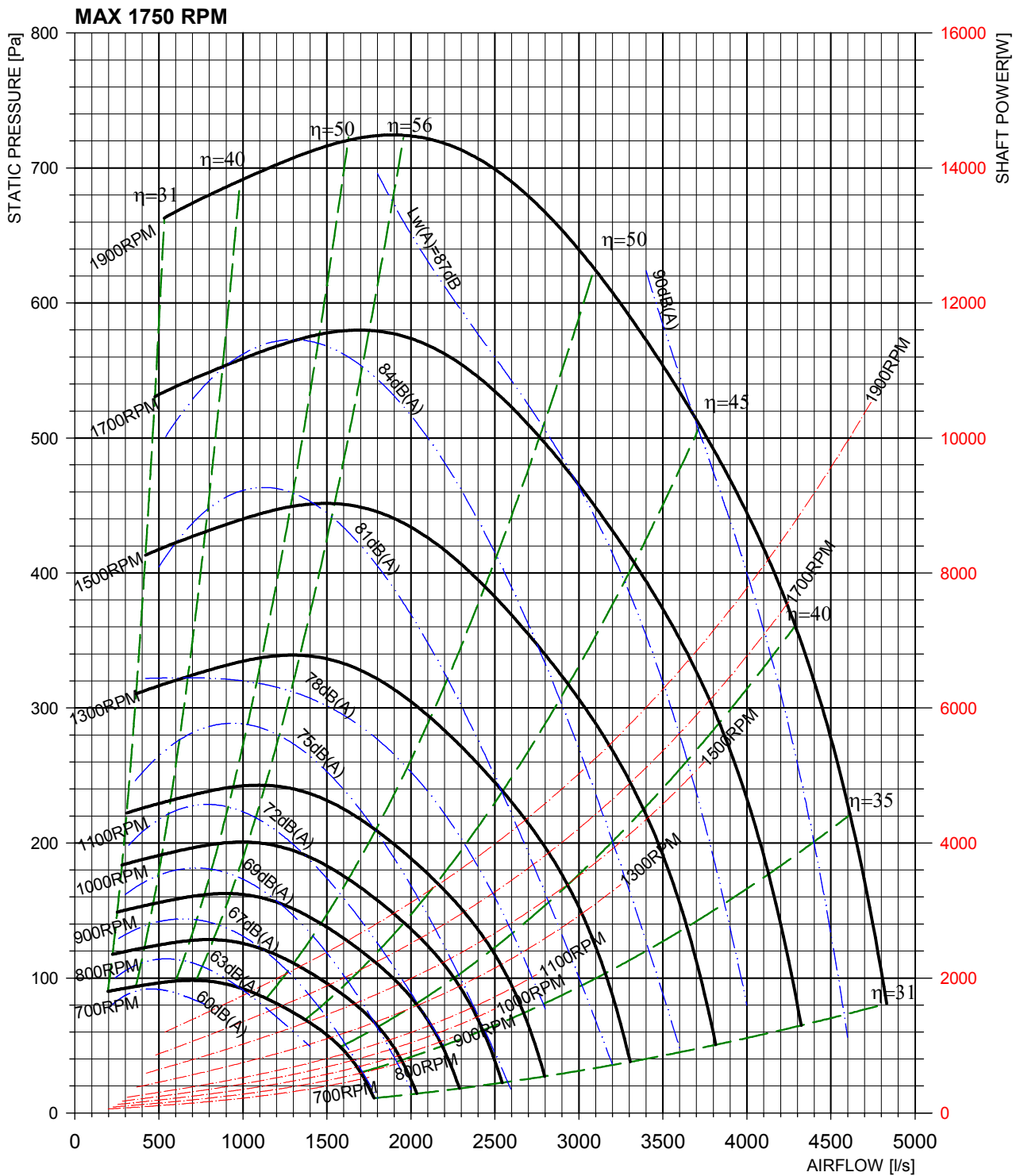




# TWIN BELT DRIVE

## 9"x9" STANDARD DUTY

### DUCTED DISCHARGE



# TWIN BELT DRIVE

## 10"x8" STANDARD DUTY

### BPC270-203-XXX



#### APPLICATIONS

Air handling units, fan coil units, evaporative condensers, cooling towers, air conditioning units, general ventilation.

#### HOUSING

Galvanised steel

#### WHEEL

Galvanised steel

#### WEIGHT

18.0 Kg

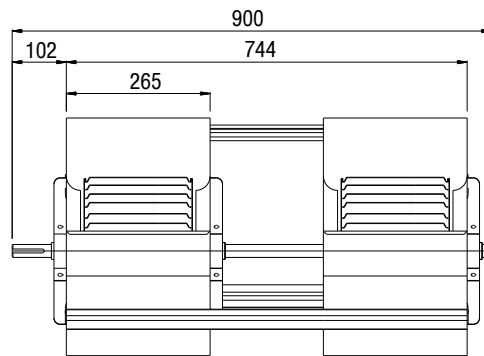
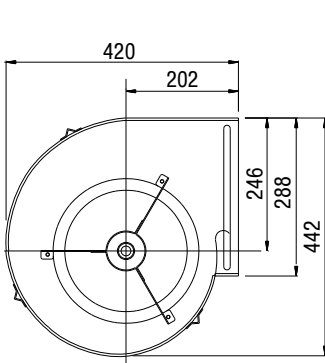
#### SHAFT

Bright mild steel

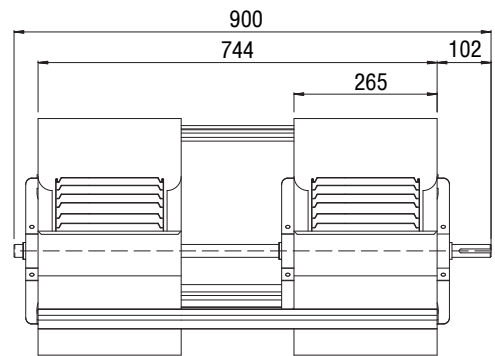
#### ACCESSORIES

Purchased separately as required.  
Housing Support Bracket kit with grommets and screws  
P/No. KH054-241

### DIMENSIONS



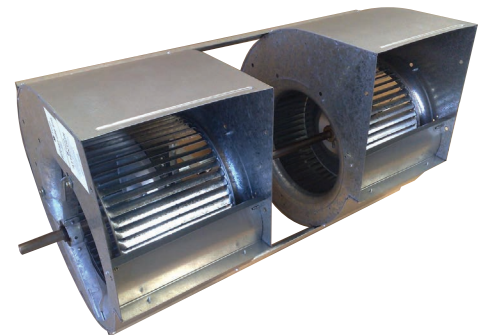
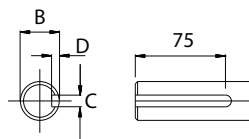
Part No. BPC270-203-16C  
BPC270-203-75C



Part No. BPC270-203-16A  
BPC270-203-75A

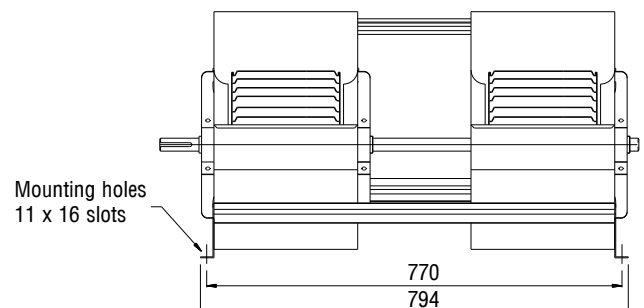
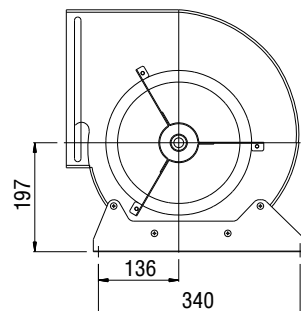
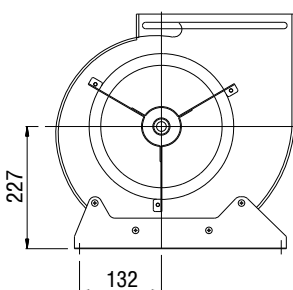
### SHAFT DETAIL

Part No.	B	C	D
[in] BPC270-203-16C & - 16A	Ø25.40	6.35	3.75
	Ø25.35	6.33	3.60
[mm] BPC270-203-75C & - 75A	Ø25.00	8.00	4.20
	Ø24.96	7.96	4.00



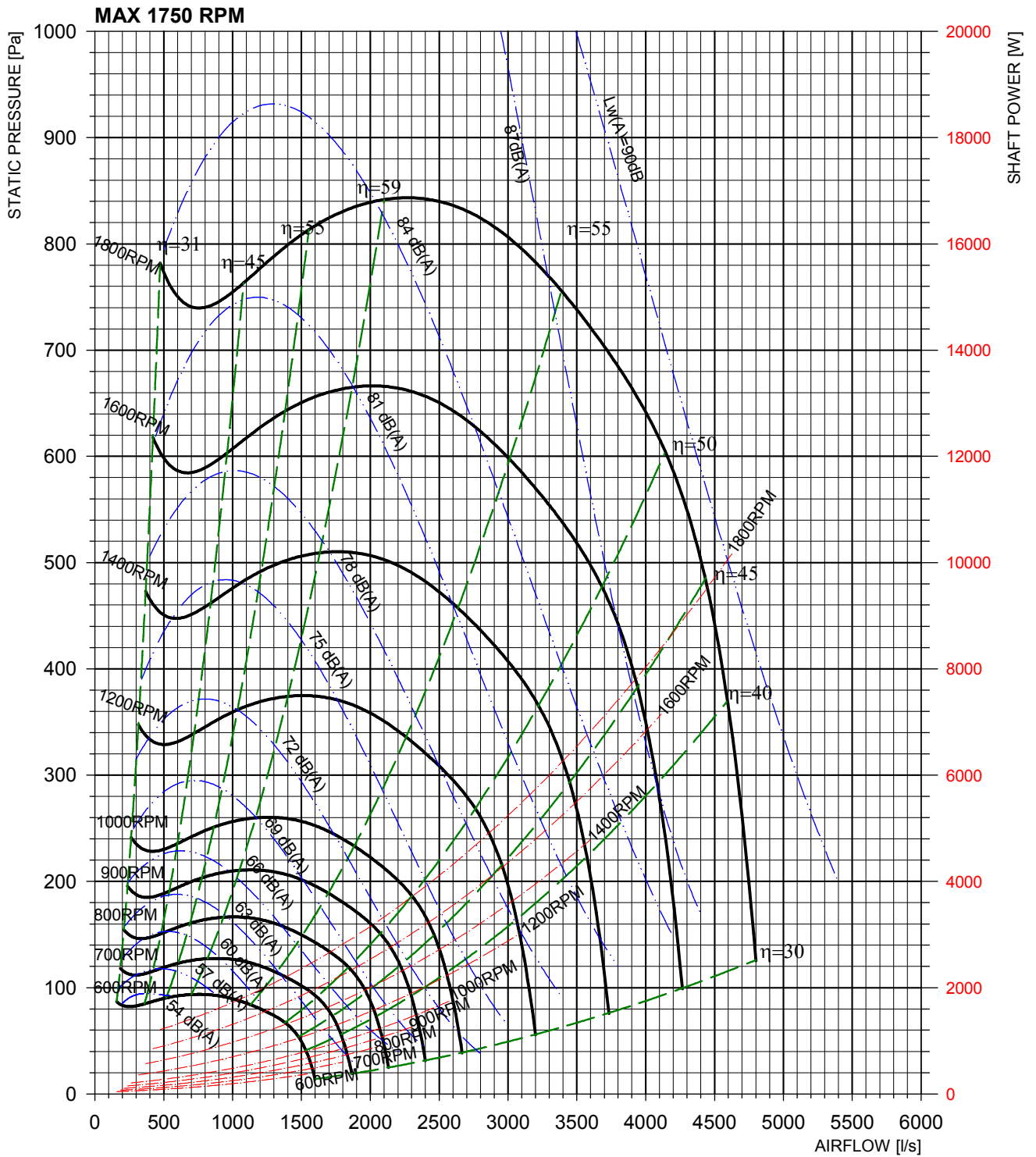
NOTE:  
1. Imperial Shaft - 1.0" uses 1/4" x 1/4" Keyway  
2. Metric Shaft - Ø25.0mm uses 8mm x 7mm Keyway

### DISCHARGE POSITIONS



# TWIN BELT DRIVE 10"x8" STANDARD DUTY

## DUCTED DISCHARGE



# TWIN BELT DRIVE

## 10" x 10" STANDARD DUTY

### BPC270-270-XXX



#### APPLICATIONS

Air handling units, fan coil units, evaporative condensers, cooling towers, air conditioning units, general ventilation.

#### HOUSING

Galvanised steel

#### WHEEL

Galvanised steel

#### WEIGHT

20.0 Kg

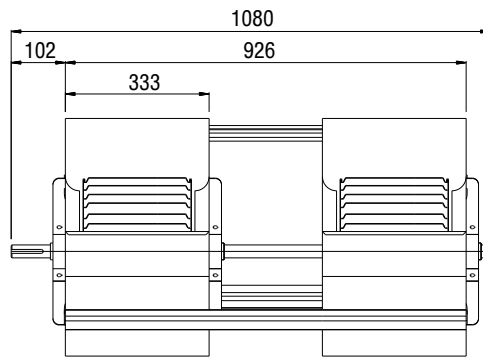
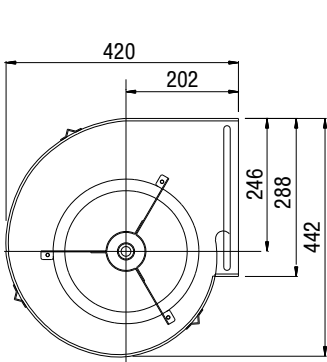
#### SHAFT

Bright mild steel

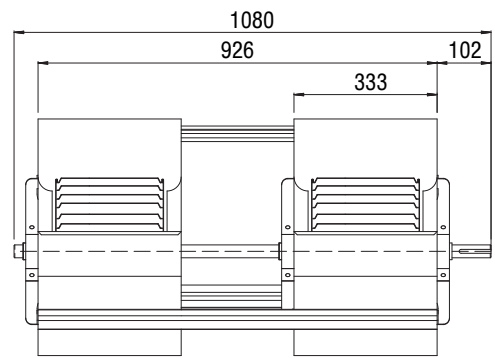
#### ACCESSORIES

Purchased separately as required.  
Housing Support Bracket kit with grommets and screws  
P/No. KH054-241

### DIMENSIONS



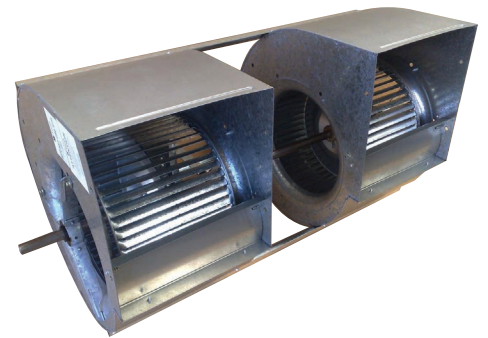
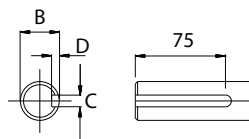
Part No. BPC270-270-16C  
BPC270-270-75C



Part No. BPC270-270-16A  
BPC270-270-75A

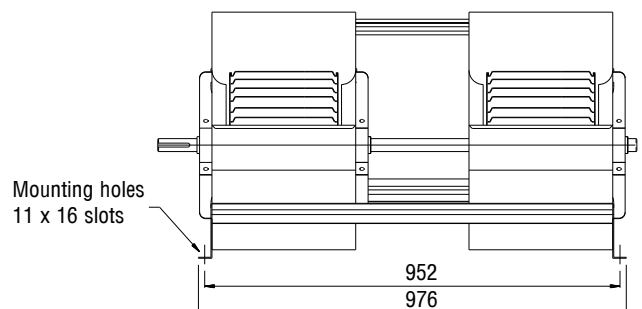
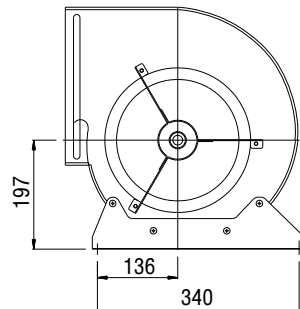
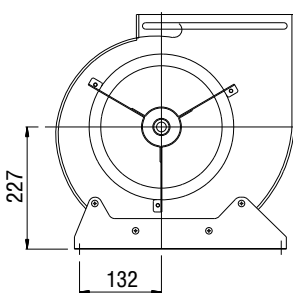
### SHAFT DETAIL

Part No.	B	C	D
[in] BPC270-270-16C & - 16A	Ø25.40	6.35	3.75
	Ø25.35	6.33	3.60
[mm] BPC270-270-75C & - 75A	Ø25.00	8.00	4.20
	Ø24.96	7.96	4.00



NOTE:  
1. Imperial Shaft - 1.0" uses 1/4" x 1/4" Keyway  
2. Metric Shaft - Ø25.0mm uses 8mm x 7mm Keyway

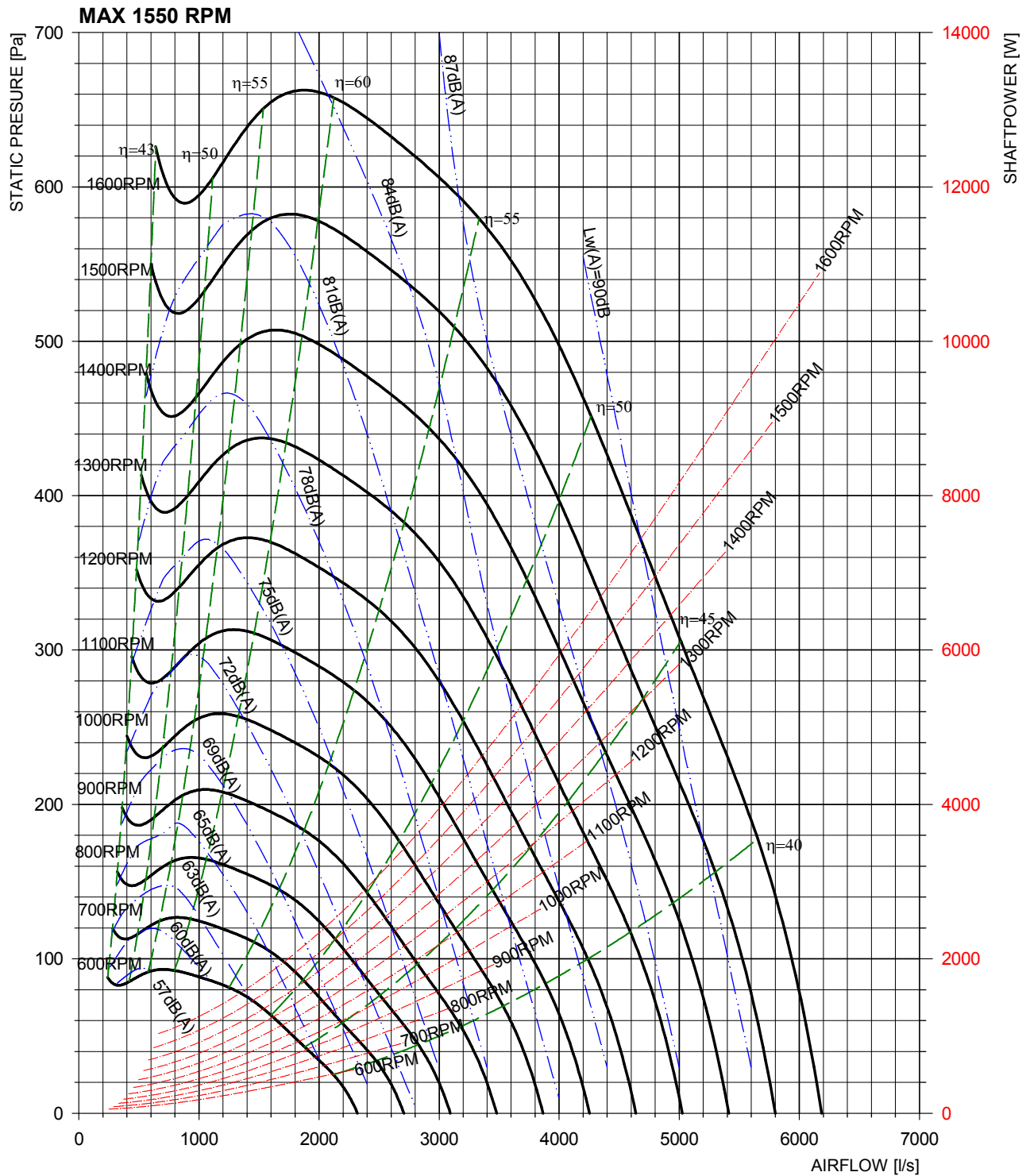
### DISCHARGE POSITIONS



# TWIN BELT DRIVE

## 10"x10" STANDARD DUTY

### DUCTED DISCHARGE



# TWIN BELT DRIVE

## 12"x9" STANDARD DUTY

### BPC321-241-XXX



#### APPLICATIONS

Air handling units, fan coil units, evaporative condensers, cooling towers, air conditioning units, general ventilation.

#### HOUSING

Galvanised steel

#### WHEEL

Galvanised steel

#### WEIGHT

25.0 Kg

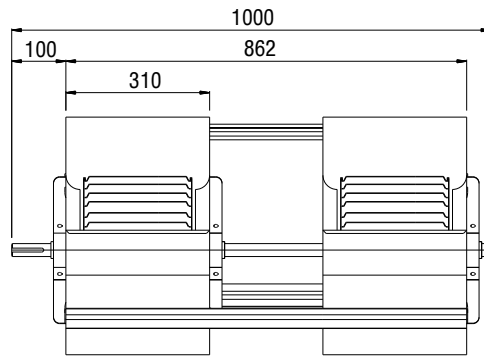
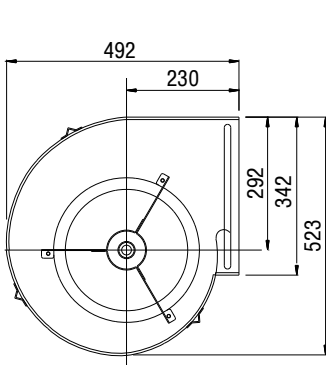
#### SHAFT

Bright mild steel

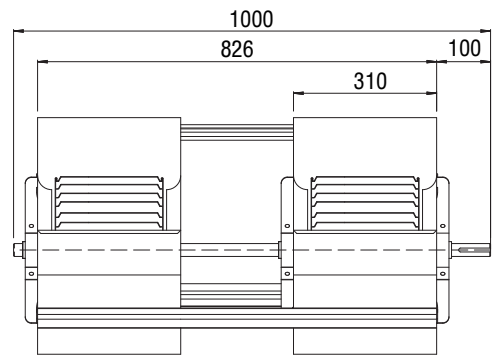
#### ACCESSORIES

Purchased separately as required.  
Housing Support Bracket kit with grommets and screws  
P/No. KH054-241

### DIMENSIONS



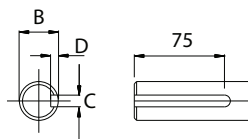
Part No. BPC321-241-16C  
BPC321-241-75C



Part No. BPC321-241-16A  
BPC321-241-75A

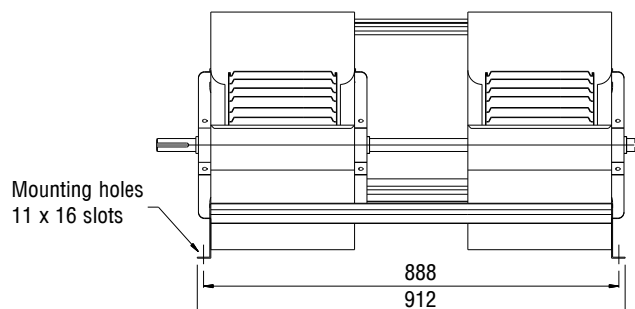
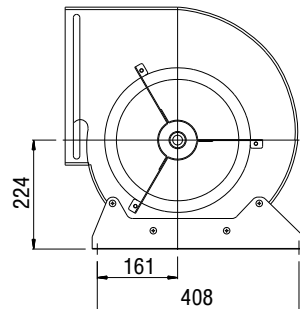
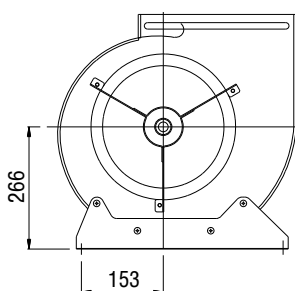
### SHAFT DETAIL

Part No.	B	C	D
[in] BPC321-241-16C & - 16A	Ø25.40	6.35	3.75
	Ø25.35	6.33	3.60
[mm] BPC321-241-75C & - 75A	Ø25.00	8.00	4.20
	Ø24.96	7.96	4.00



NOTE:  
1. Imperial Shaft - 1.0" uses 1/4" x 1/4" Keyway  
2. Metric Shaft - Ø25.0mm uses 8mm x 7mm Keyway

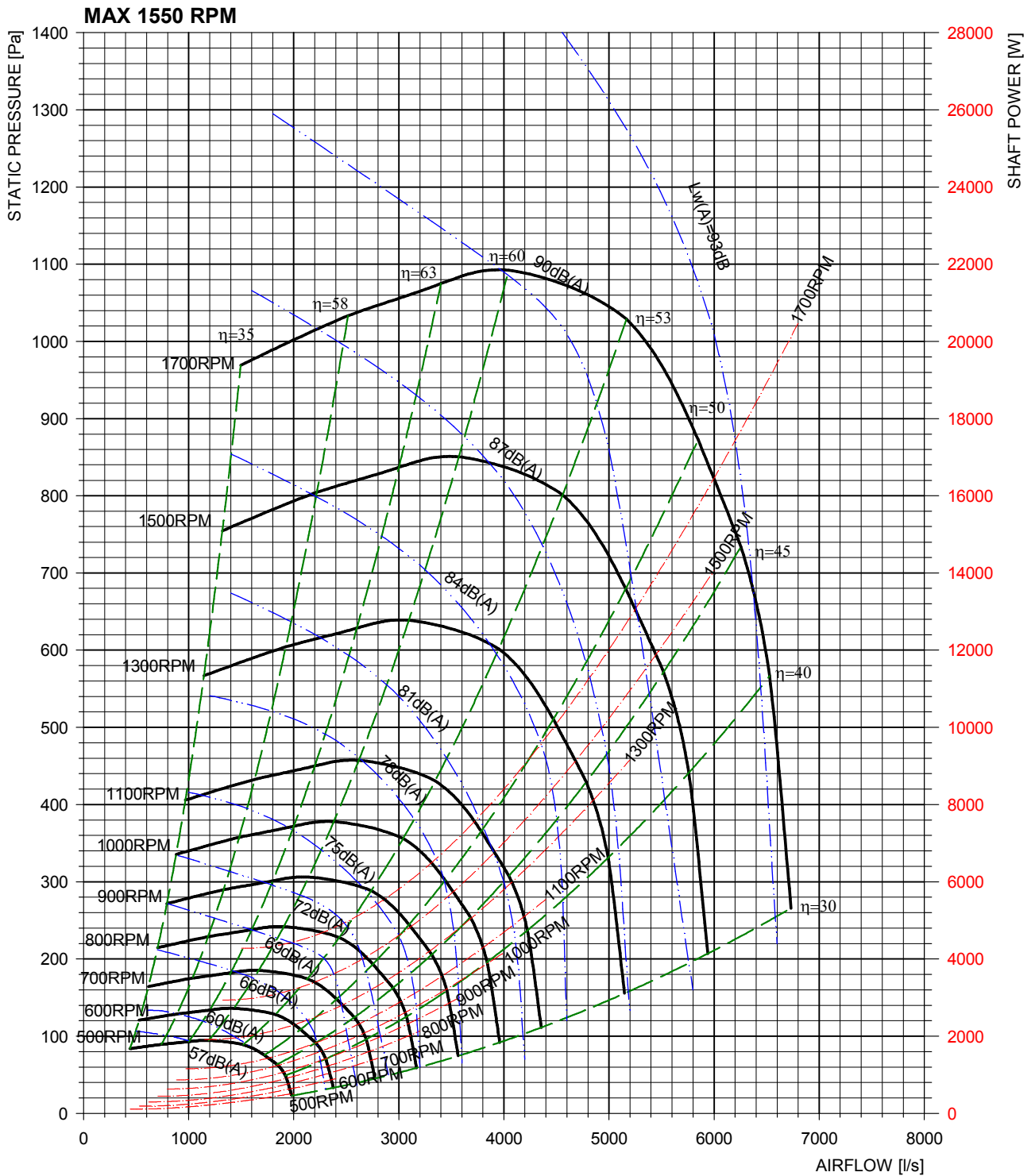
### DISCHARGE POSITIONS





# TWIN BELT DRIVE 12"x9" STANDARD DUTY

## DUCTED DISCHARGE



# TWIN BELT DRIVE

## 12"x12" STANDARD DUTY

### BPC321-321-XXX



#### APPLICATIONS

Air handling units, fan coil units, evaporative condensers, cooling towers, air conditioning units, general ventilation.

#### HOUSING

Galvanised steel

#### WHEEL

Galvanised steel

#### WEIGHT

28.0 Kg

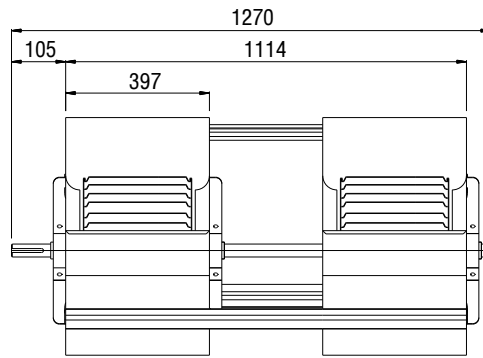
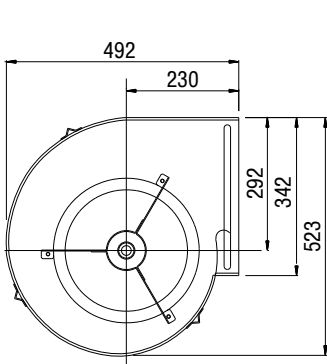
#### SHAFT

Bright mild steel

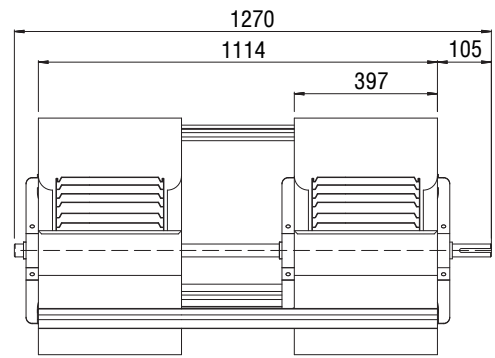
#### ACCESSORIES

Purchased separately as required.  
Housing Support Bracket kit with grommets and screws  
P/No. KH054-241

### DIMENSIONS



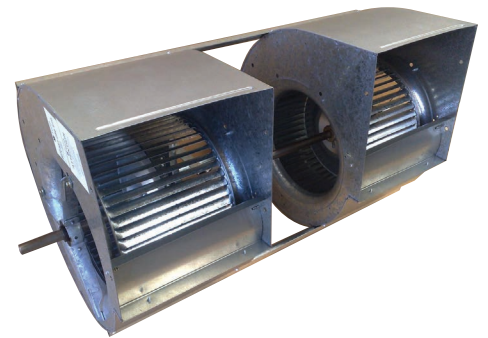
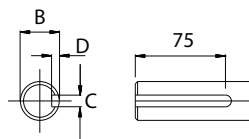
Part No. BPC321-321-16C  
BPC321-321-75C



Part No. BPC321-321-16A  
BPC321-321-75A

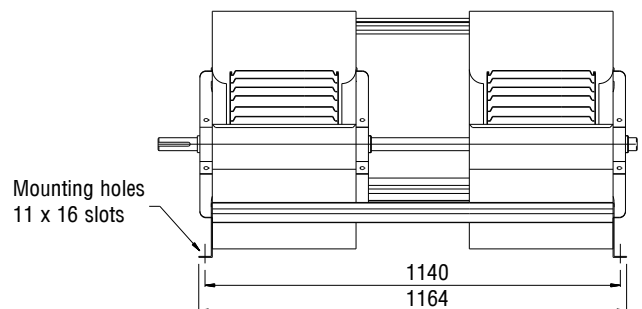
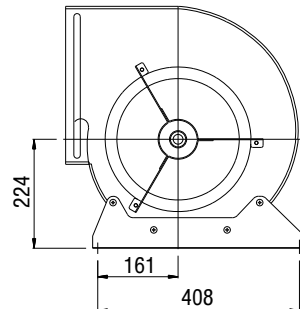
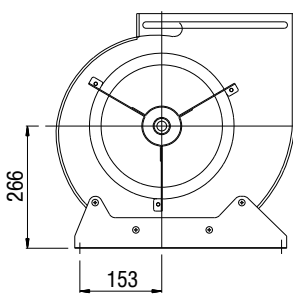
### SHAFT DETAIL

Part No.	B	C	D
[in] BPC321-321-16C & - 16A	Ø25.40	6.35	3.75
	Ø25.35	6.33	3.60
[mm] BPC321-321-75C & - 75A	Ø25.00	8.00	4.20
	Ø24.96	7.96	4.00



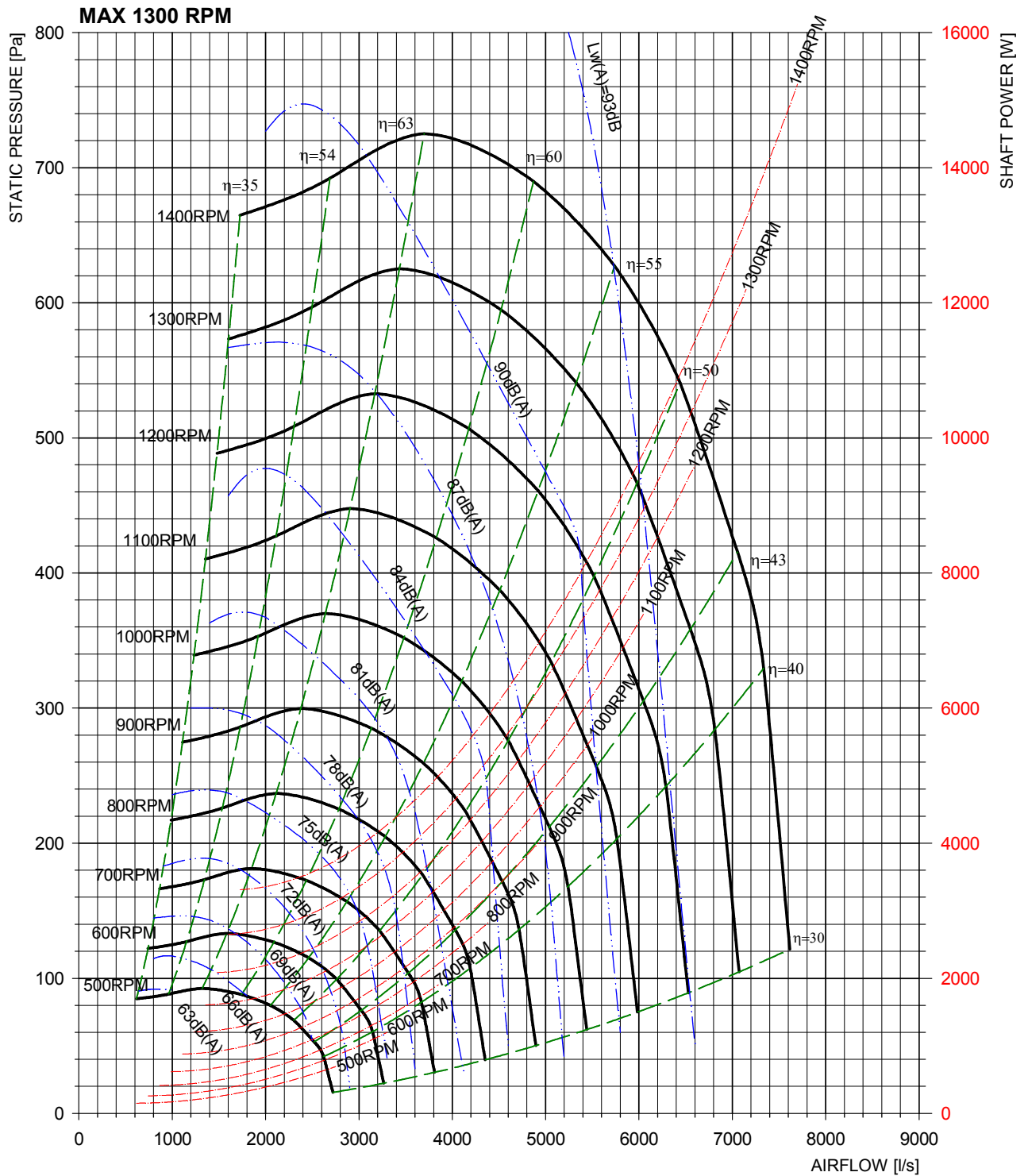
NOTE:  
1. Imperial Shaft - 1.0" uses 1/4" x 1/4" Keyway  
2. Metric Shaft - Ø25.0mm uses 8mm x 7mm Keyway

### DISCHARGE POSITIONS



# TWIN BELT DRIVE 12"x12" STANDARD DUTY

## DUCTED DISCHARGE



# TWIN BELT DRIVE

## 15"x11" STANDARD DUTY

### BPC381-286-XXX



#### APPLICATIONS

Air handling units, fan coil units, evaporative condensers, cooling towers, air conditioning units, general ventilation.

#### HOUSING

Galvanised steel

#### WHEEL

Galvanised steel

#### WEIGHT

36.0 Kg

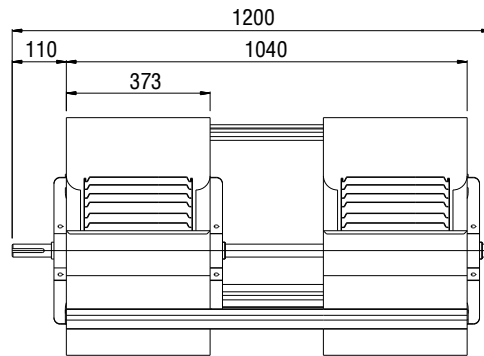
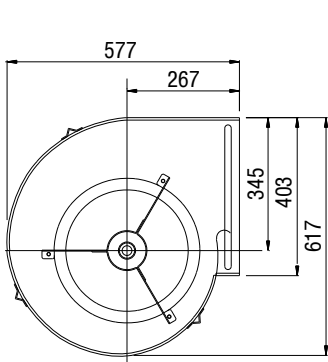
#### SHAFT

Bright mild steel

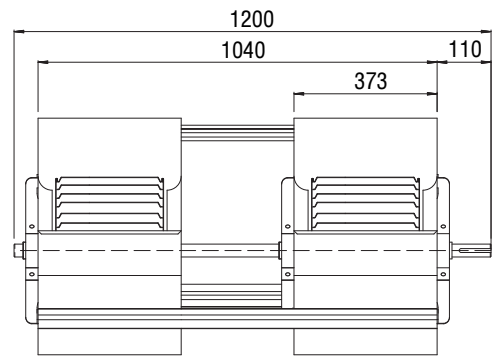
#### ACCESSORIES

Purchased separately as required.  
Housing Support Bracket kit with grommets and screws  
P/No. KH054-241

### DIMENSIONS



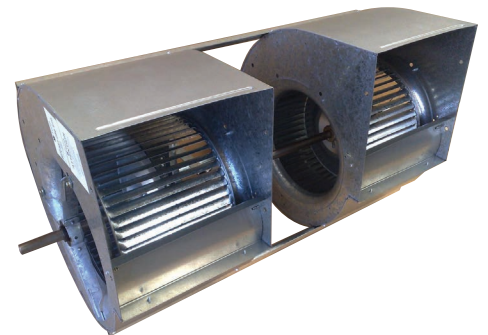
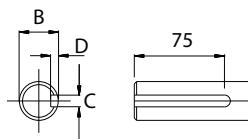
Part No. BPC381-286-16C  
BPC381-286-75C



Part No. BPC381-286-16A  
BPC381-286-75A

### SHAFT DETAIL

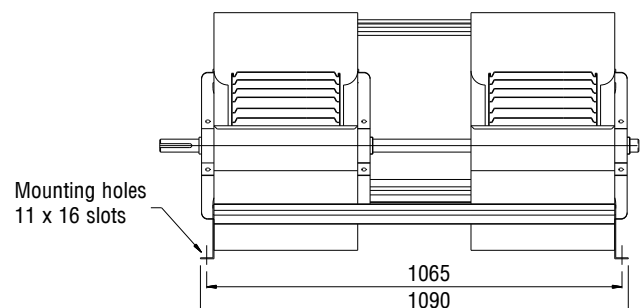
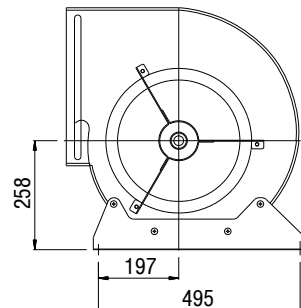
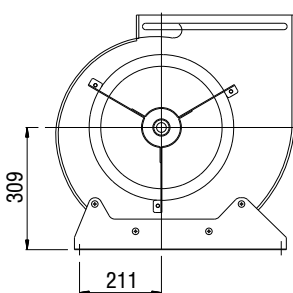
Part No.	B	C	D
[in] BPC381-286-16C & - 16A	Ø25.40	6.35	3.75
	Ø25.35	6.33	3.60
[mm] BPC381-286-75C & - 75A	Ø25.00	8.00	4.20
	Ø24.96	7.96	4.00



#### NOTE:

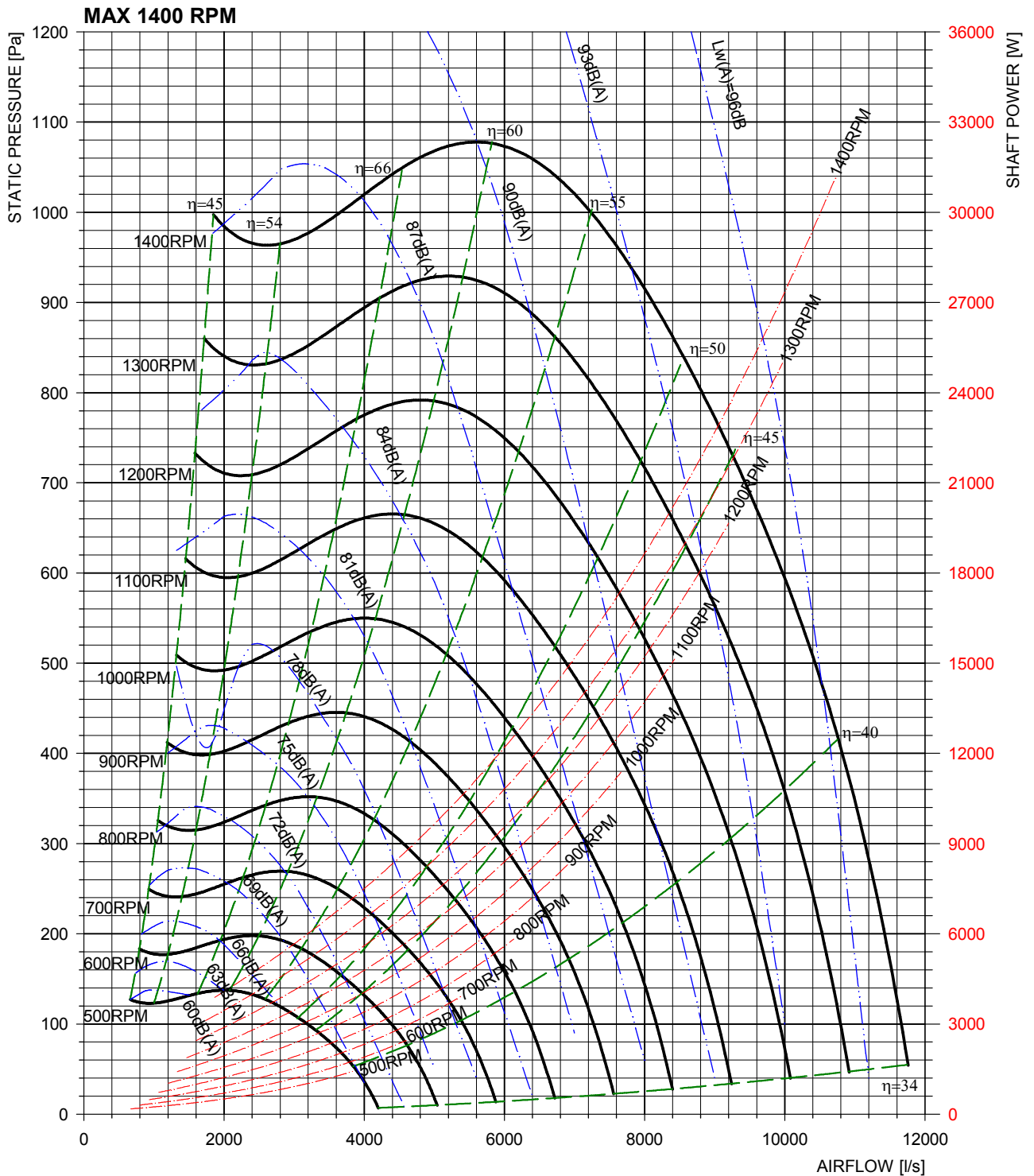
- Imperial Shaft - 1.0" uses 1/4" x 1/4" Keyway
- Metric Shaft - Ø25.0mm uses 8mm x 7mm Keyway

### DISCHARGE POSITIONS



# TWIN BELT DRIVE 15"x11" STANDARD DUTY

## DUCTED DISCHARGE



# TWIN BELT DRIVE

## 15" x 15" STANDARD DUTY

### BPC381-381-XXX



#### APPLICATIONS

Air handling units, fan coil units, evaporative condensers, cooling towers, air conditioning units, general ventilation.

#### HOUSING

Galvanised steel

#### WHEEL

Galvanised steel

#### WEIGHT

42.5 Kg

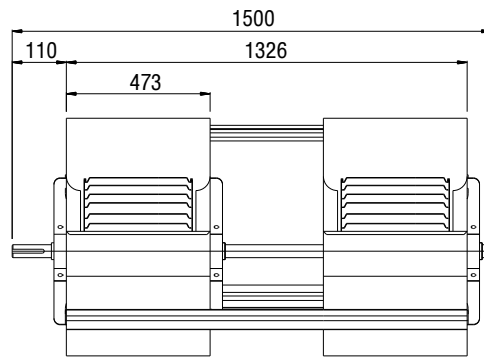
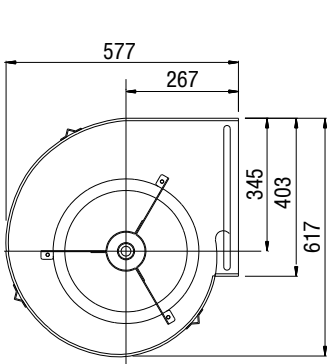
#### SHAFT

Bright mild steel

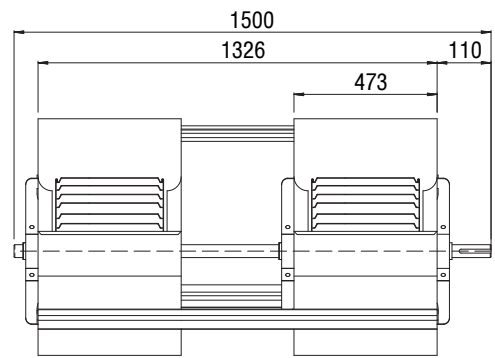
#### ACCESSORIES

Purchased separately as required.  
Housing Support Bracket kit with grommets and screws  
P/No. KH054-241

### DIMENSIONS



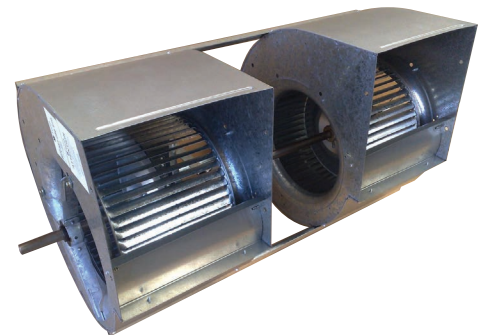
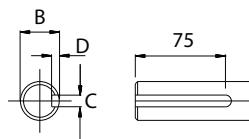
Part No. BPC381-381-16C  
BPC381-381-75C



Part No. BPC381-381-16A  
BPC381-381-75A

### SHAFT DETAIL

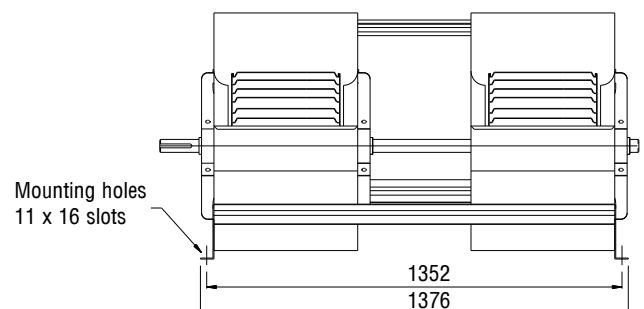
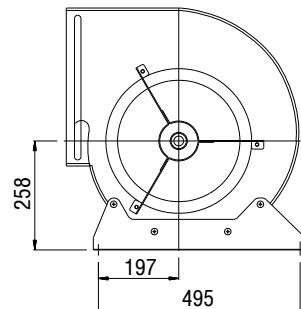
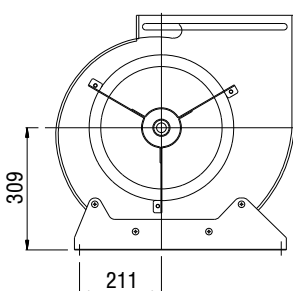
Part No.	B	C	D
[in] BPC381-381-16C & - 16A	Ø25.40	6.35	3.75
	Ø25.35	6.33	3.60
[mm] BPC381-381-75C & - 75A	Ø25.00	8.00	4.20
	Ø24.96	7.96	4.00



#### NOTE:

- Imperial Shaft - 1.0" uses 1/4" x 1/4" Keyway
- Metric Shaft - Ø25.0mm uses 8mm x 7mm Keyway

### DISCHARGE POSITIONS

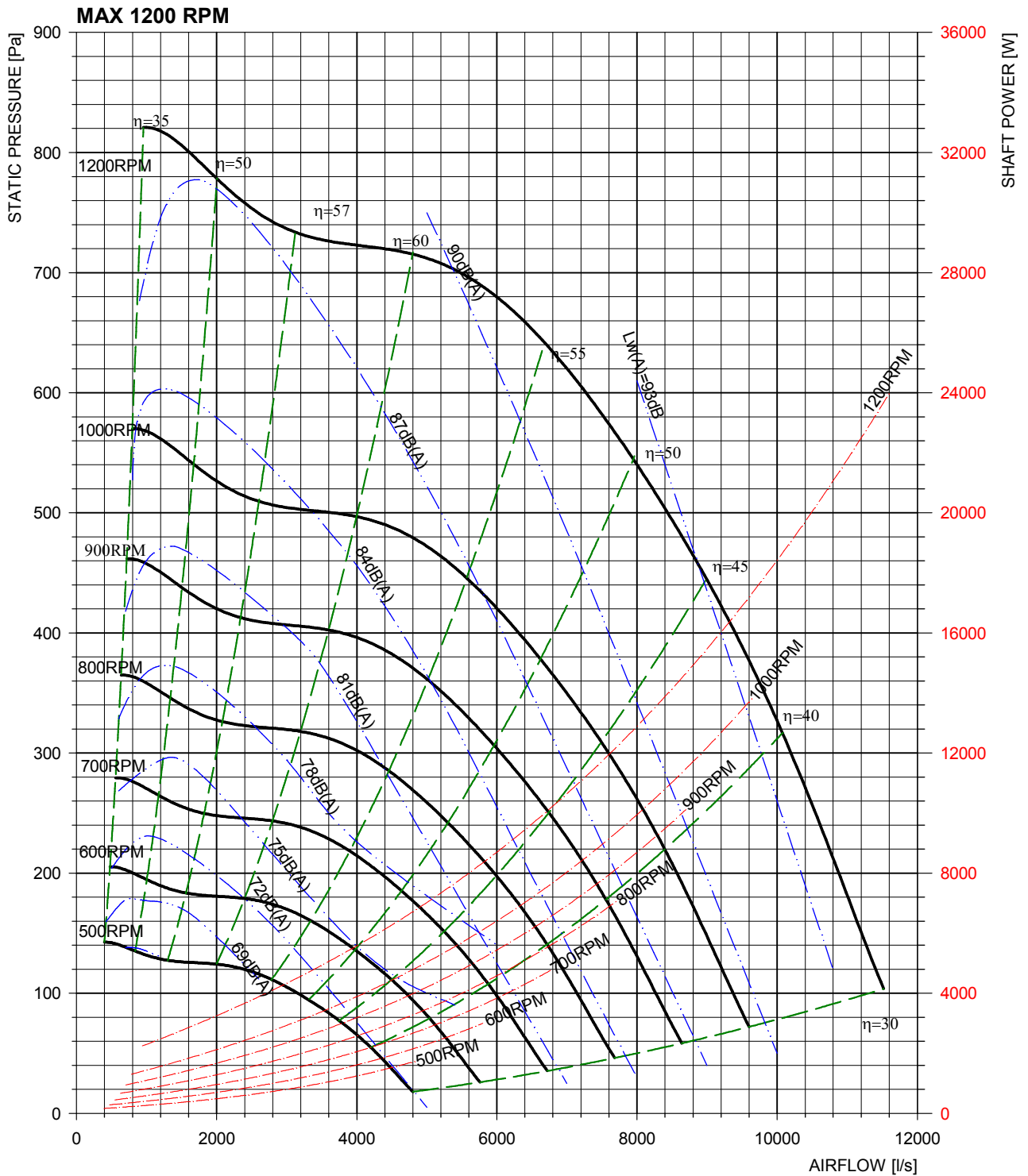




# TWIN BELT DRIVE

## 15"x15" STANDARD DUTY

### DUCTED DISCHARGE



# TWIN BELT DRIVE

## 18"x19" STANDARD DUTY

### BPC457-483-XXX



#### APPLICATIONS

Air handling units, fan coil units, evaporative condensers, cooling towers, air conditioning units, general ventilation.

#### HOUSING

Galvanised steel

#### WHEEL

Galvanised steel

#### WEIGHT

59.0 Kg

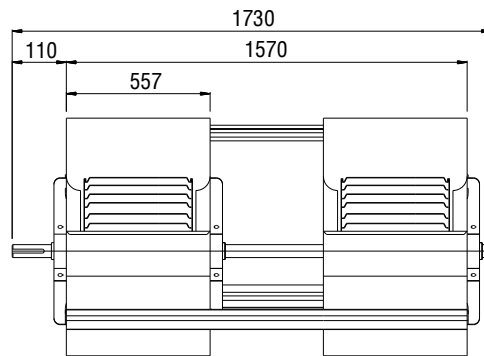
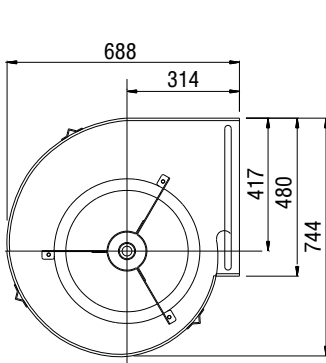
#### SHAFT

Bright mild steel

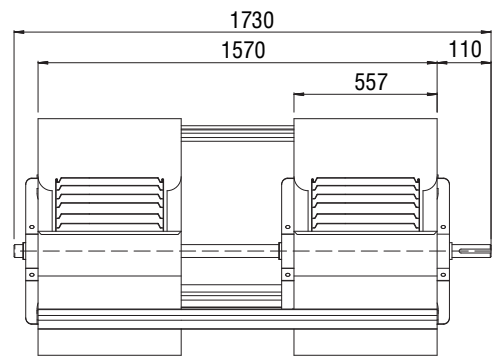
#### ACCESSORIES

Purchased separately as required.  
Housing Support Bracket kit with grommets and screws  
P/No. KH054-241

### DIMENSIONS



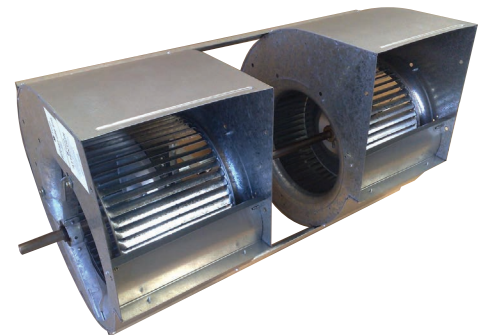
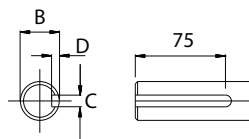
Part No. BPC457-483-16C  
BPC457-483-75C



Part No. BPC457-483-16A  
BPC457-483-75A

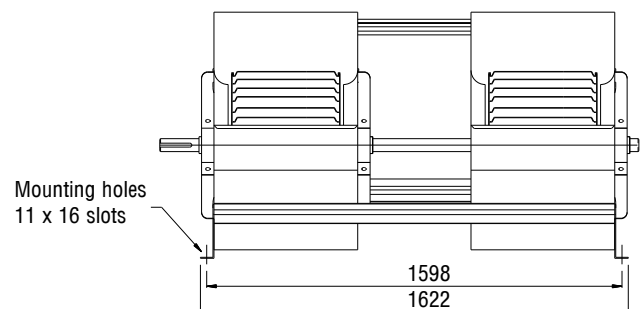
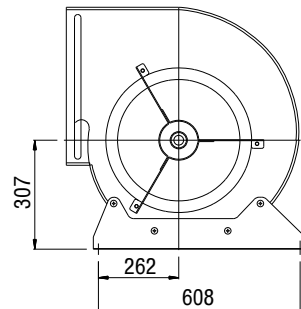
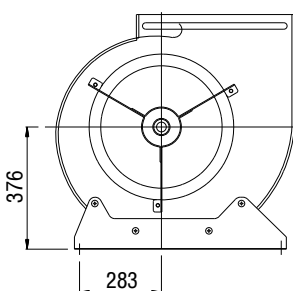
### SHAFT DETAIL

Part No.	B	C	D
[in] BPC457-483-16C & - 16A	Ø25.40	6.35	3.75
	Ø25.35	6.33	3.60
[mm] BPC457-483-75C & - 75A	Ø25.00	8.00	4.20
	Ø24.96	7.96	4.00



NOTE:  
1. Imperial Shaft - 1.0" uses 1/4" x 1/4" Keyway  
2. Metric Shaft - Ø25.0mm uses 8mm x 7mm Keyway

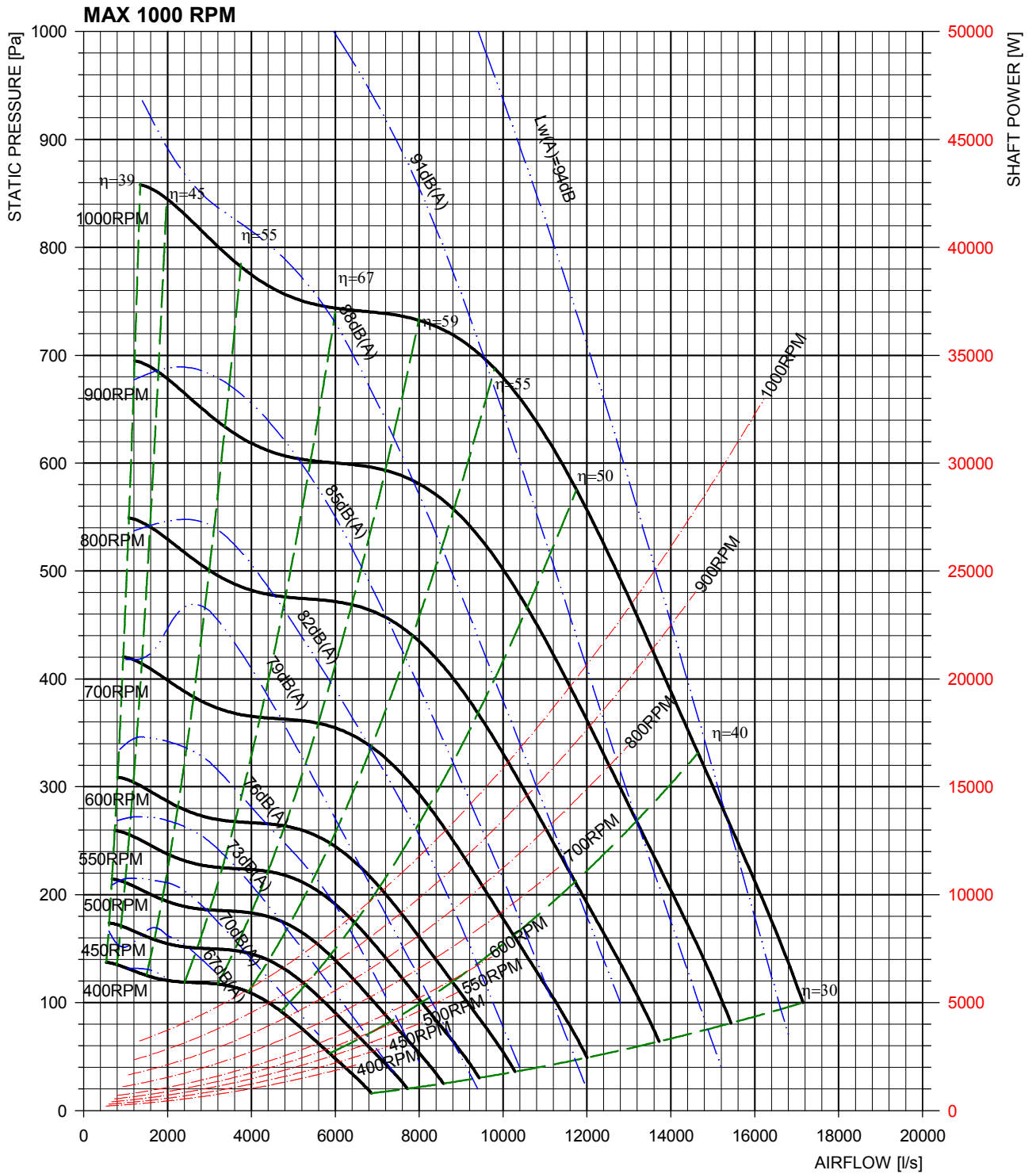
### DISCHARGE POSITIONS



# TWIN BELT DRIVE

## 18"x19" STANDARD DUTY

### DUCTED DISCHARGE





**Regal Air Systems**  
27 Wedgewood Road,  
Hallam, VIC 3803  
AUSTRALIA  
Tel: +61 03 8786 1700  
Fax: +61 03 8786 1750

**Fasco Motors (Thailand) Limited**  
29/7-8 Bangkruay-Sainoi Road,  
Bangkrang, Muang Nonthaburi District  
Nonthaburi 11000 THAILAND  
Tel: +61 662 447 3300  
Fax: +61 662 447 3500

**REGAL BELOIT (dba Torin dba CMG)**  
No. 6536A Jalan Bukit Kemuning  
Batu 6, Seksyen 34  
40470 Shah Alam, Selangor.  
Tel: +60 3 51246157  
Fax: +60 3 51211467

**CMG Electric Motors (NZ) Ltd.**  
18 Jomac Place  
Avondale Auckland  
NEW ZEALAND  
Tel: +64 9820 3550  
Fax: +64 9820 8504

**CMG Electric Motors (Asia Pacific) Pte Ltd**  
12 Tuas Loop  
SINGAPORE 637346  
Tel: +65 6863 3473  
Fax: +65 6863 3476

A Regal Brand

**REGAL**

[www.regalbeloit.com](http://www.regalbeloit.com)  
[www.fasco.com](http://www.fasco.com)  
[www.regalaustralia.com](http://www.regalaustralia.com)

FASCO | Belt Drive Blower -  
Twin Belt Drive 0813 (1.1.0)

All FASCO products are regularly redesigned and improved and FASCO reserves the right to change the design, technical specification and dimensions without prior notice.